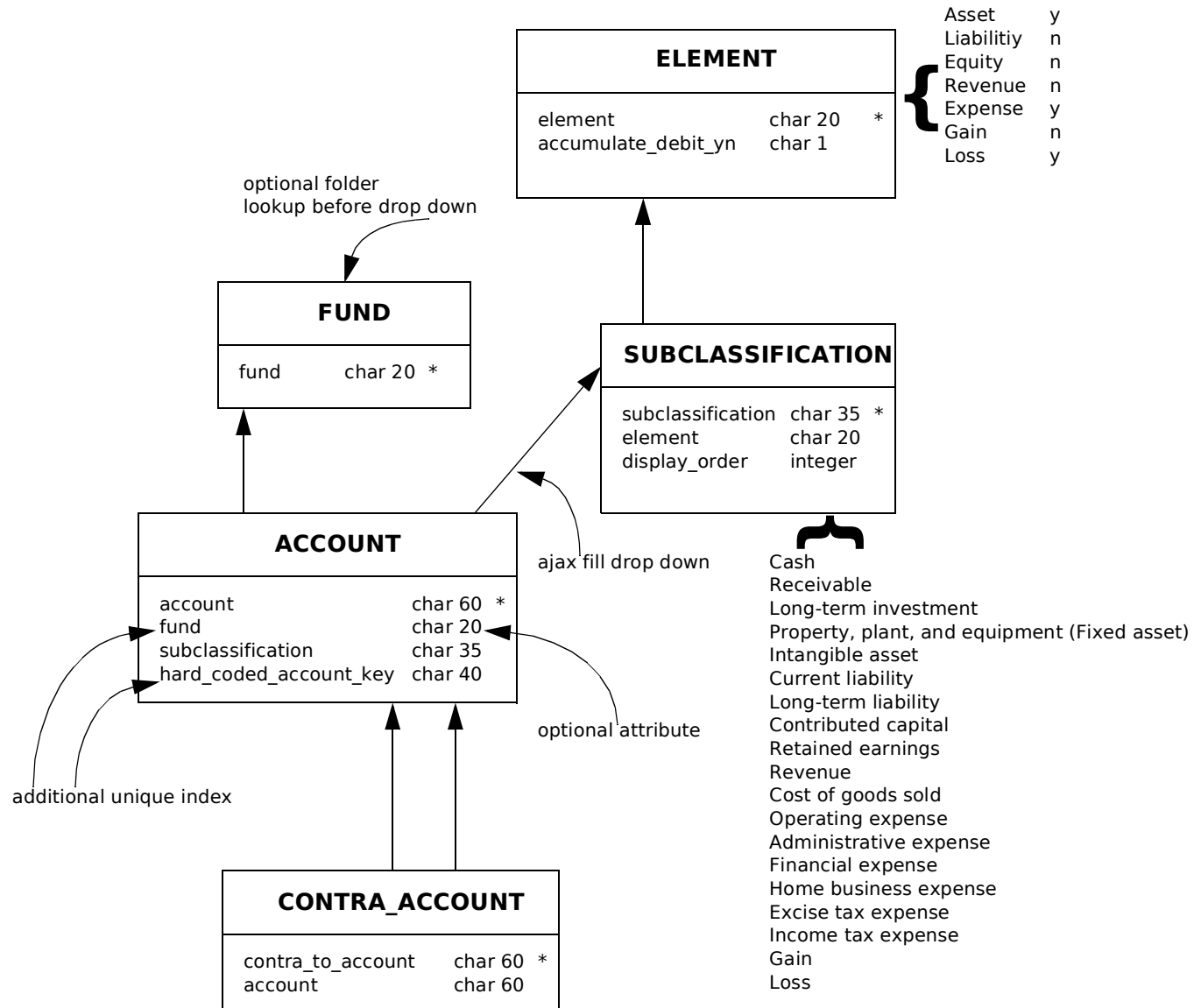
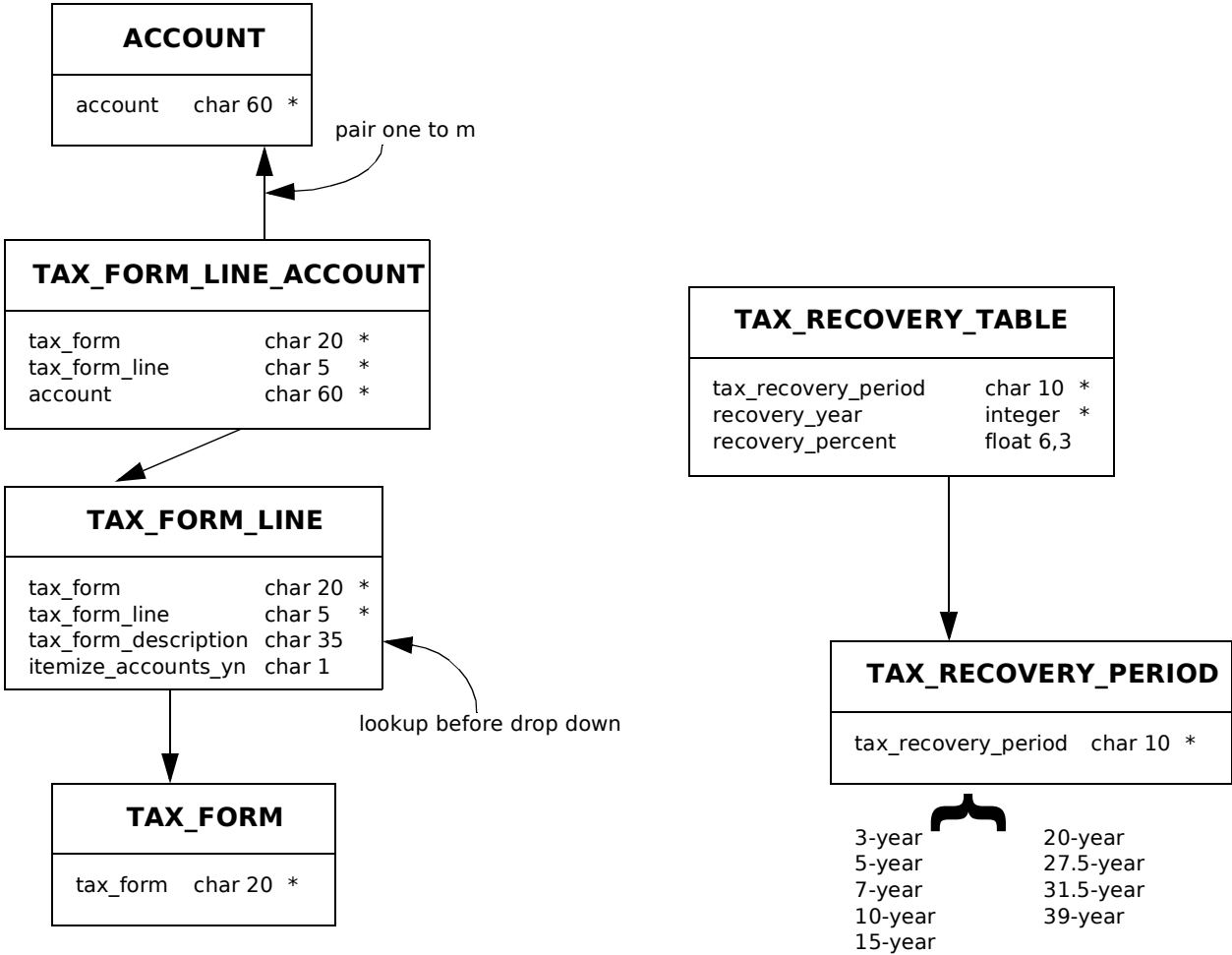
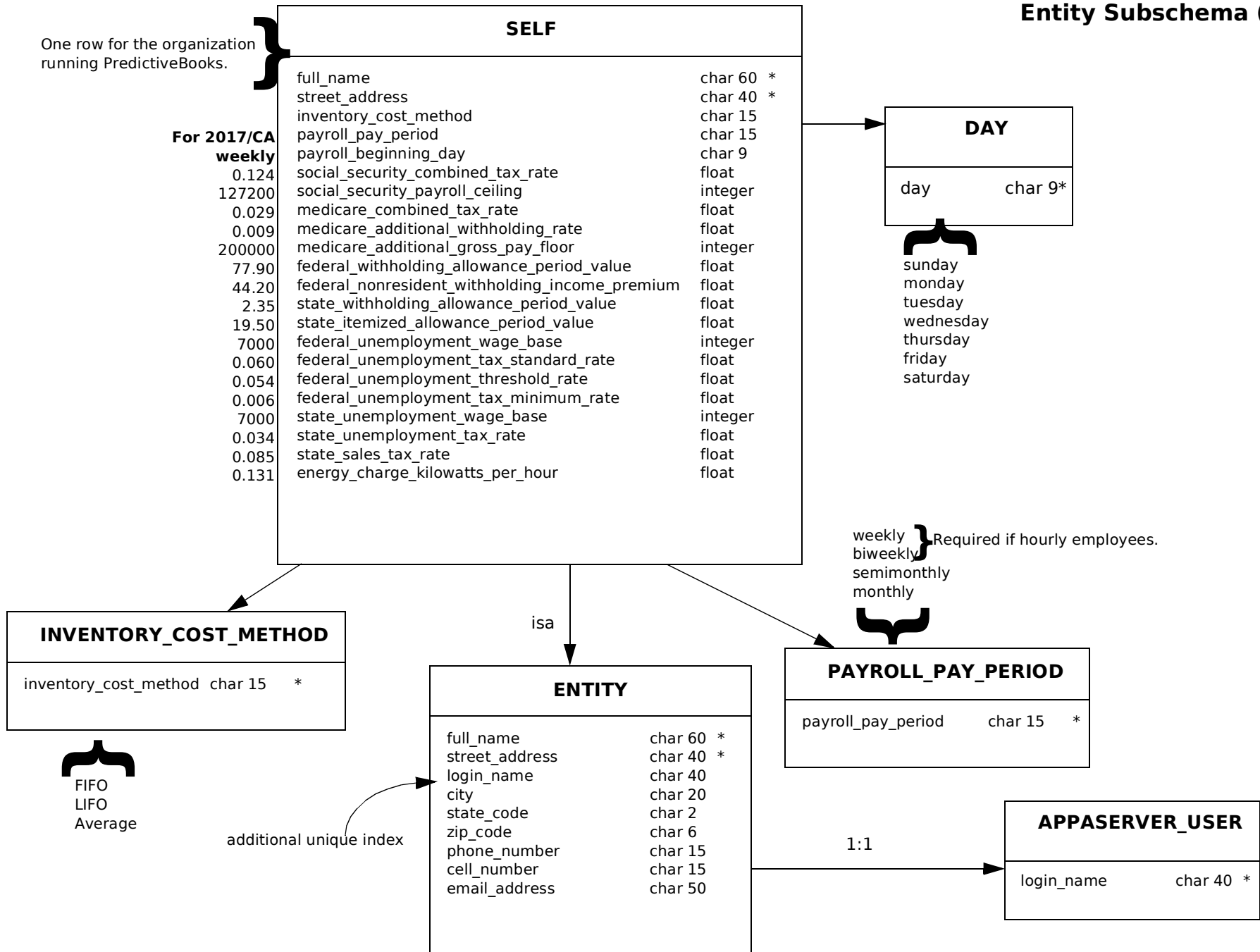


Account Subschema

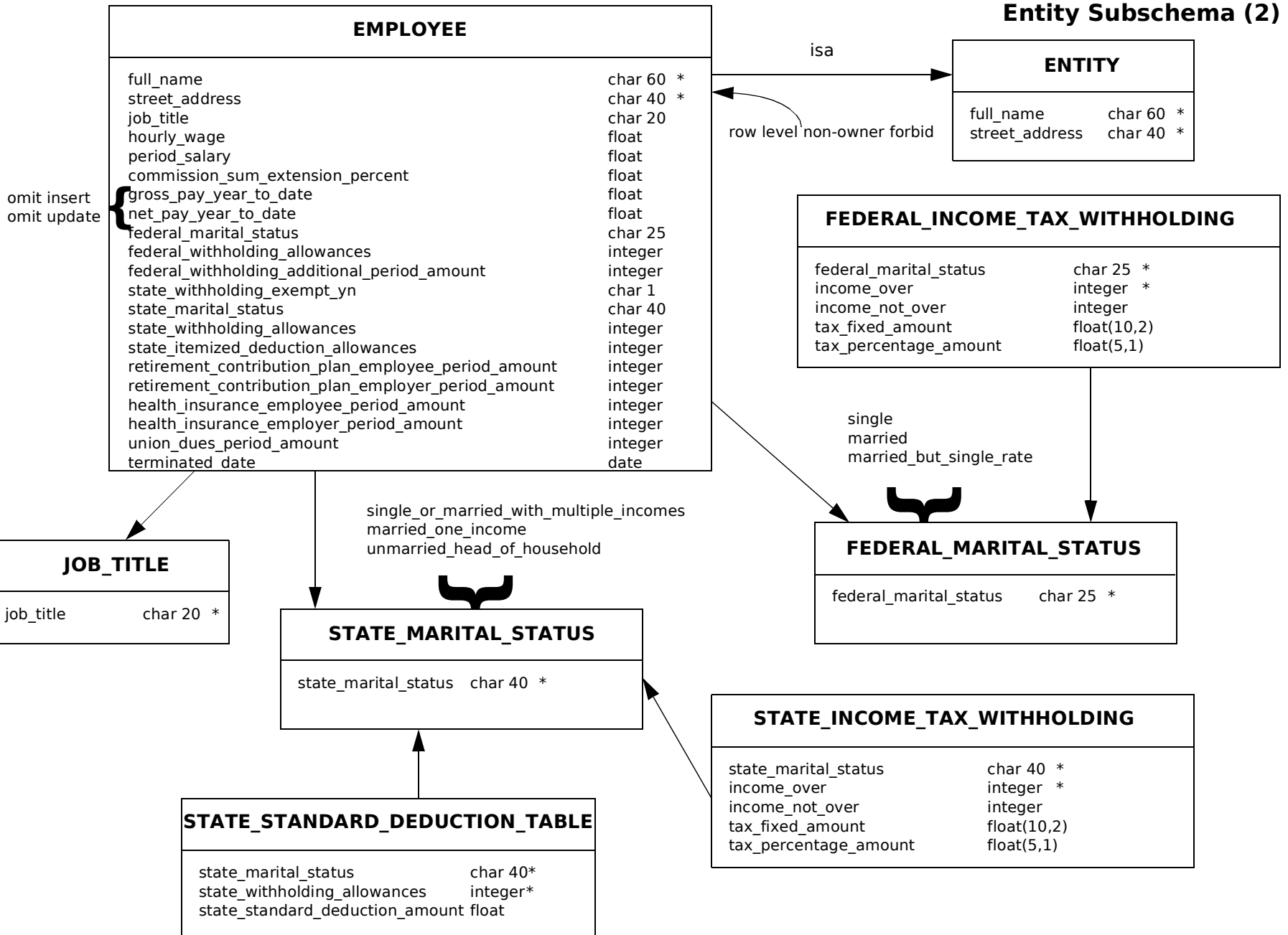




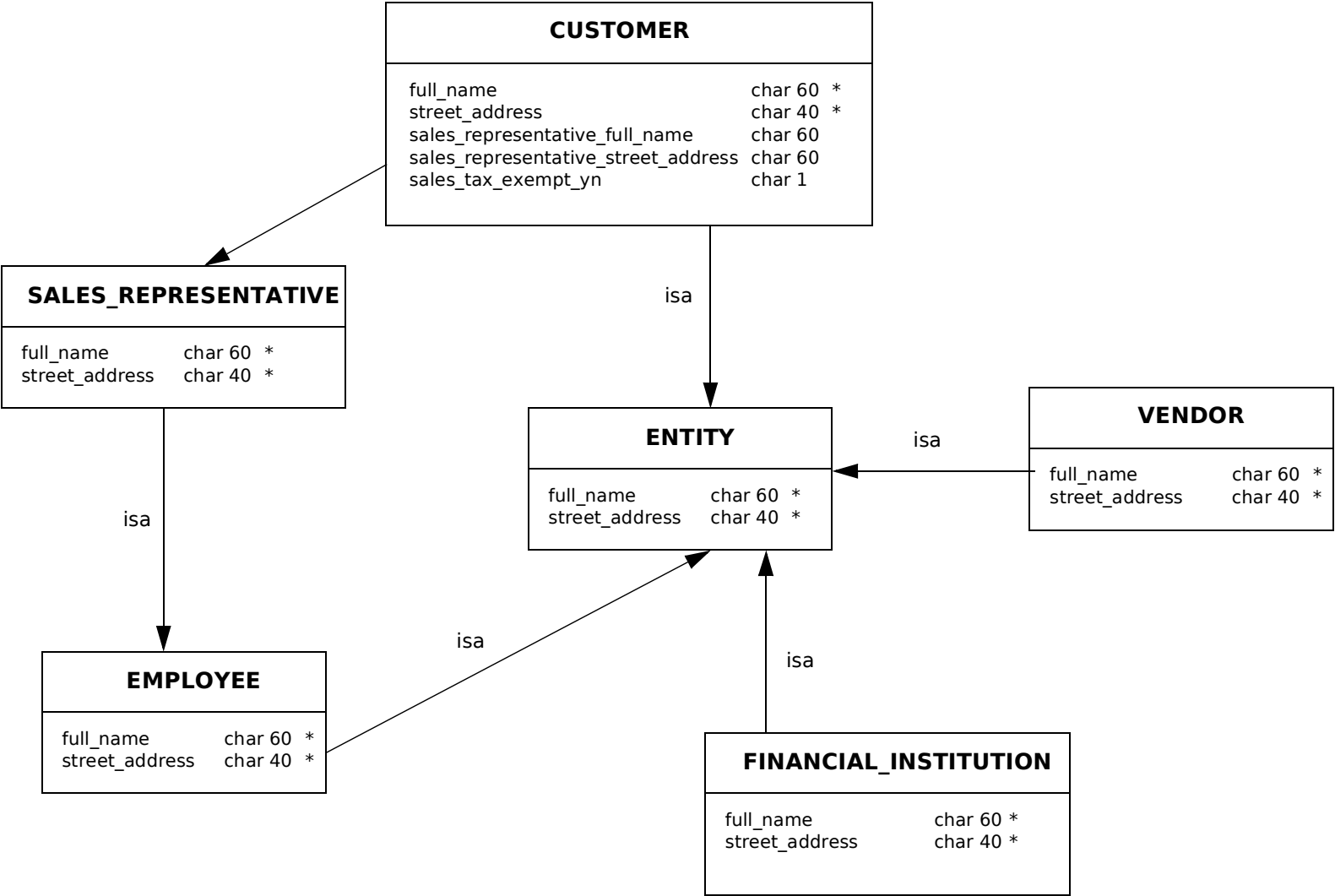
Entity Subschema (1)



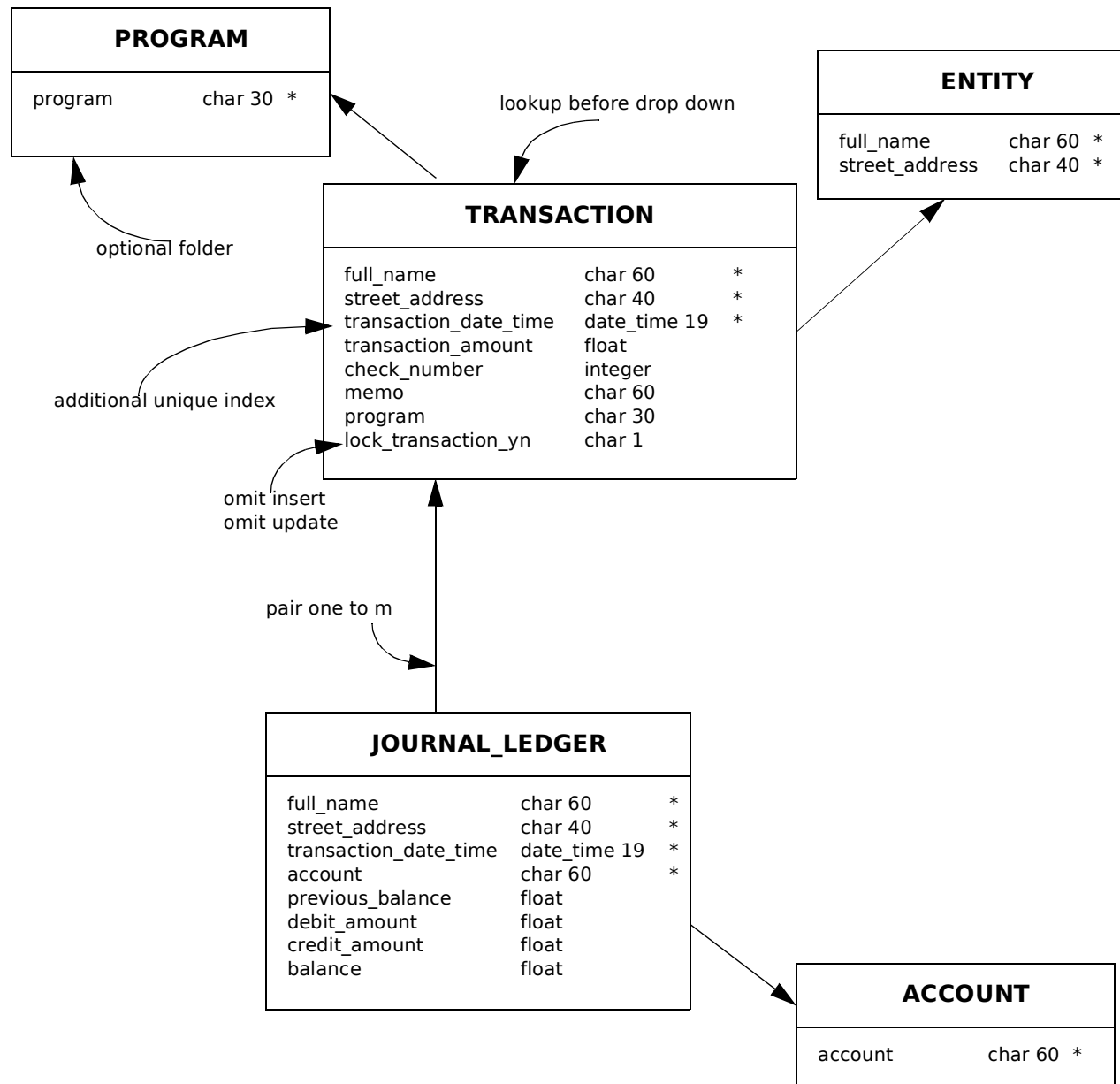
Entity Subschema (2)



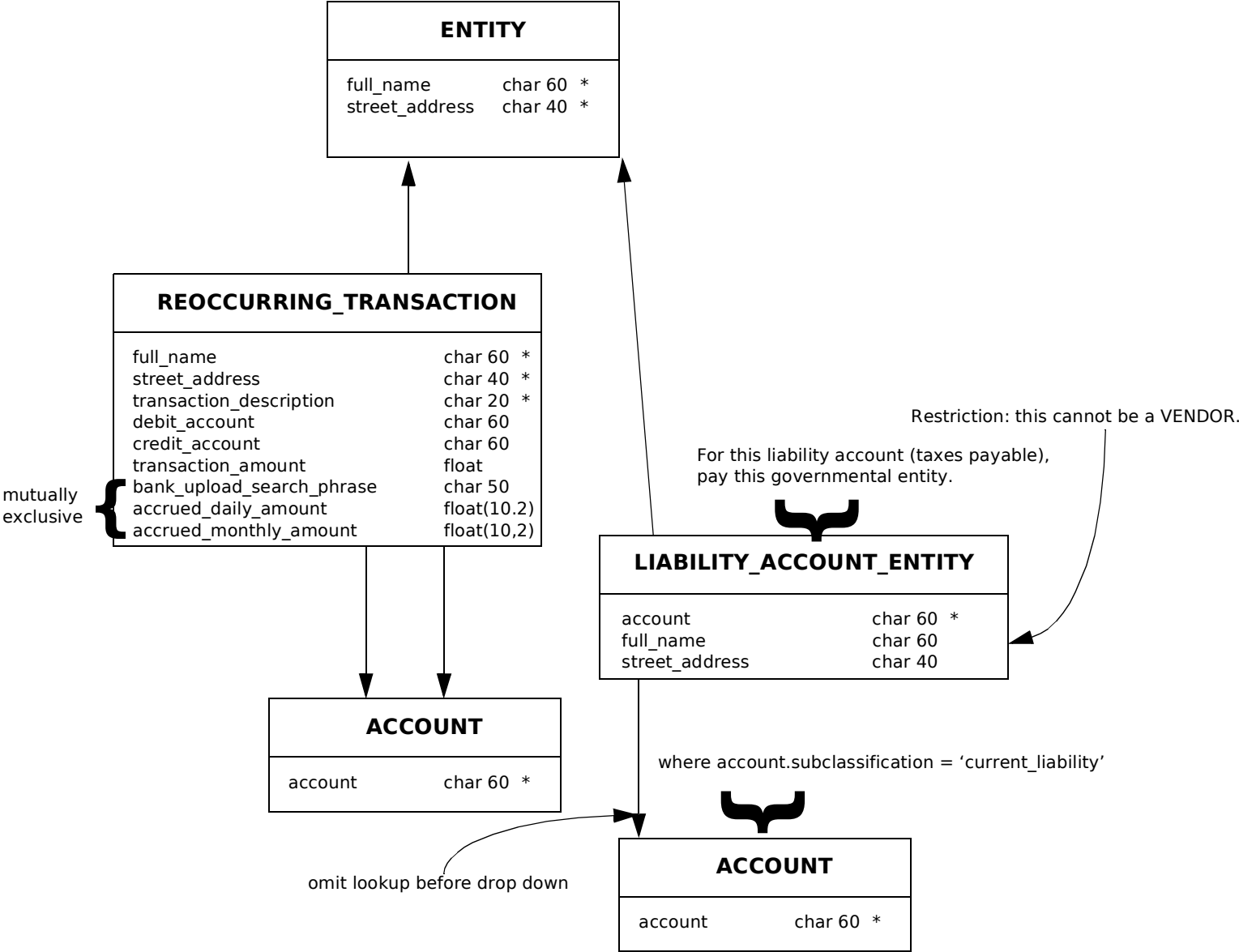
Entity Subschema (3)



Transaction Subschema (1)



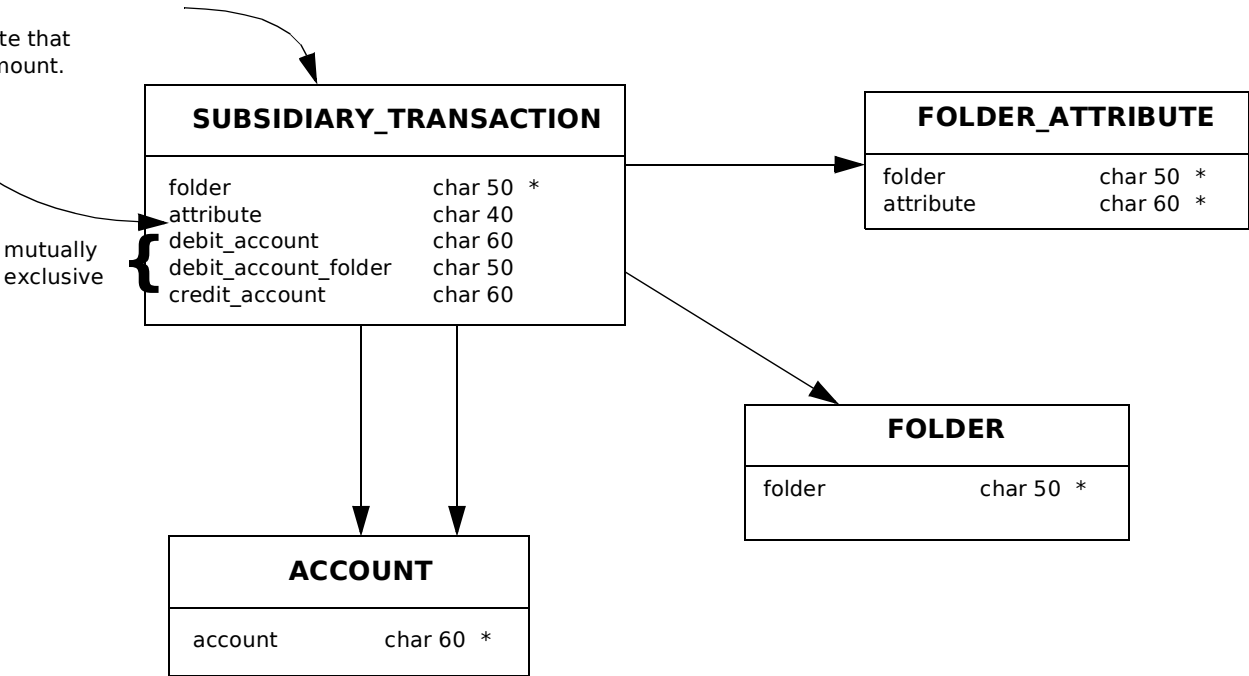
Transaction Subschema (2)

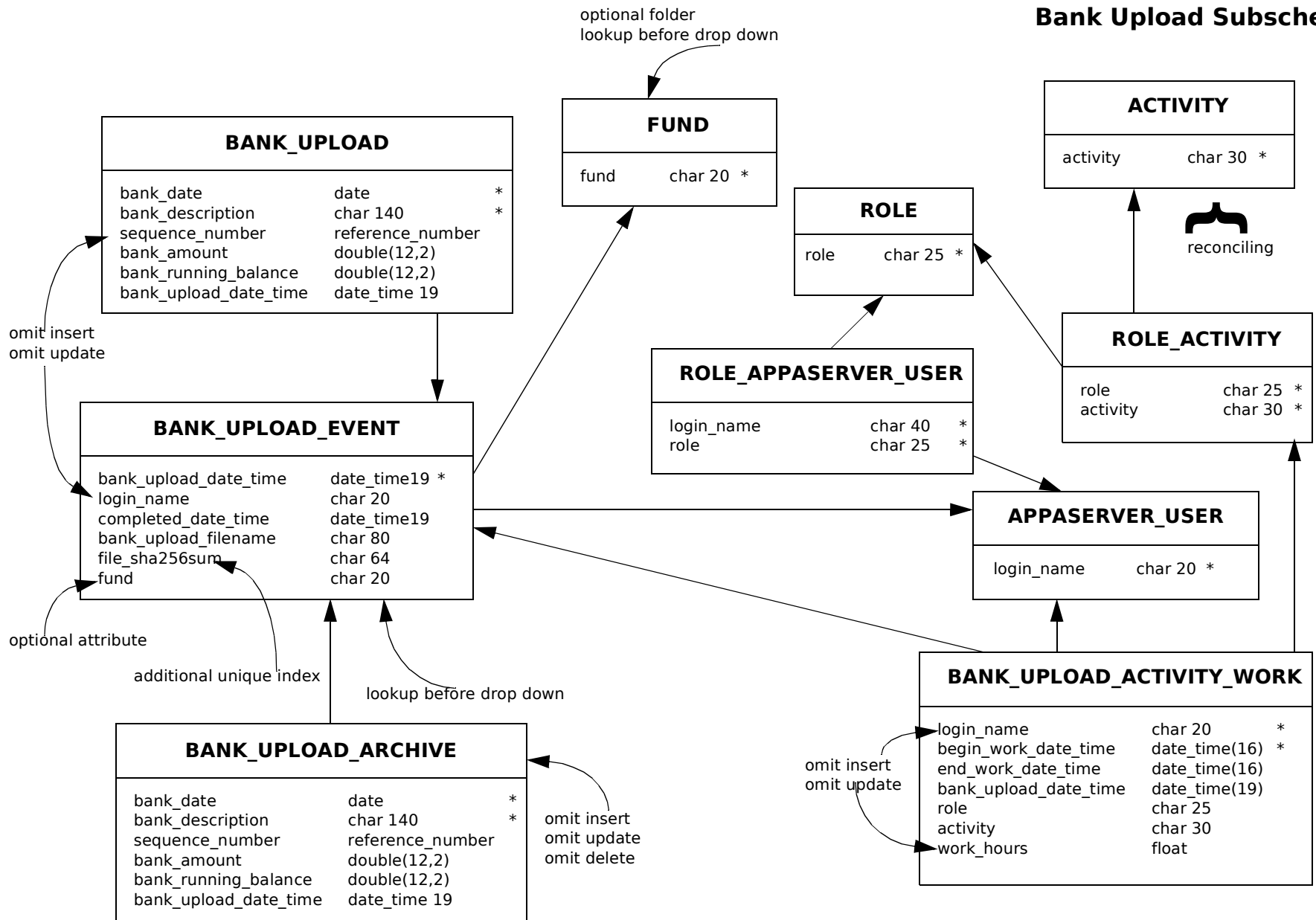


Transaction Subschema (3)

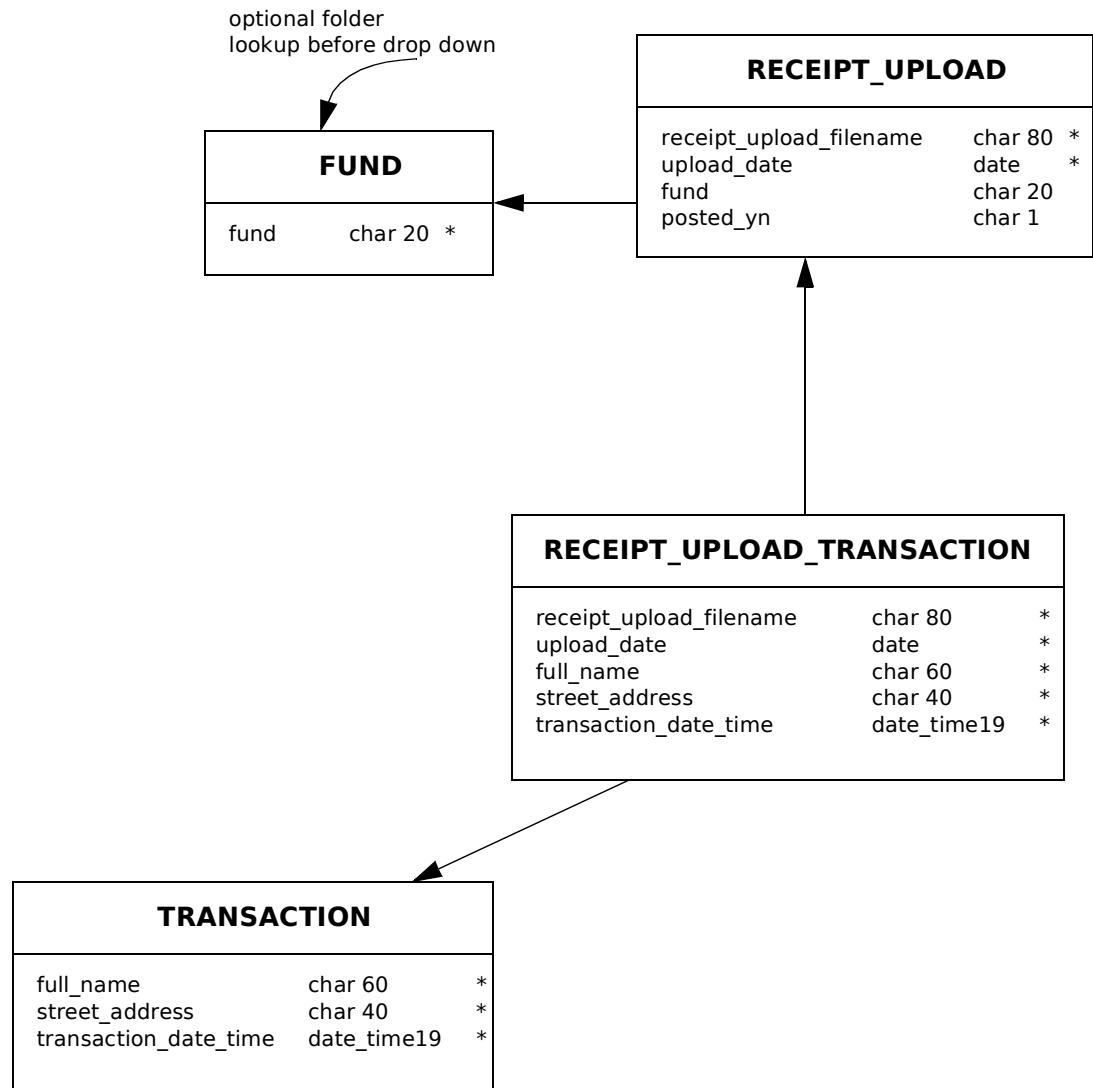
Some PredictiveBooks folders are subsidiary transactions. Set the transactions' debit and credit accounts here. See PRIOR_FIXED_ASSET and CUSTOMER_PAYMENT.

The datatype=float attribute that becomes TRANSACTION.amount.

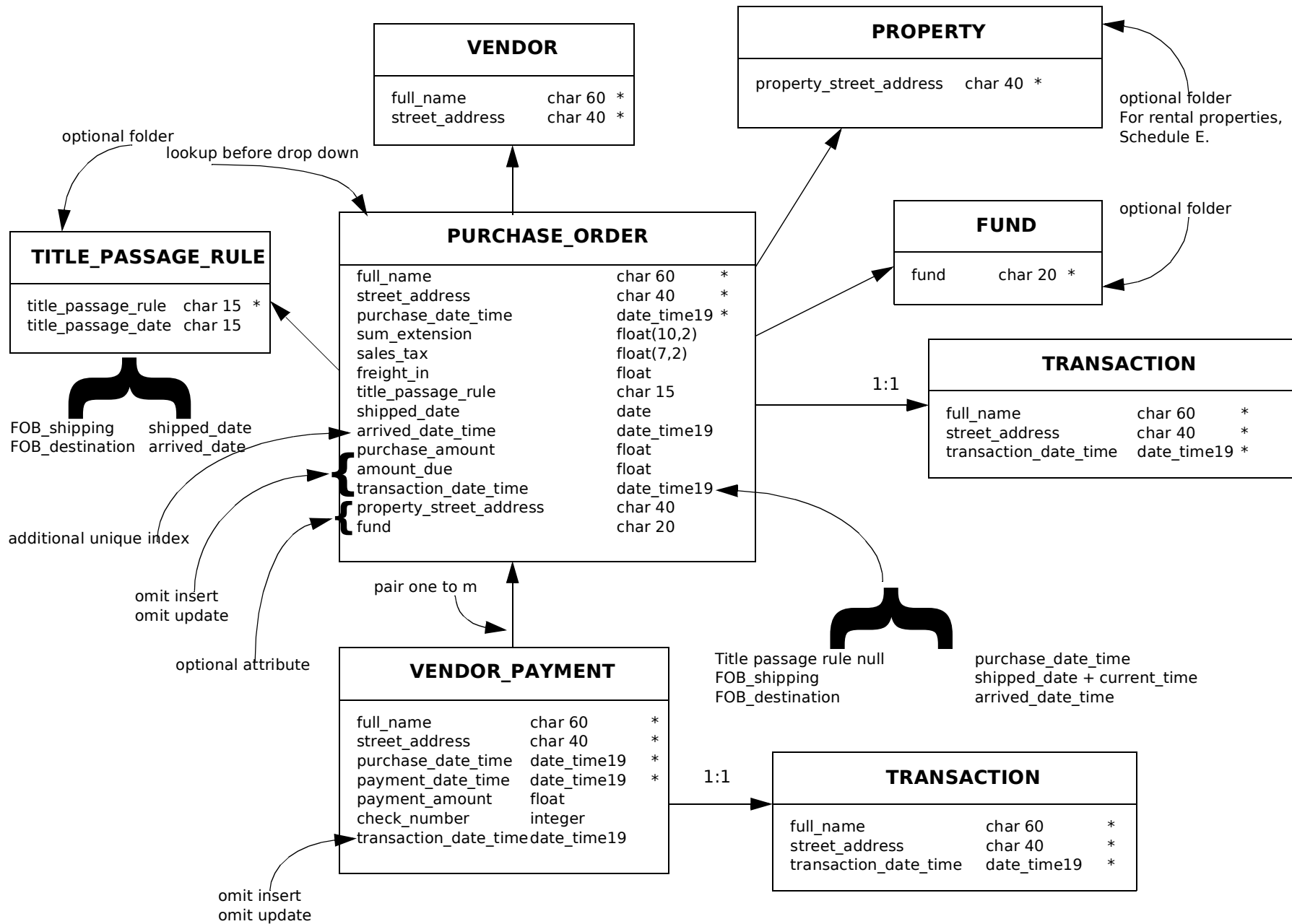




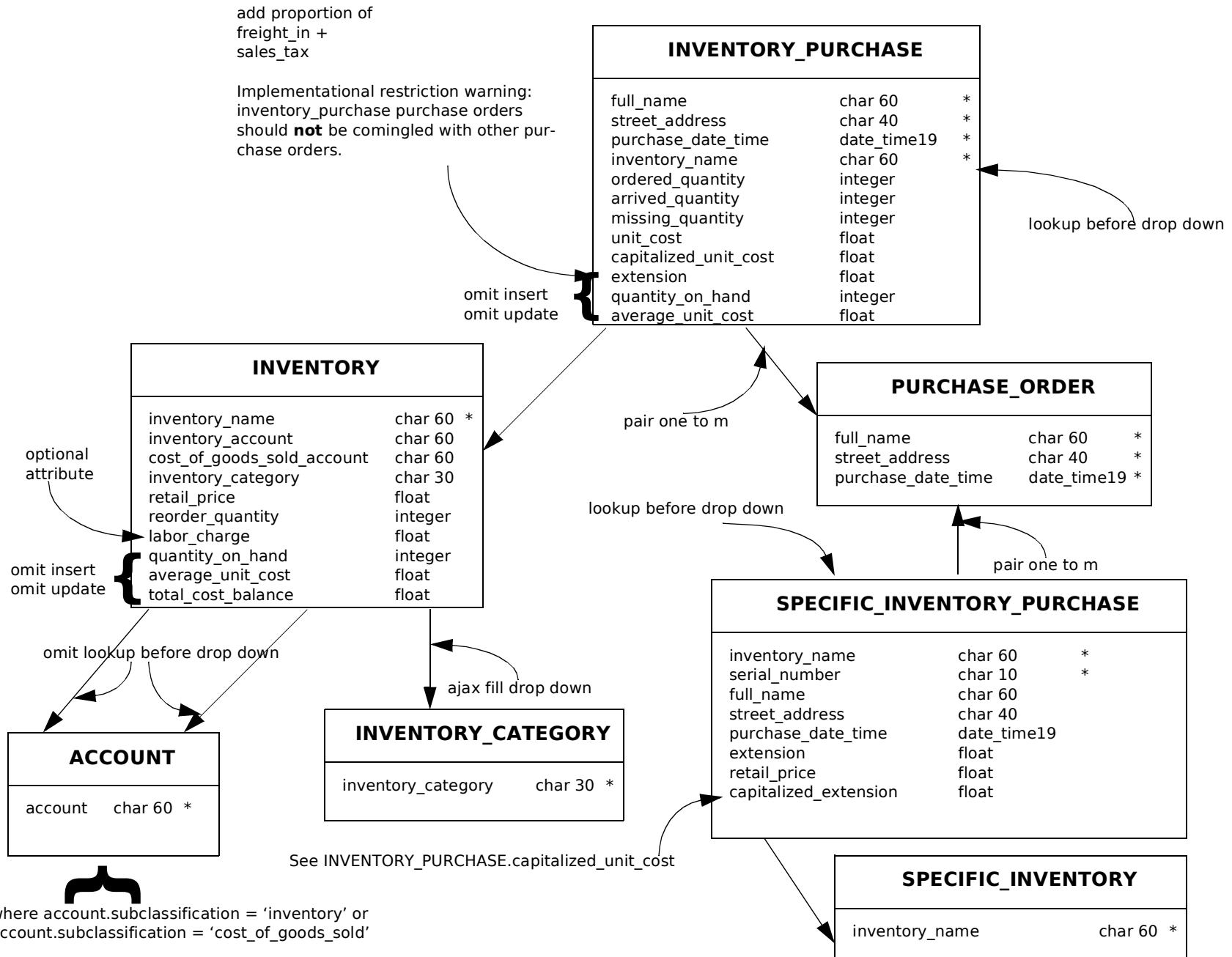
Receipt Upload Subschema



Purchase Subschema



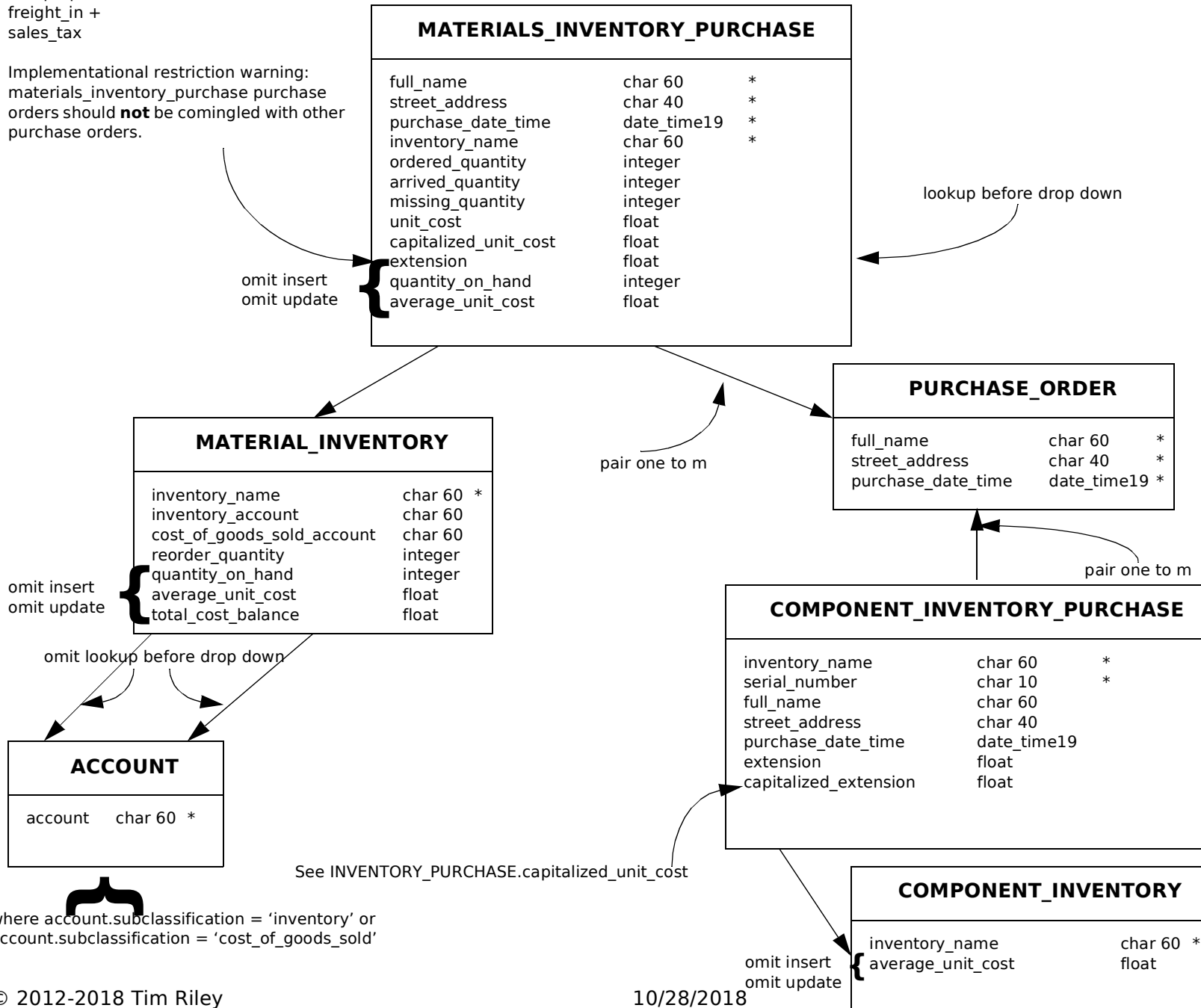
Inventory Purchase Subschema (1)



Inventory Purchase Subschema (2)

add proportion of
freight_in +
sales_tax

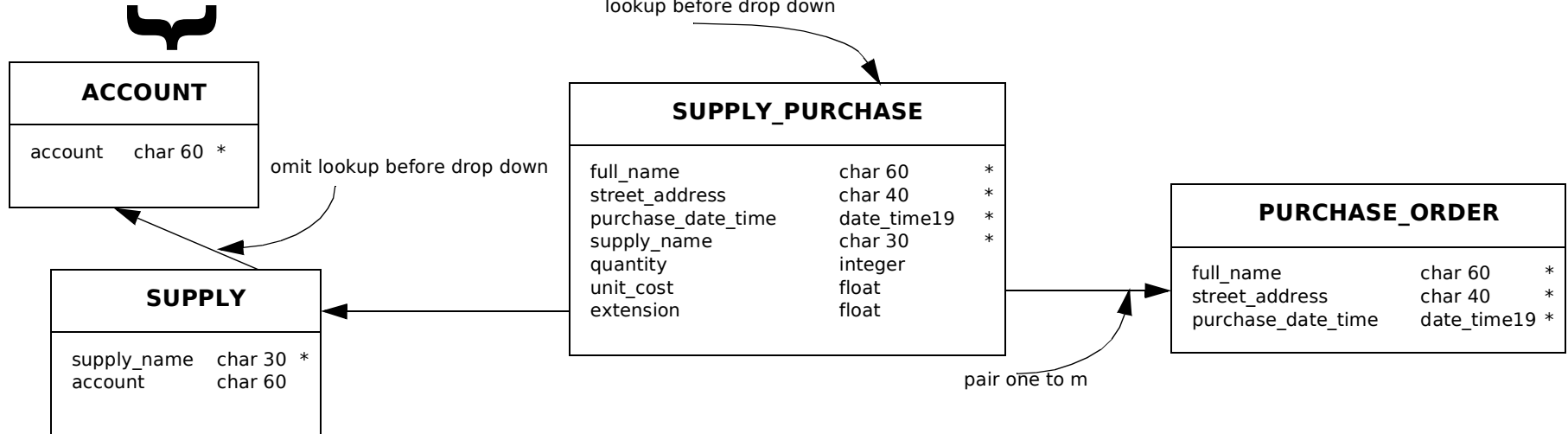
Implementational restriction warning:
materials_inventory_purchase purchase
orders should **not** be comingled with other
purchase orders.



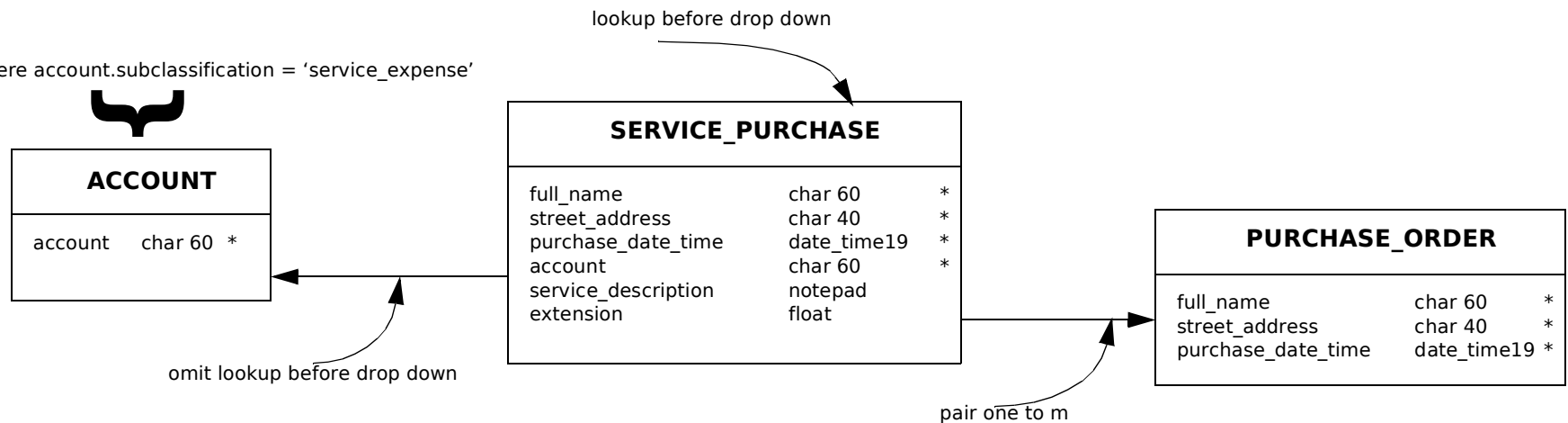
where account.subclassification = 'inventory' or
account.subclassification = 'cost_of_goods_sold'

Supply/Service Purchase Subschema

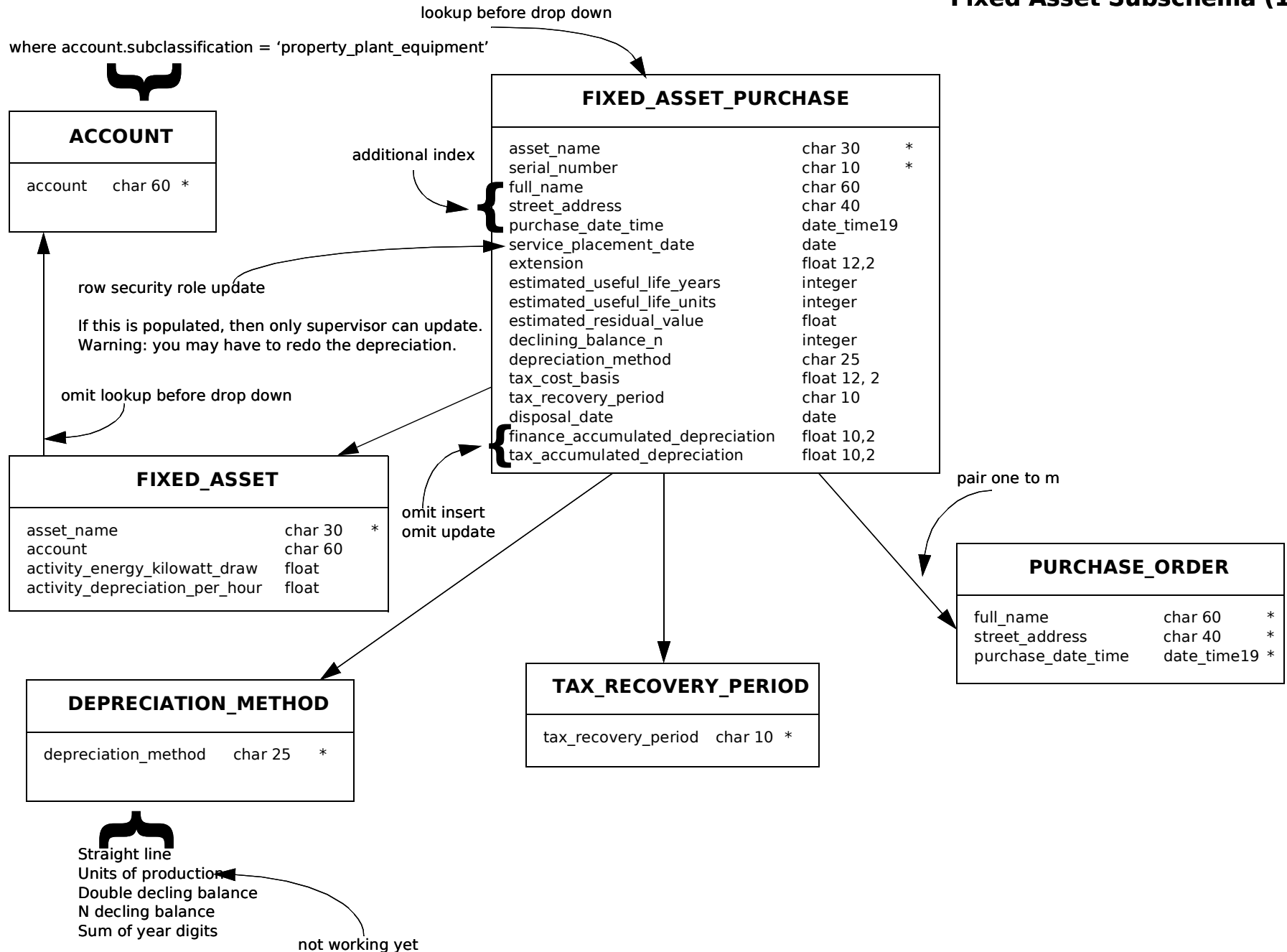
where account.subclassification = 'supply_expense'



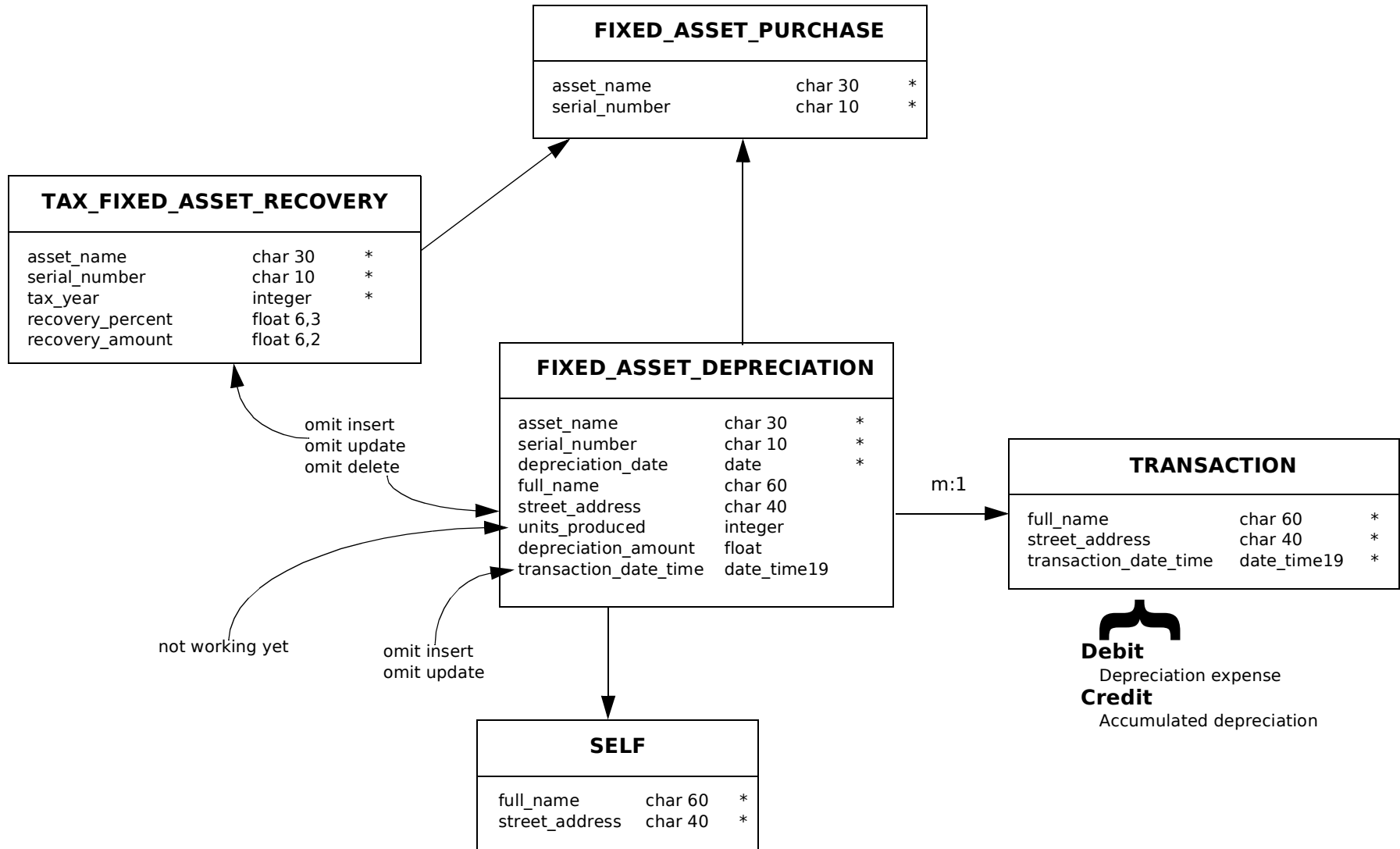
where account.subclassification = 'service_expense'



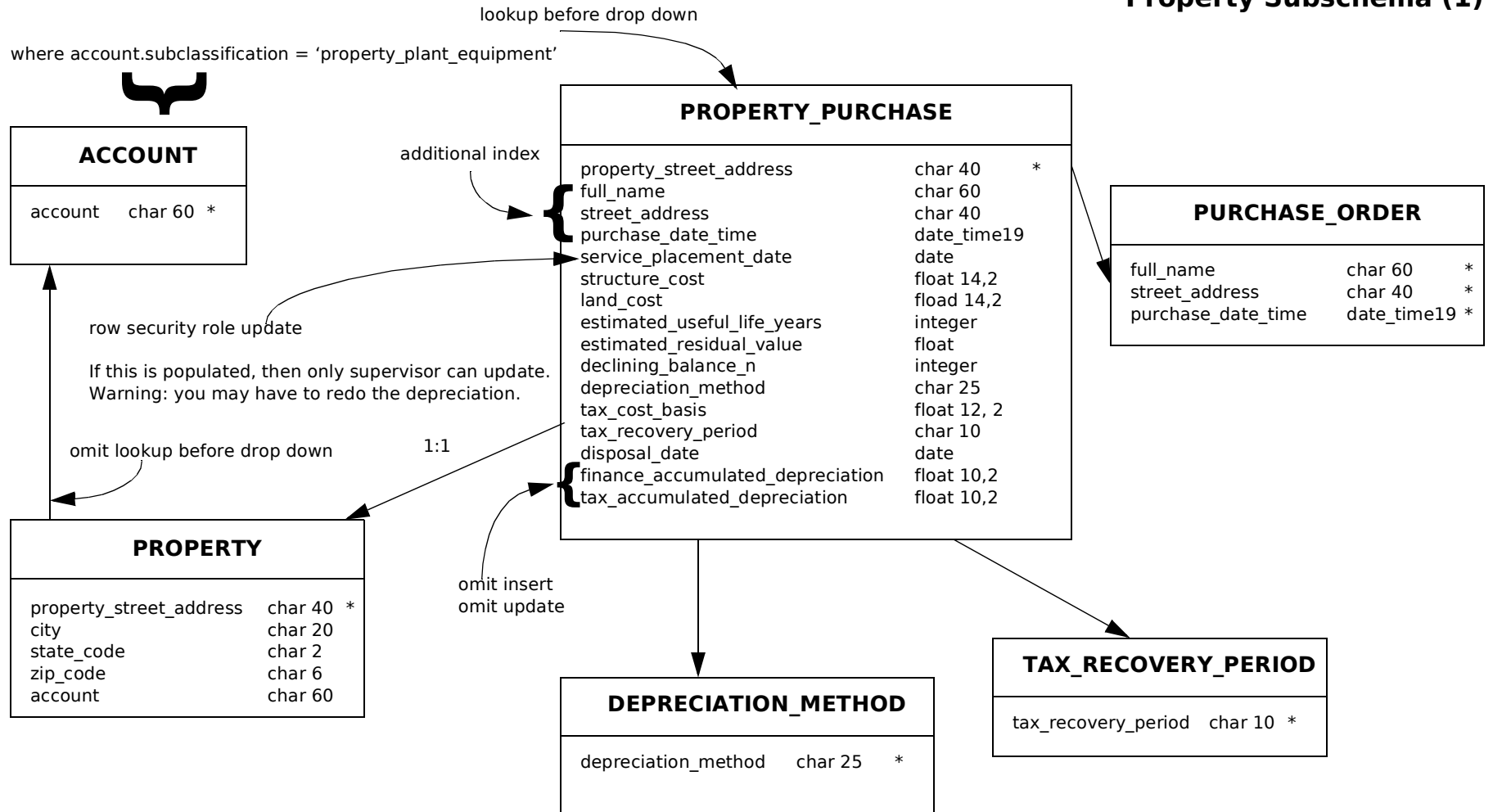
Fixed Asset Subschema (1)



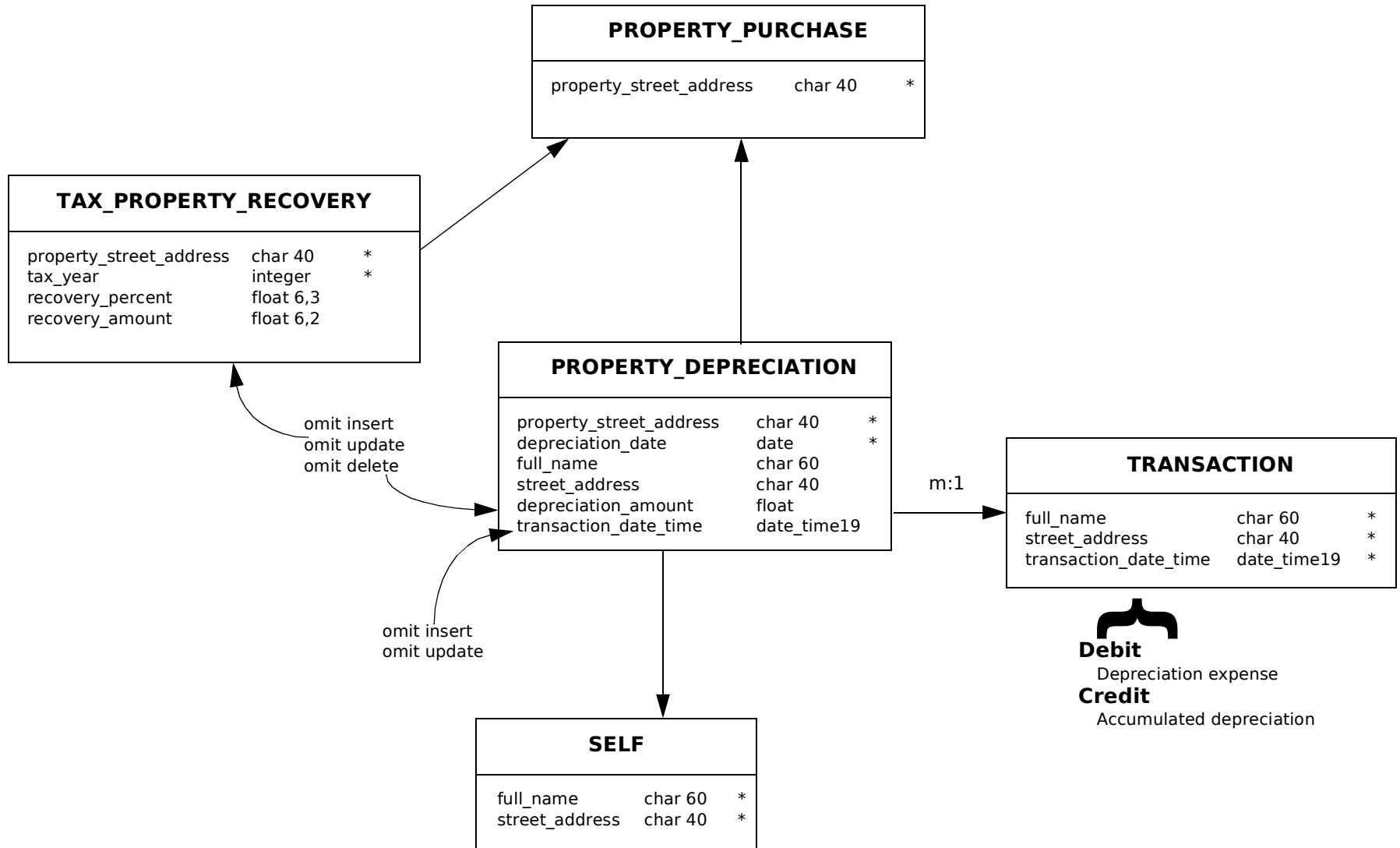
Fixed Asset Subschema (2)



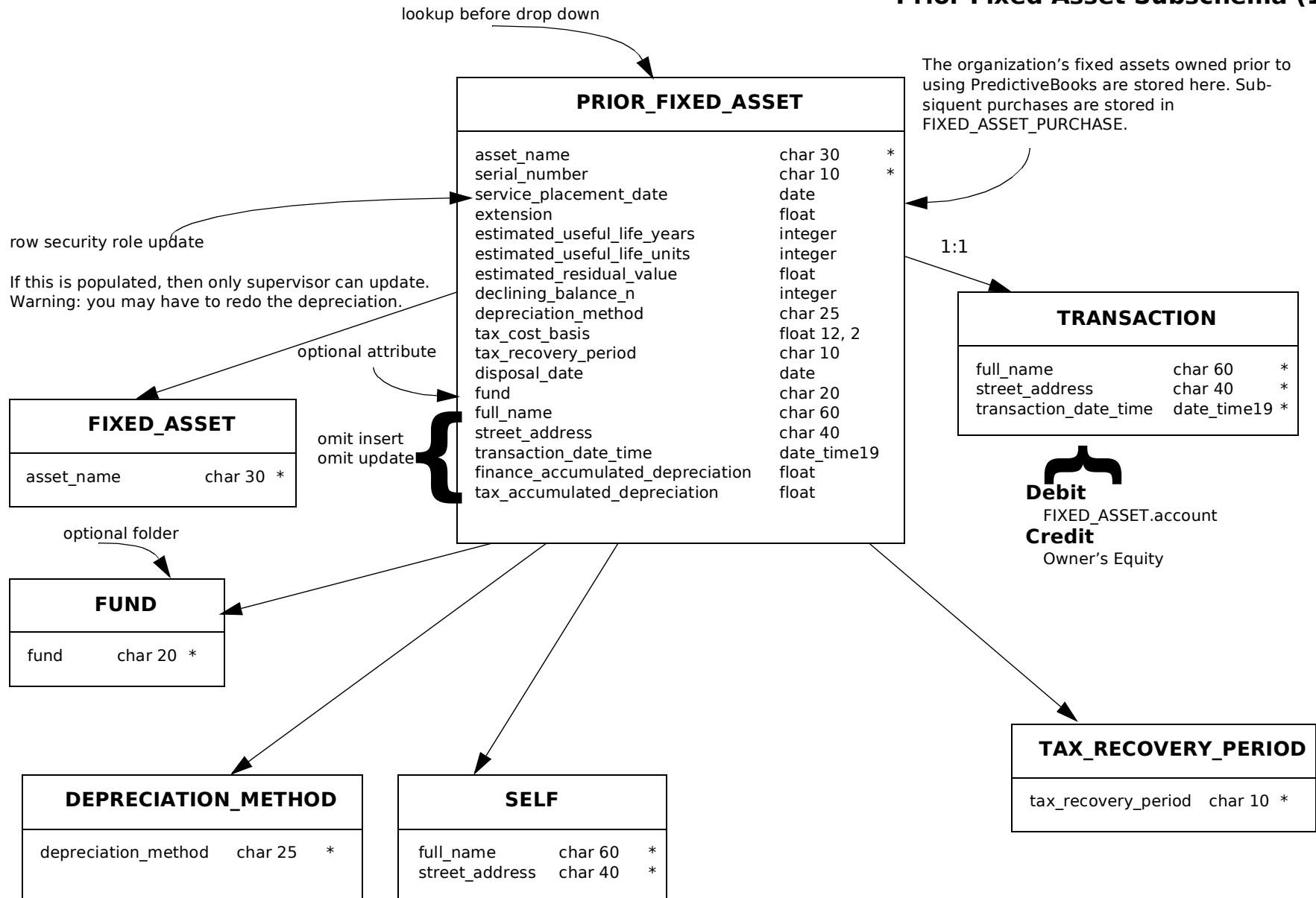
Property Subschema (1)



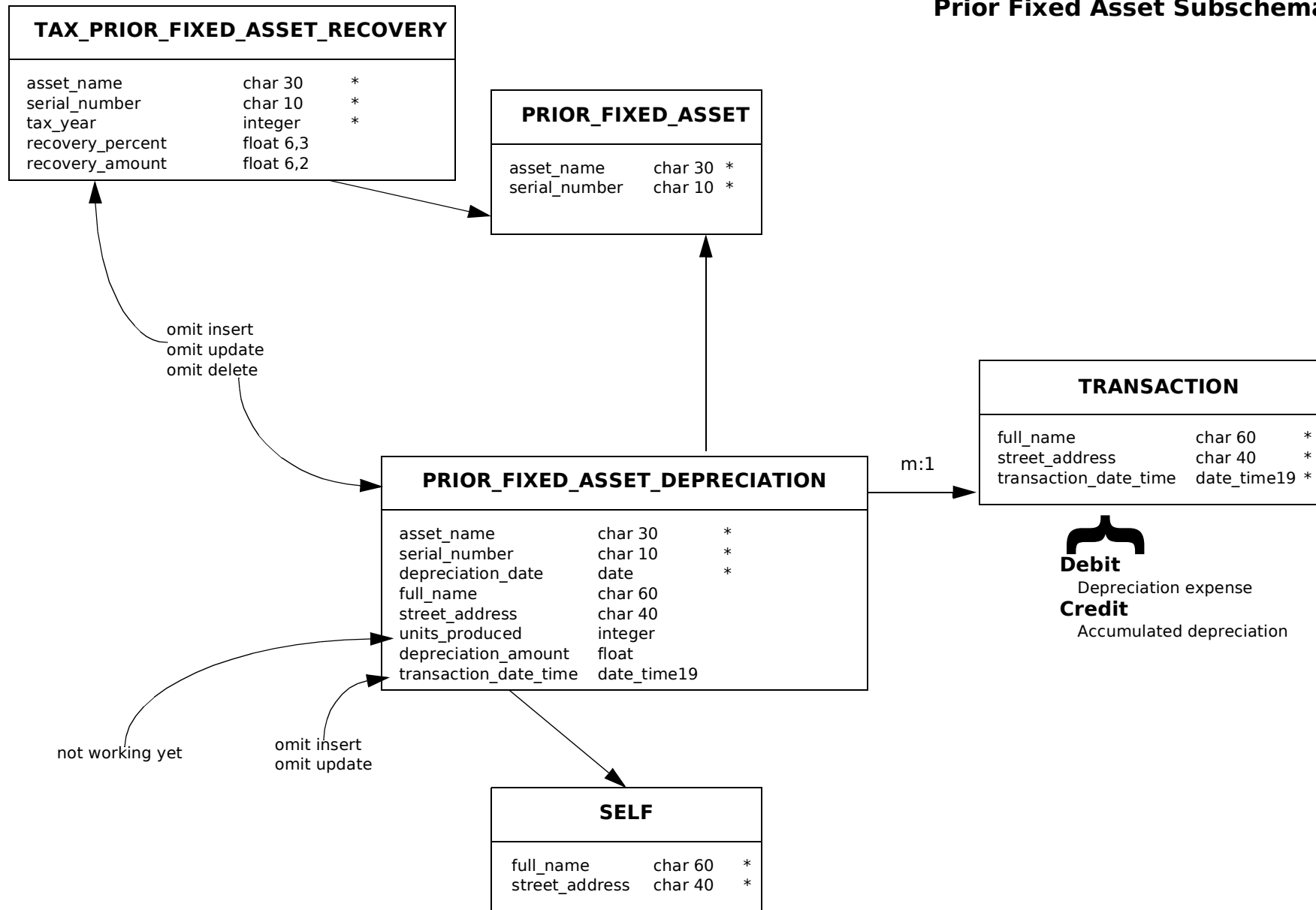
Property Subschema (2)



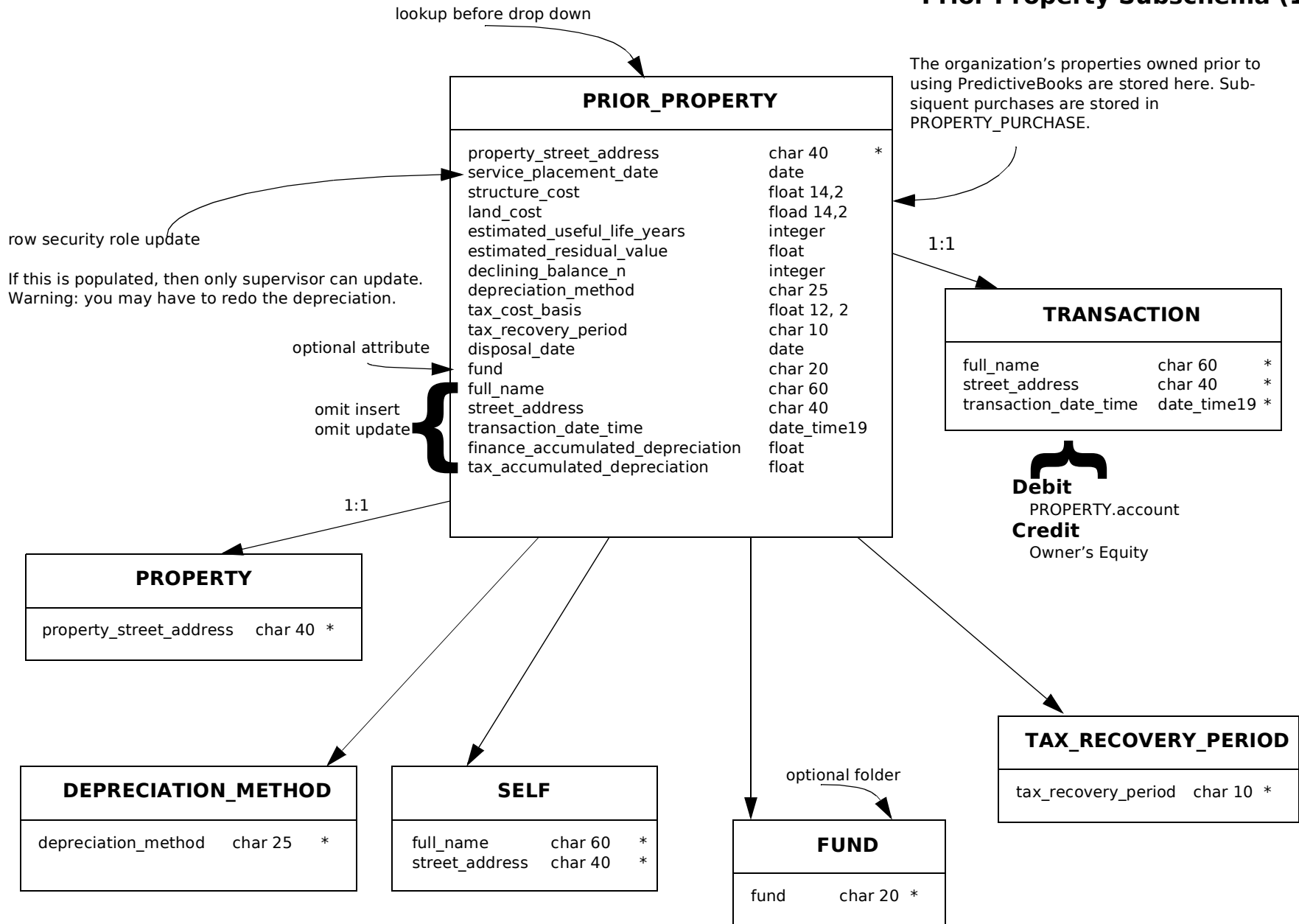
Prior Fixed Asset Subschema (1)



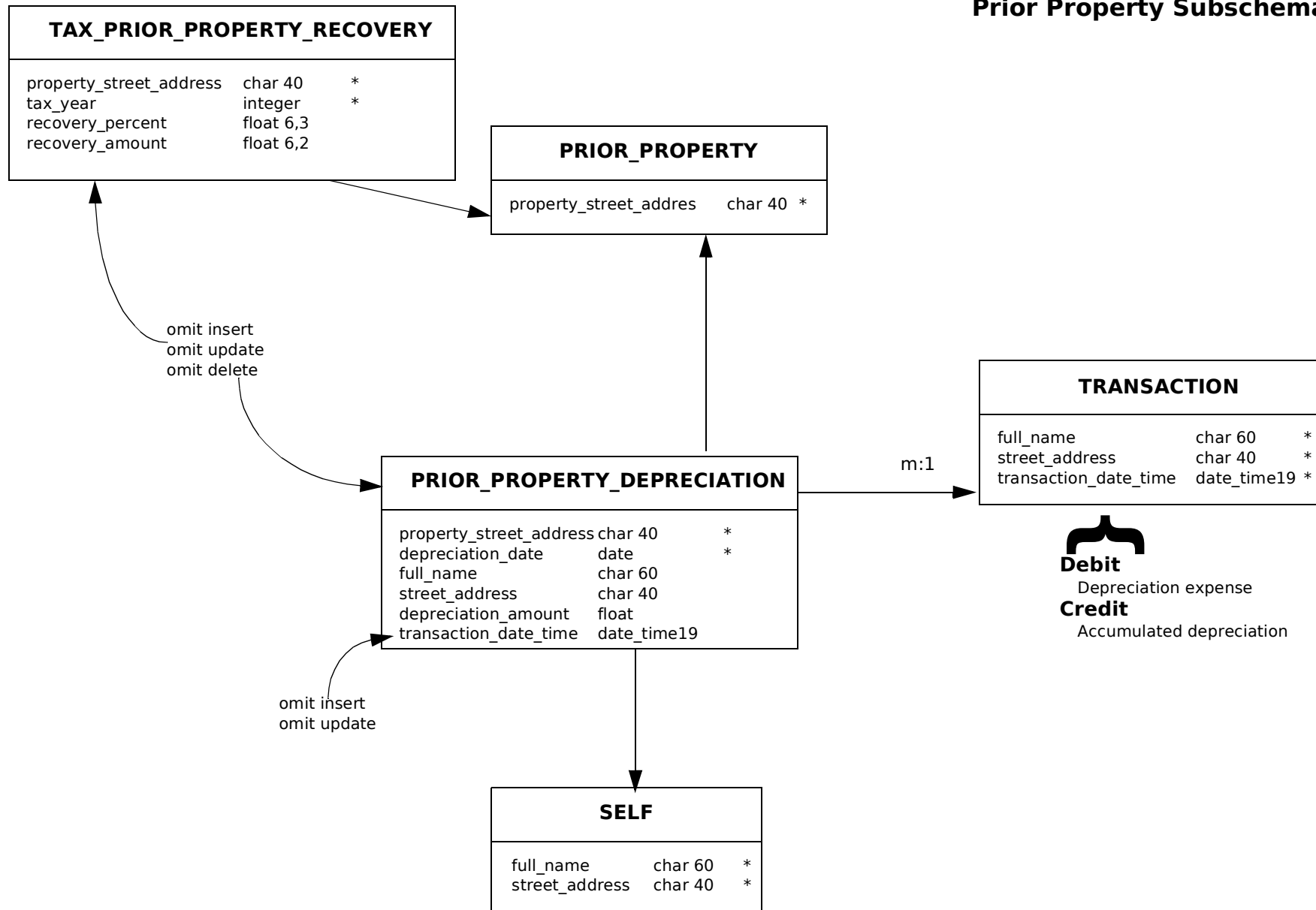
Prior Fixed Asset Subschema (2)



Prior Property Subschema (1)

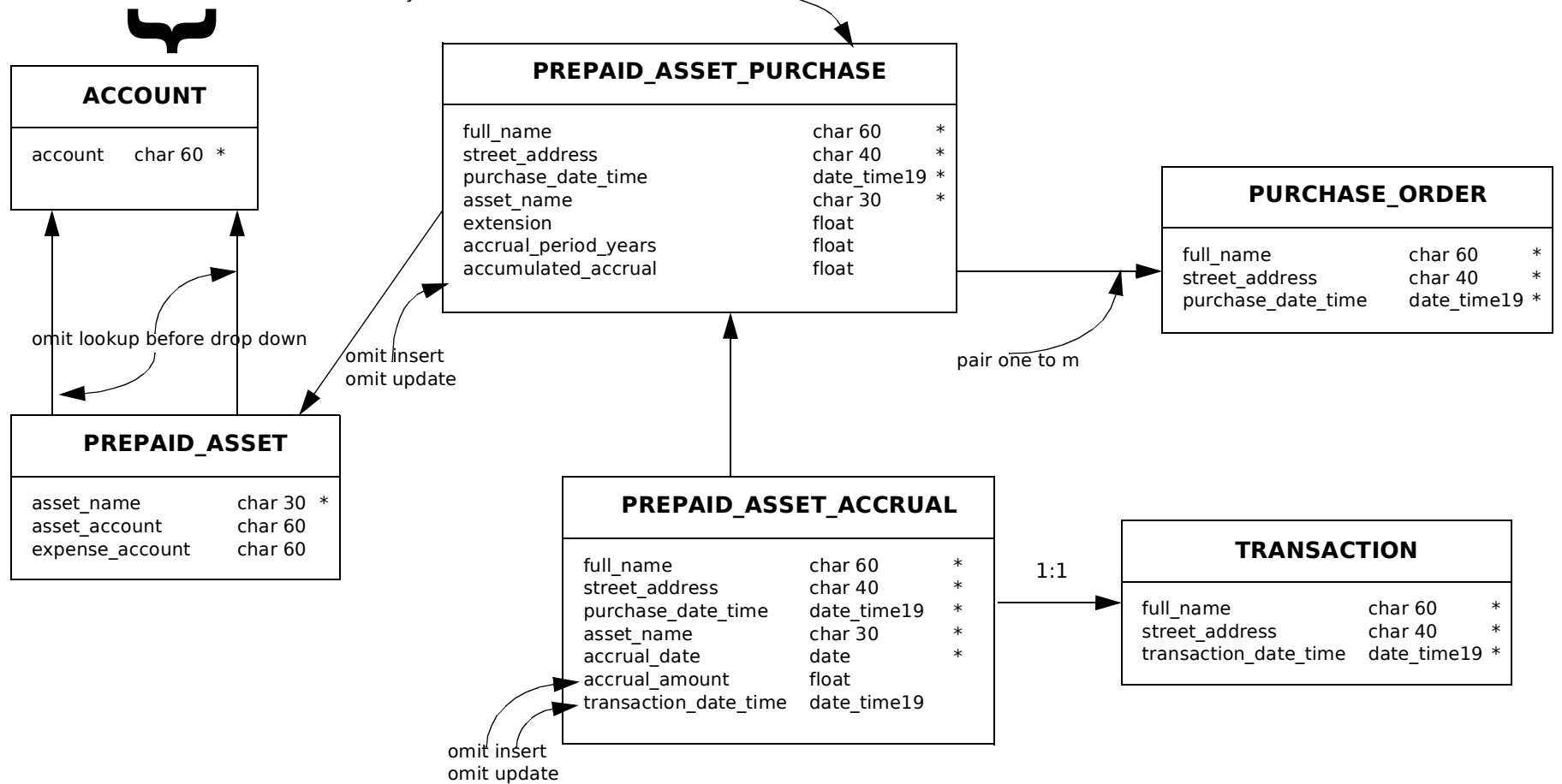


Prior Property Subschema (2)

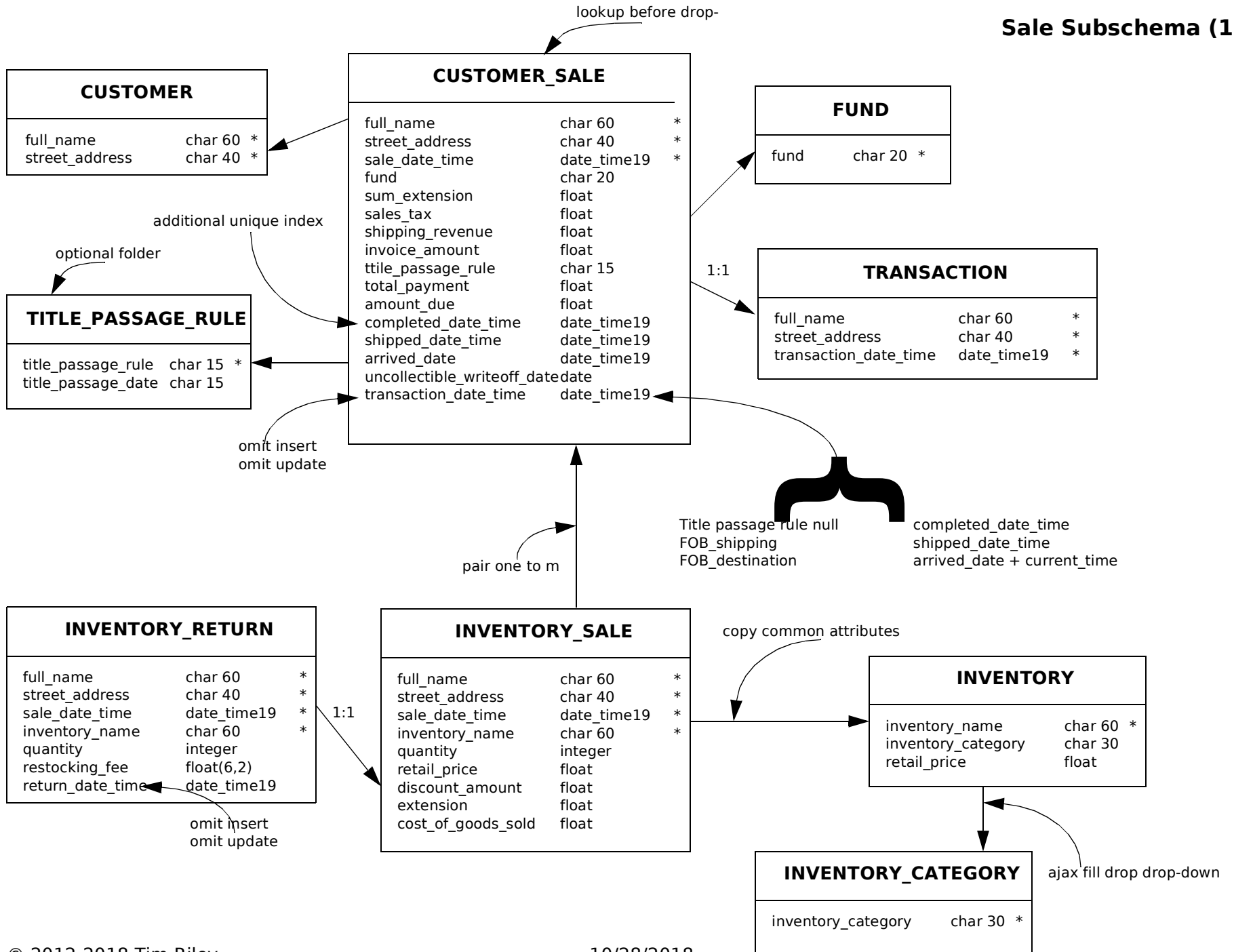


Prepaid Asset Subschema

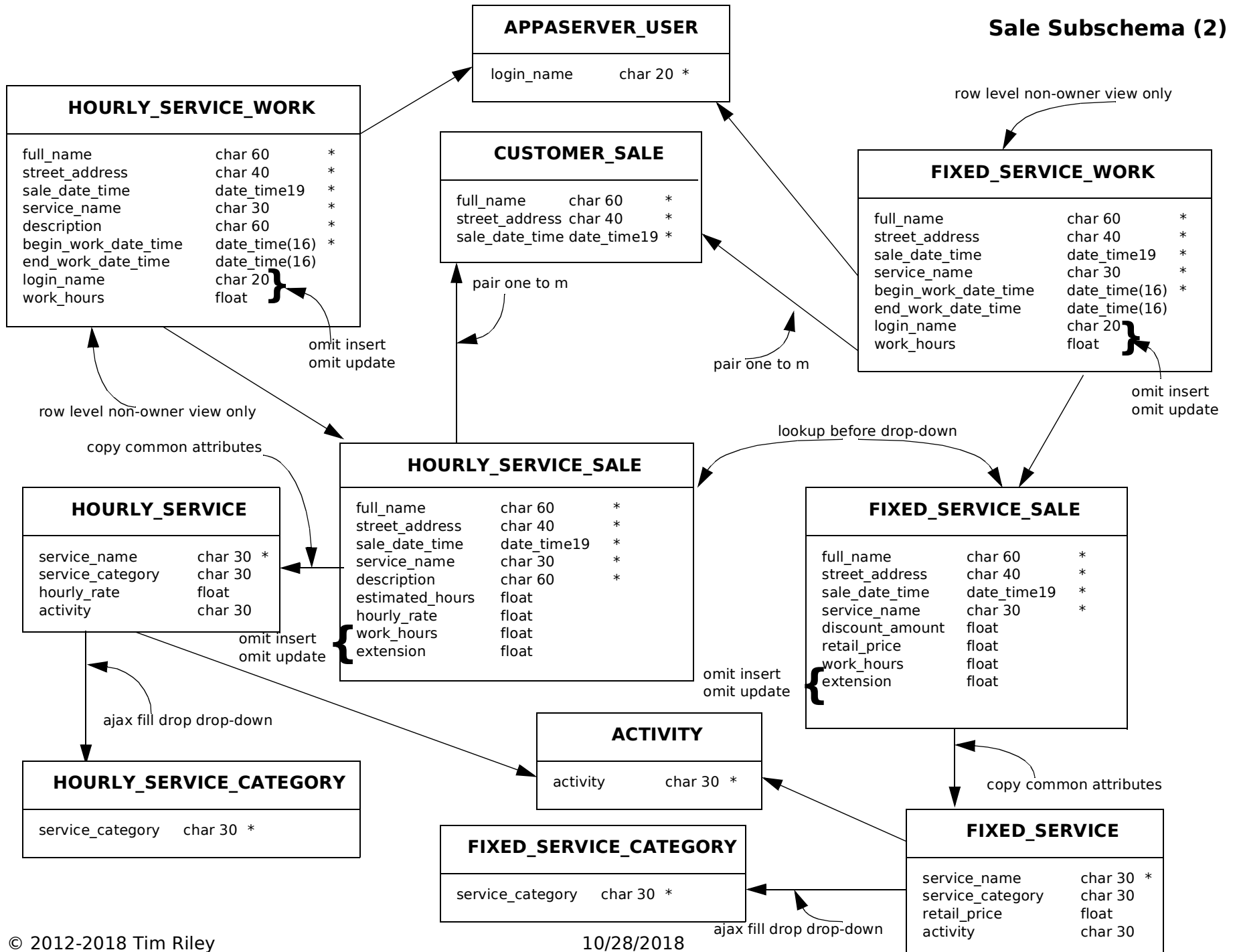
where account.subclassification = 'prepaid_asset'
or account.subclassification = 'discretionary'



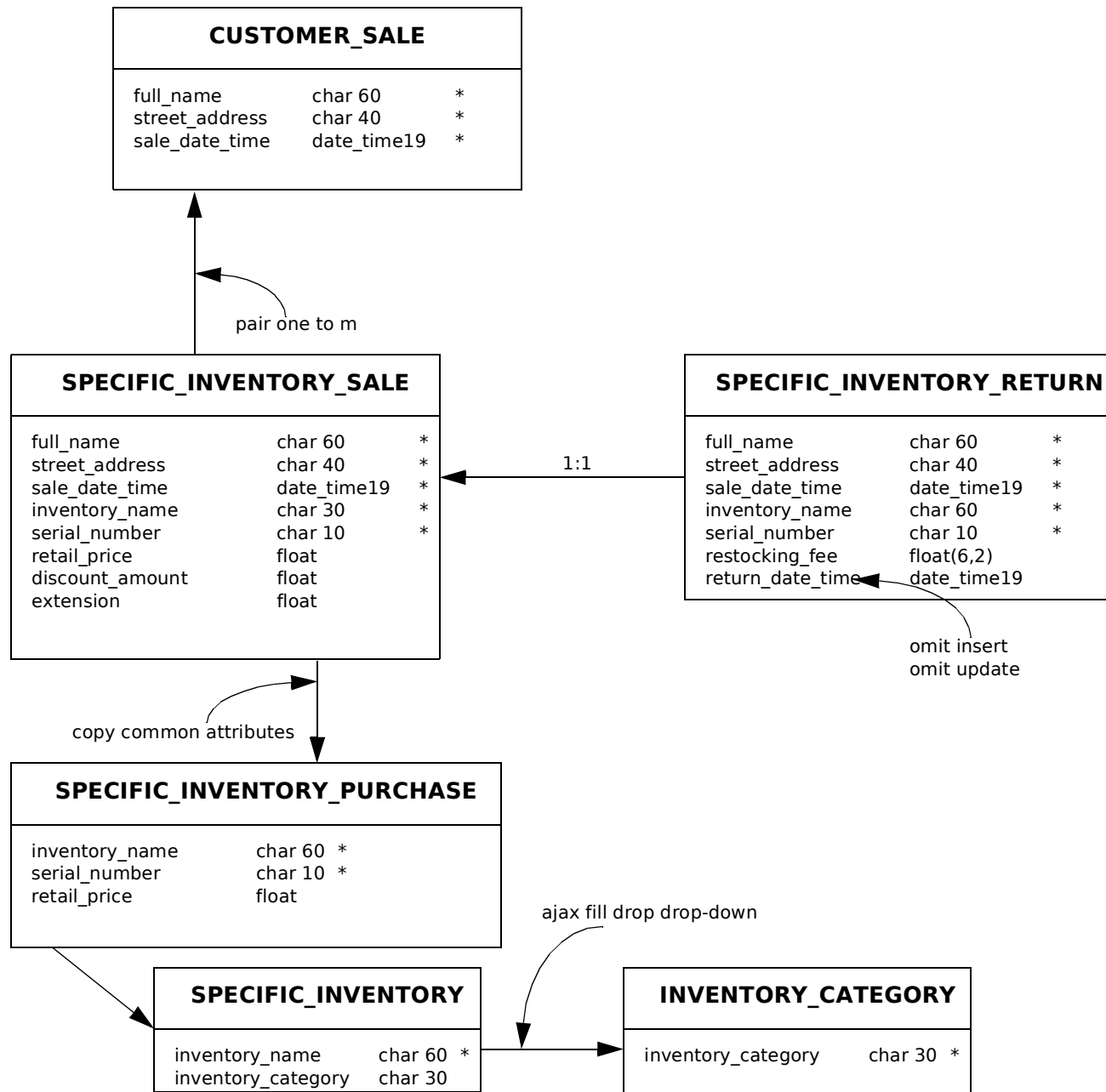
Sale Subschema (1)



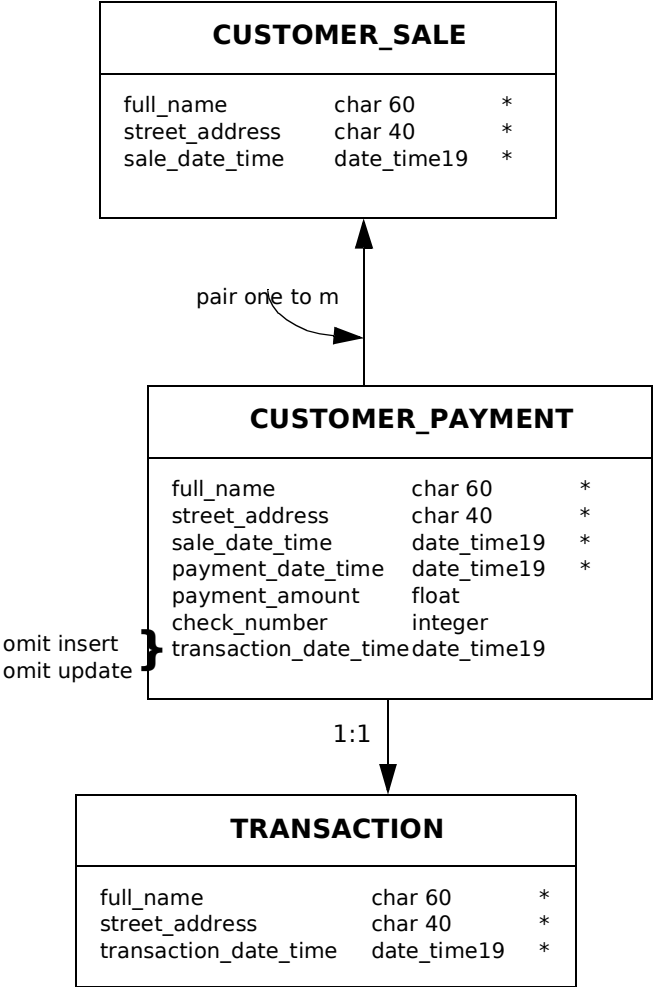
Sale Subschema (2)



Sale Subschema (3)



Customer Payment Subschema



Payroll Subschema

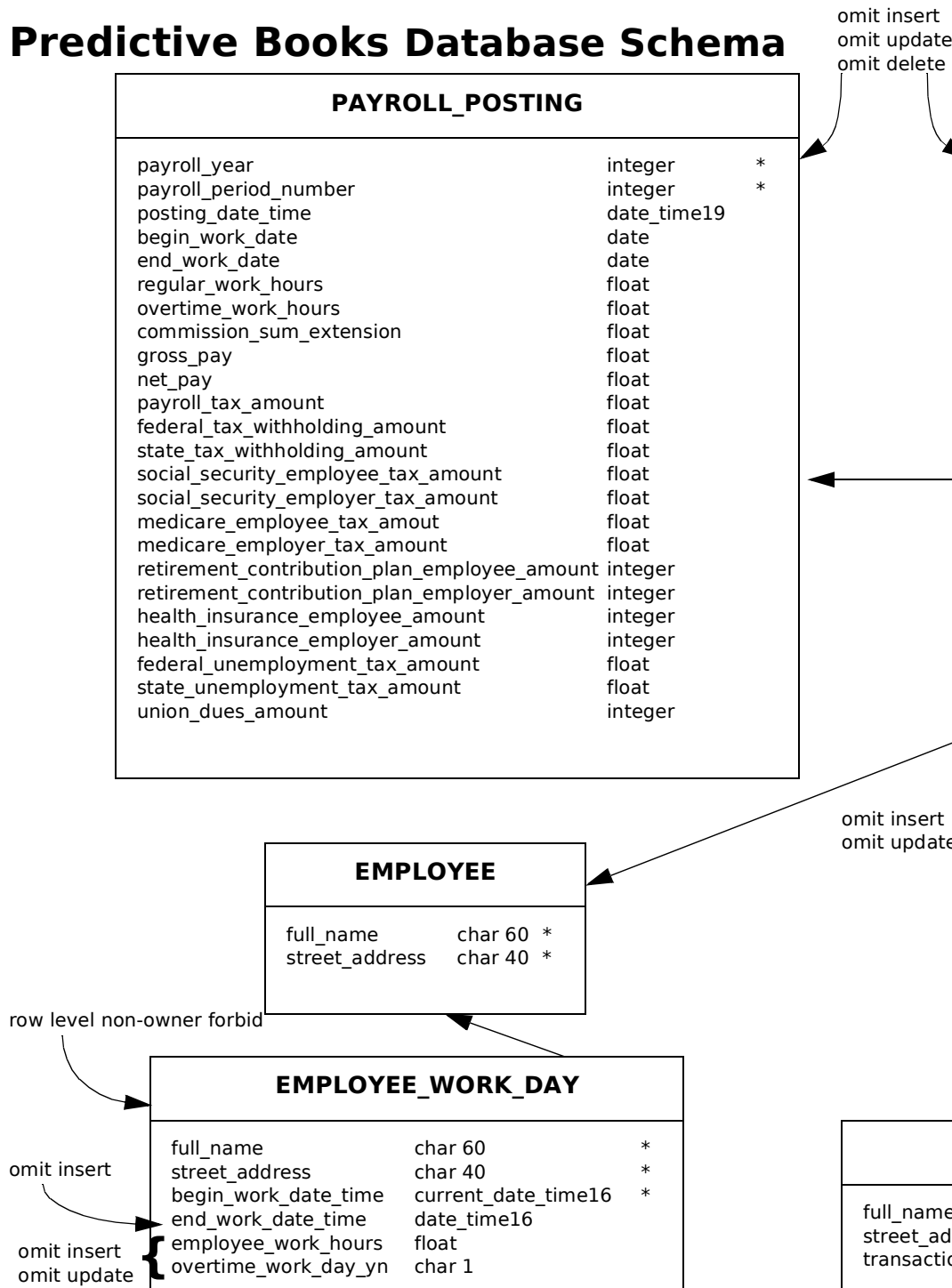
PAYROLL_POSTING		
payroll_year	integer	*
payroll_period_number	integer	*
posting_date_time	date_time19	
begin_work_date	date	
end_work_date	date	
regular_work_hours	float	
overtime_work_hours	float	
commission_sum_extension	float	
gross_pay	float	
net_pay	float	
payroll_tax_amount	float	
federal_tax_withholding_amount	float	
state_tax_withholding_amount	float	
social_security_employee_tax_amount	float	
social_security_employer_tax_amount	float	
medicare_employee_tax_amount	float	
medicare_employer_tax_amount	float	
retirement_contribution_plan_employee_amount	integer	
retirement_contribution_plan_employer_amount	integer	
health_insurance_employee_amount	integer	
health_insurance_employer_amount	integer	
federal_unemployment_tax_amount	float	
state_unemployment_tax_amount	float	
union_dues_amount	integer	

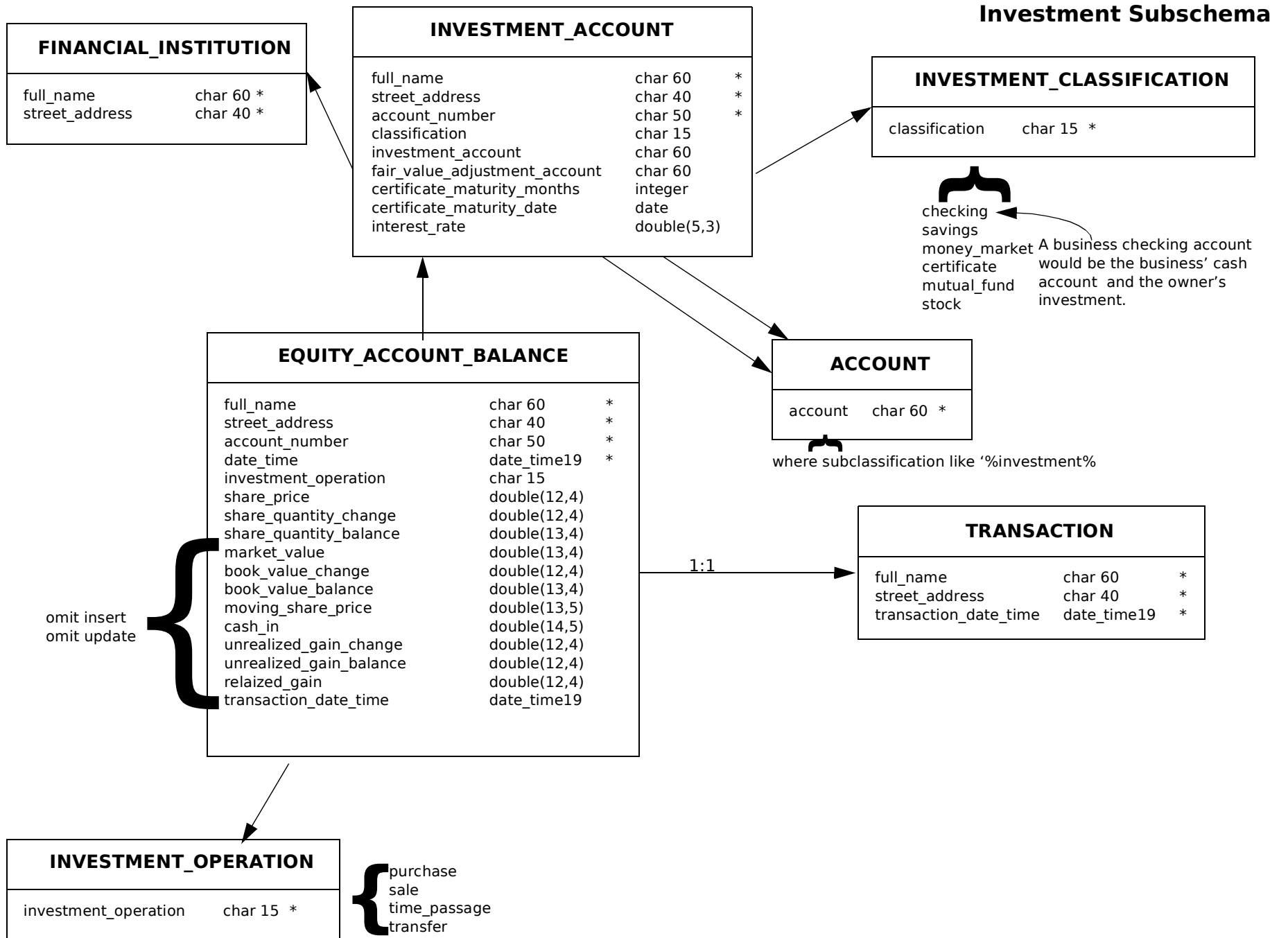
EMPLOYEE_WORK_PERIOD		
full_name	char 60	*
street_address	char 40	*
payroll_year	integer	*
payroll_period_number	integer	*
begin_work_date	date	
end_work_date	date	
regular_work_hours	float	
overtime_work_hours	float	
commission_sum_extension	float	
gross_pay	float	
net_pay	float	
payroll_tax_amount	float	
federal_tax_withholding_amount	float	
state_tax_withholding_amount	float	
social_security_employee_tax_amount	float	
social_security_employer_tax_amount	float	
medicare_employee_tax_amount	float	
medicare_employer_tax_amount	float	
retirement_contribution_plan_employee_amount	integer	
retirement_contribution_plan_employer_amount	integer	
health_insurance_employee_amount	integer	
health_insurance_employer_amount	integer	
federal_unemployment_tax_amount	float	
state_unemployment_tax_amount	float	
union_dues_amount	integer	
transaction_date_time	date_time19	

EMPLOYEE		
full_name	char 60	*
street_address	char 40	*

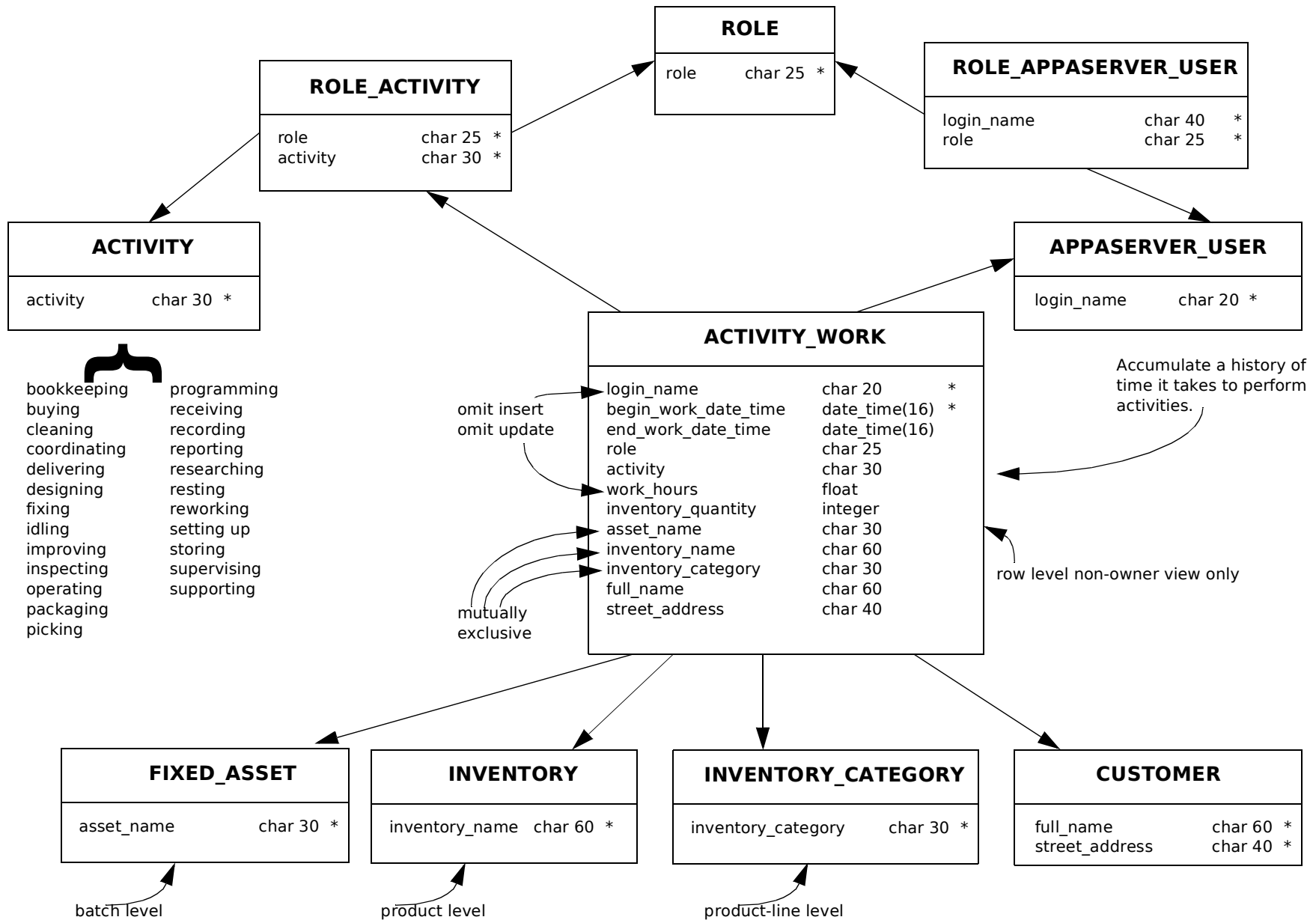
EMPLOYEE_WORK_DAY		
full_name	char 60	*
street_address	char 40	*
begin_work_date_time	current_date_time16	*
end_work_date_time	date_time16	
employee_work_hours	float	
overtime_work_day_yn	char 1	

TRANSACTION		
full_name	char 60	*
street_address	char 40	*
transaction_date_time	date_time19	*

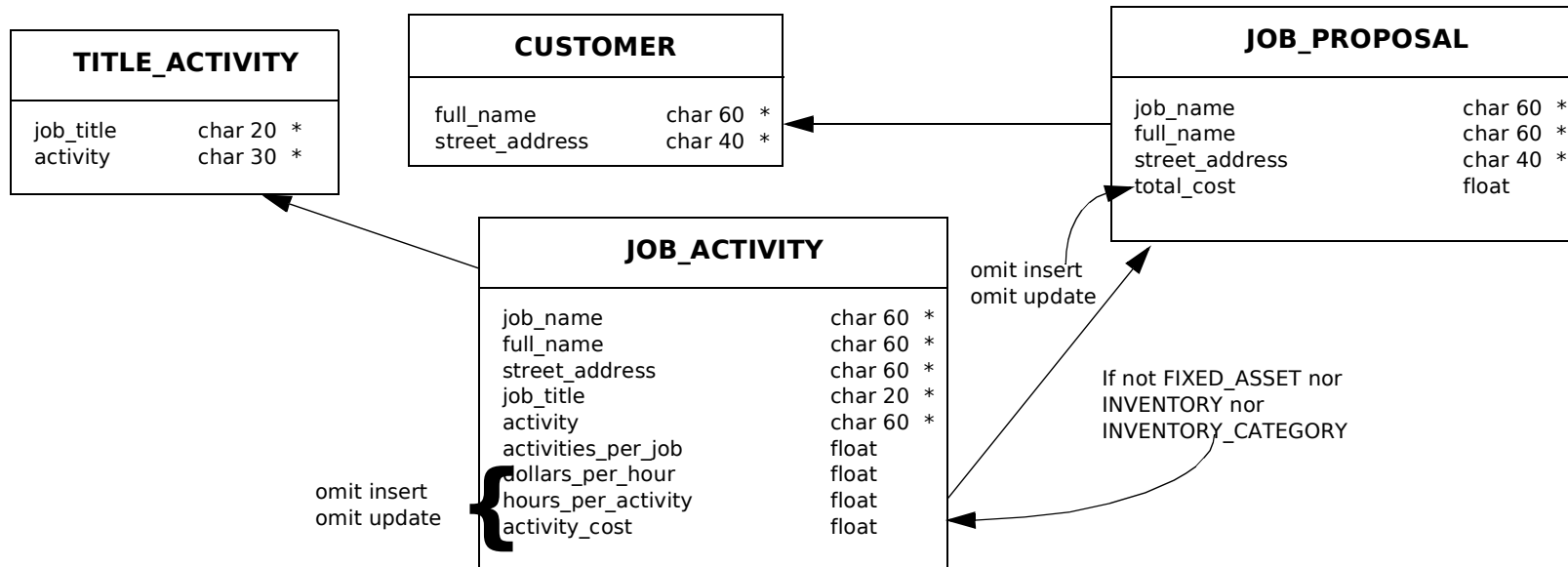




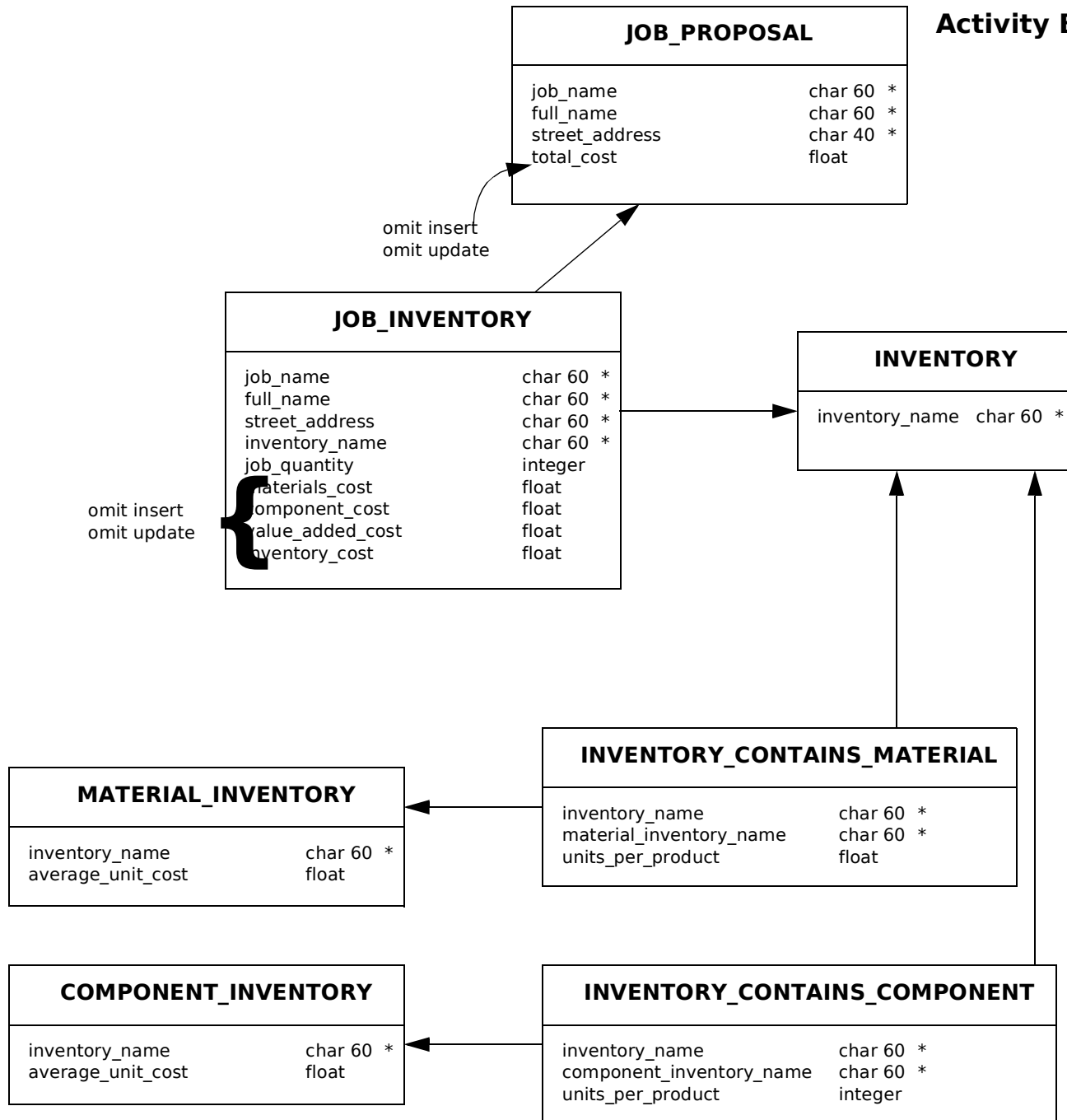
Activity Based Costs Subschema (1)



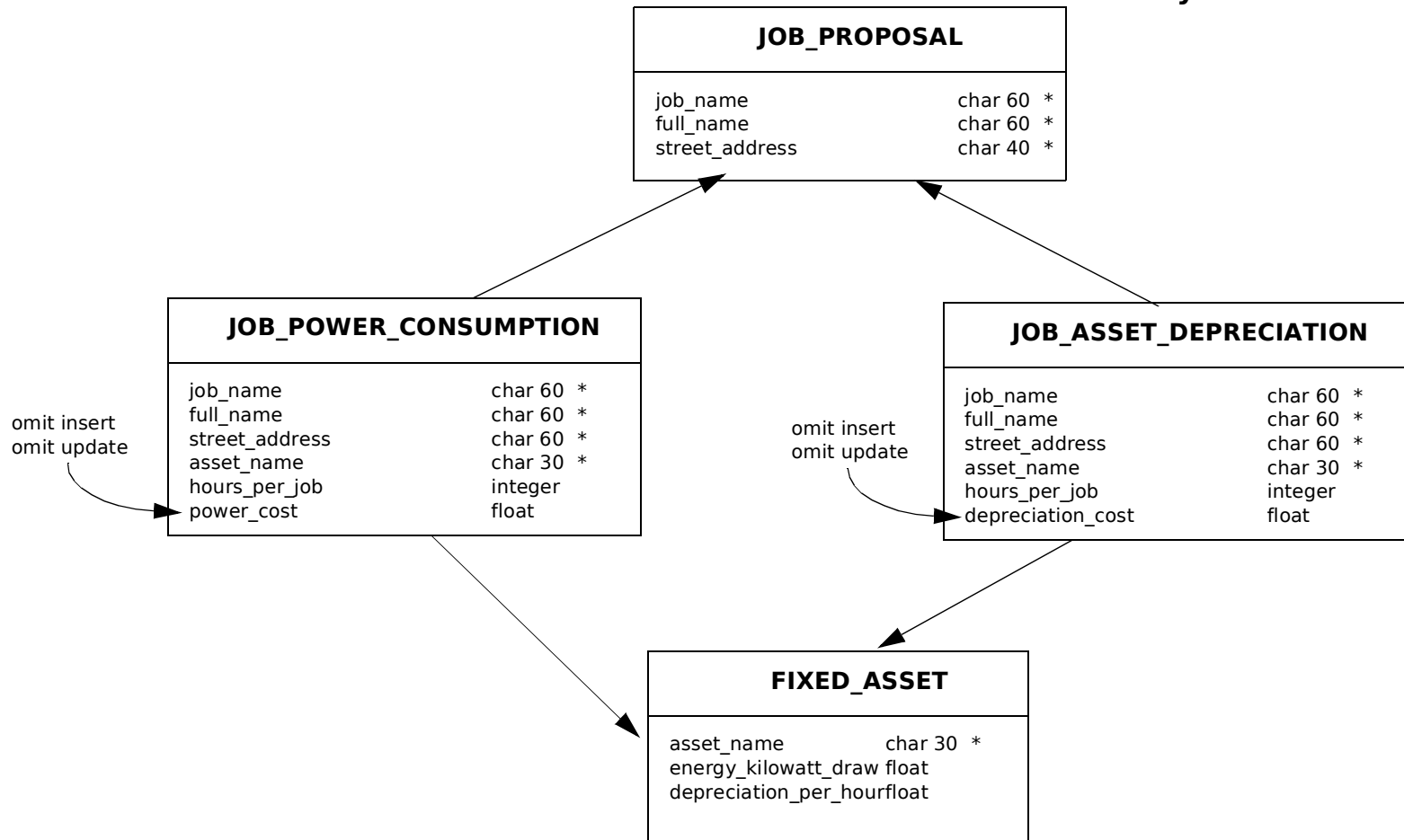
Activity Based Costs Subschema (2)



Activity Based Costs Subschema (3)



Activity Based Costs Subschema (4)



Rental Property Subschema

