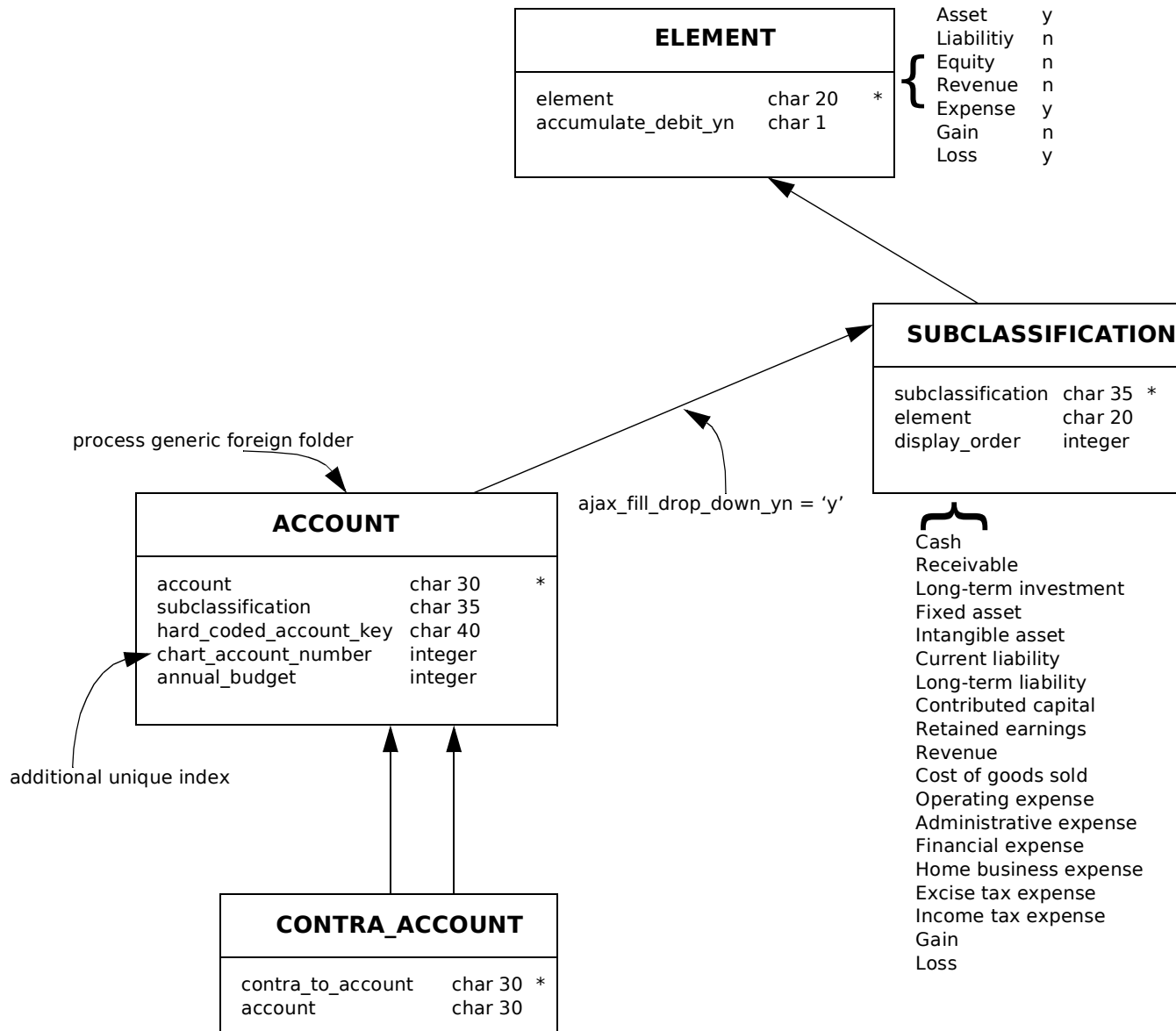
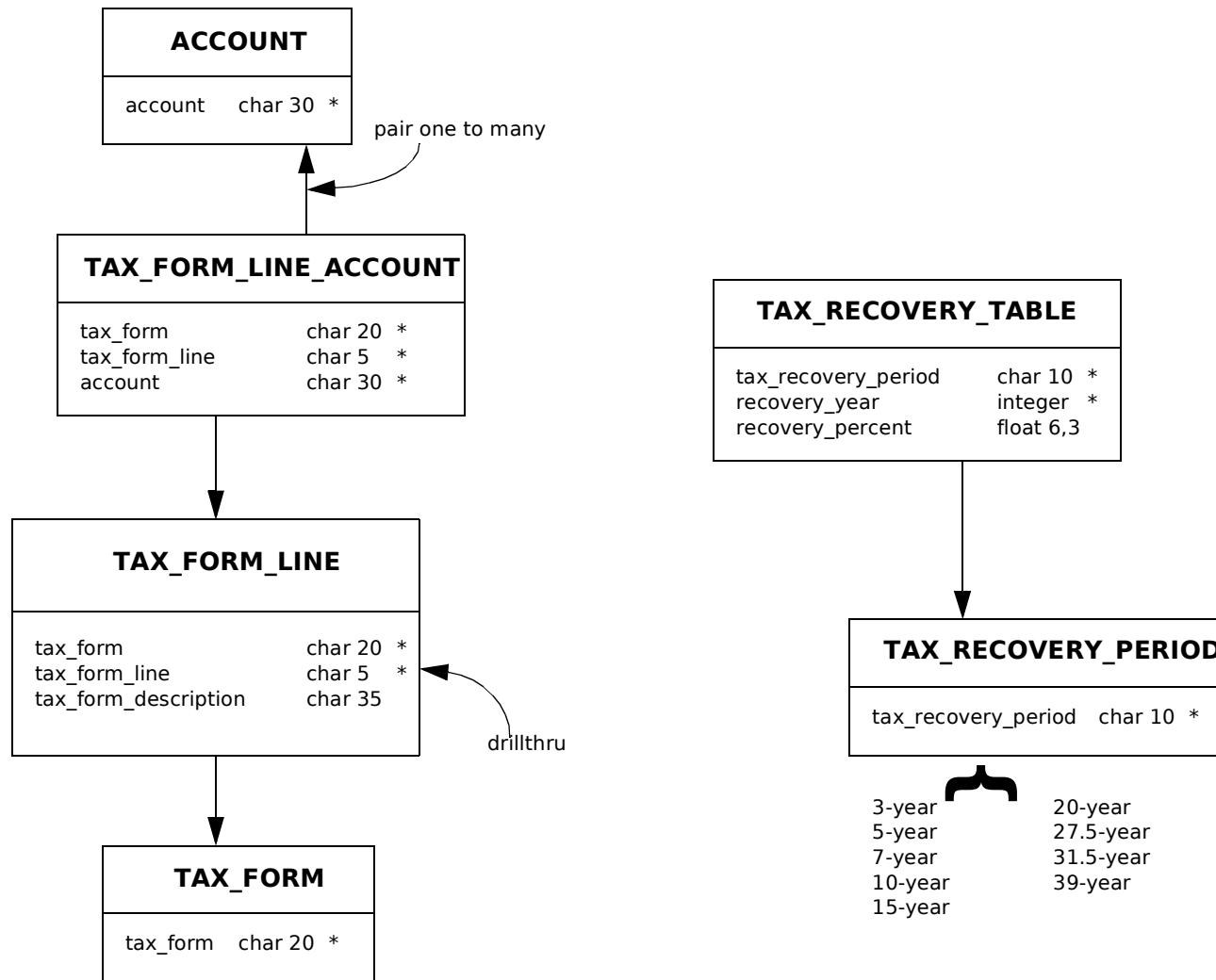
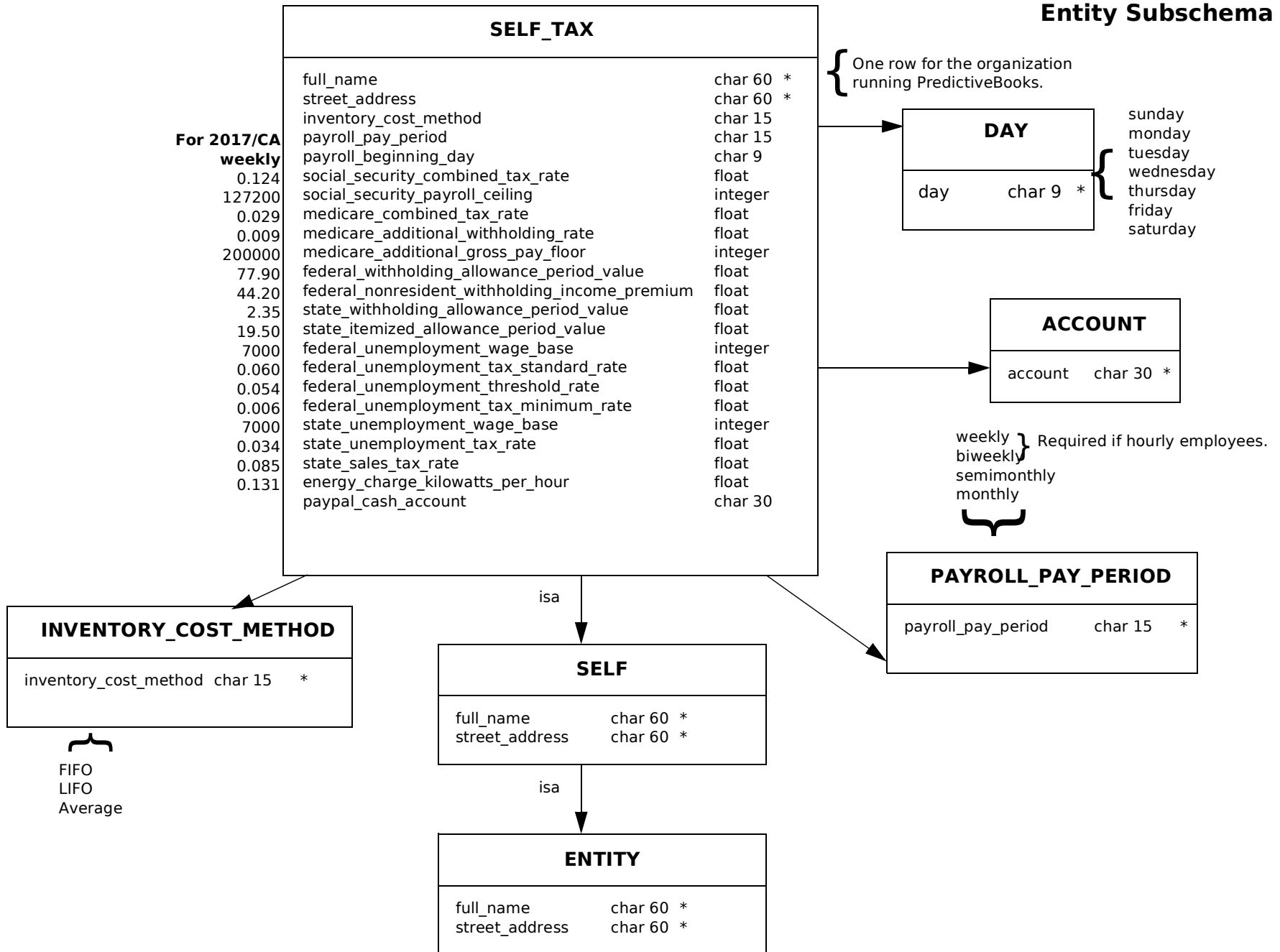


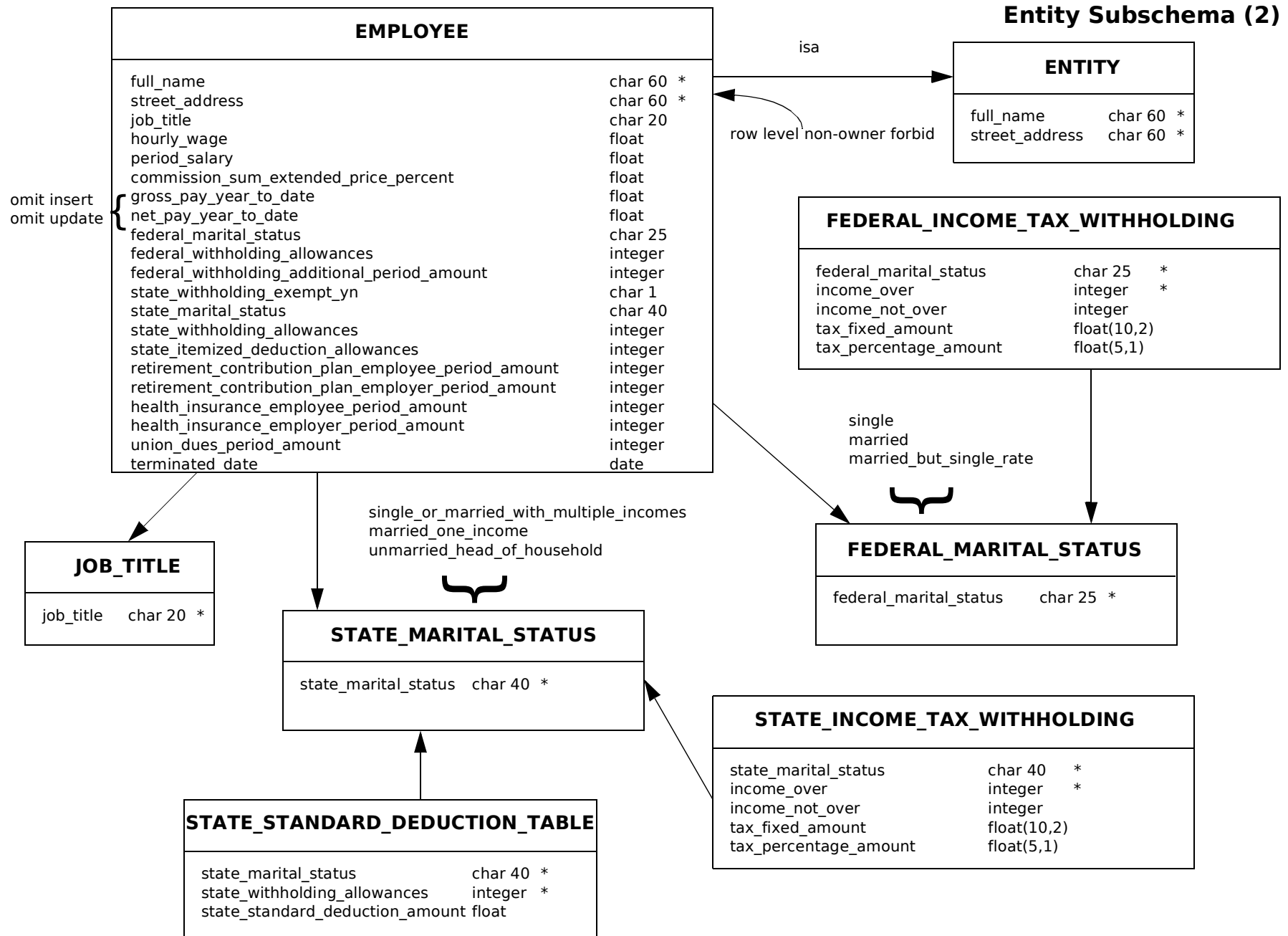
Account Subschema



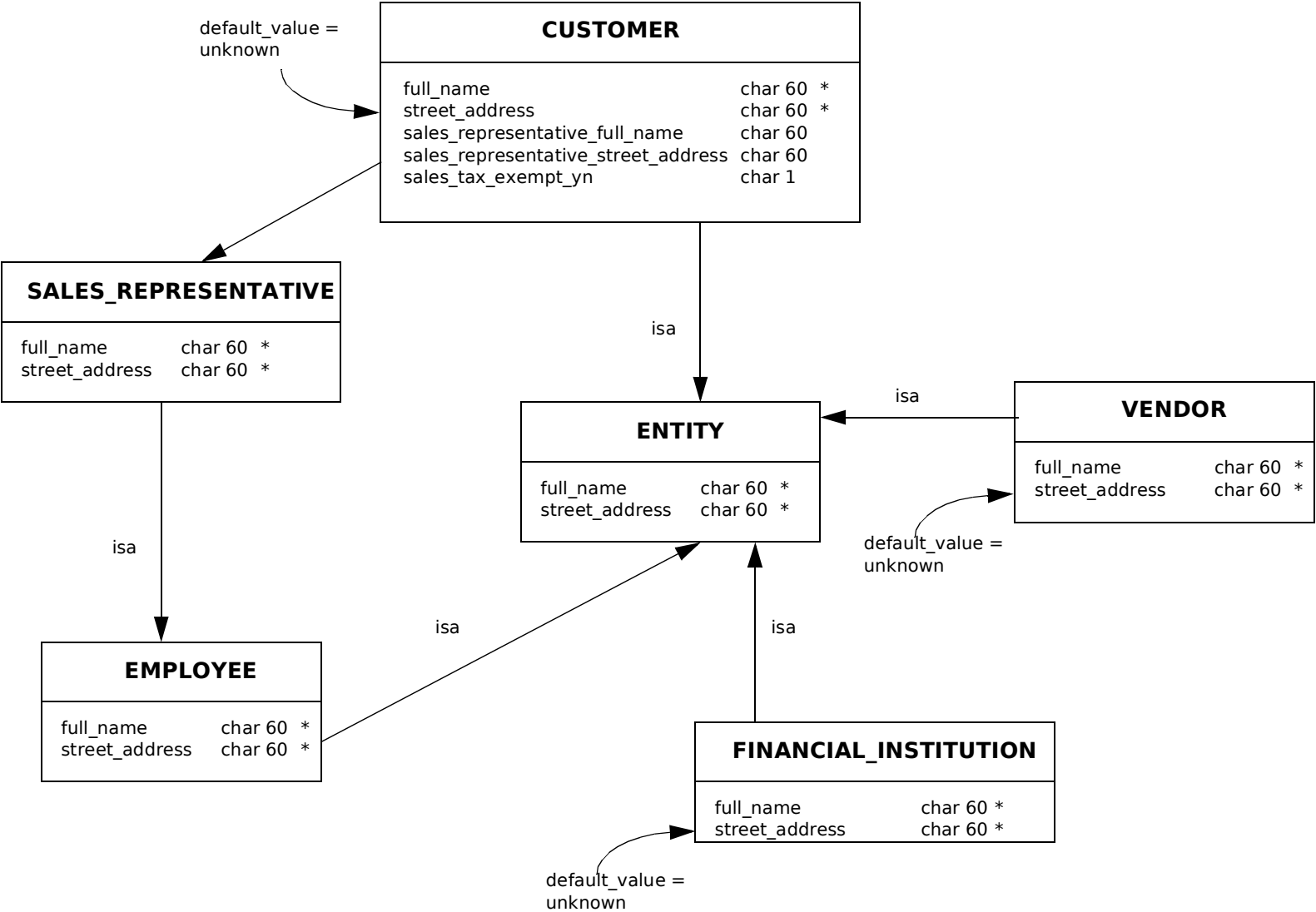


Entity Subschema (1)

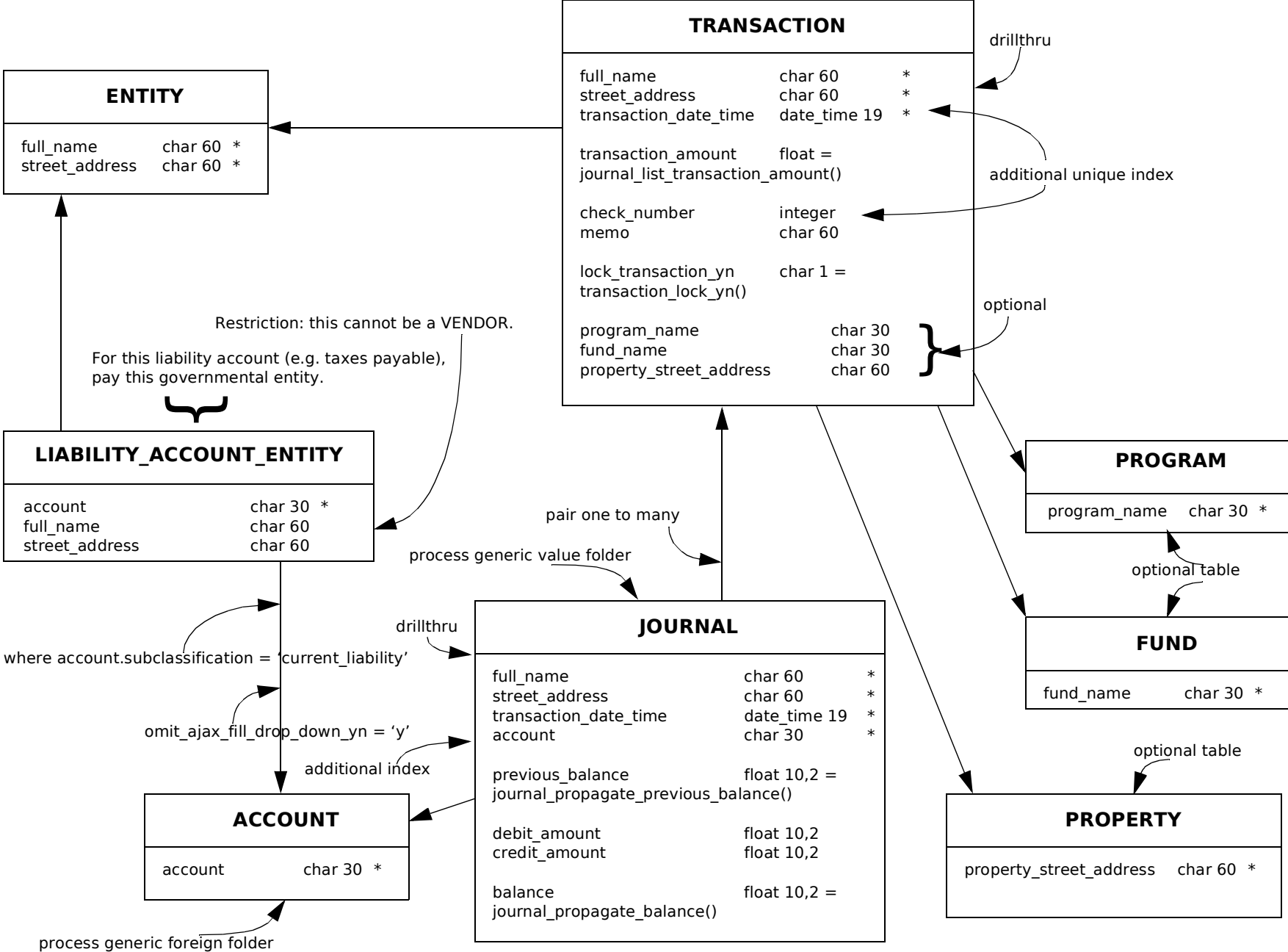




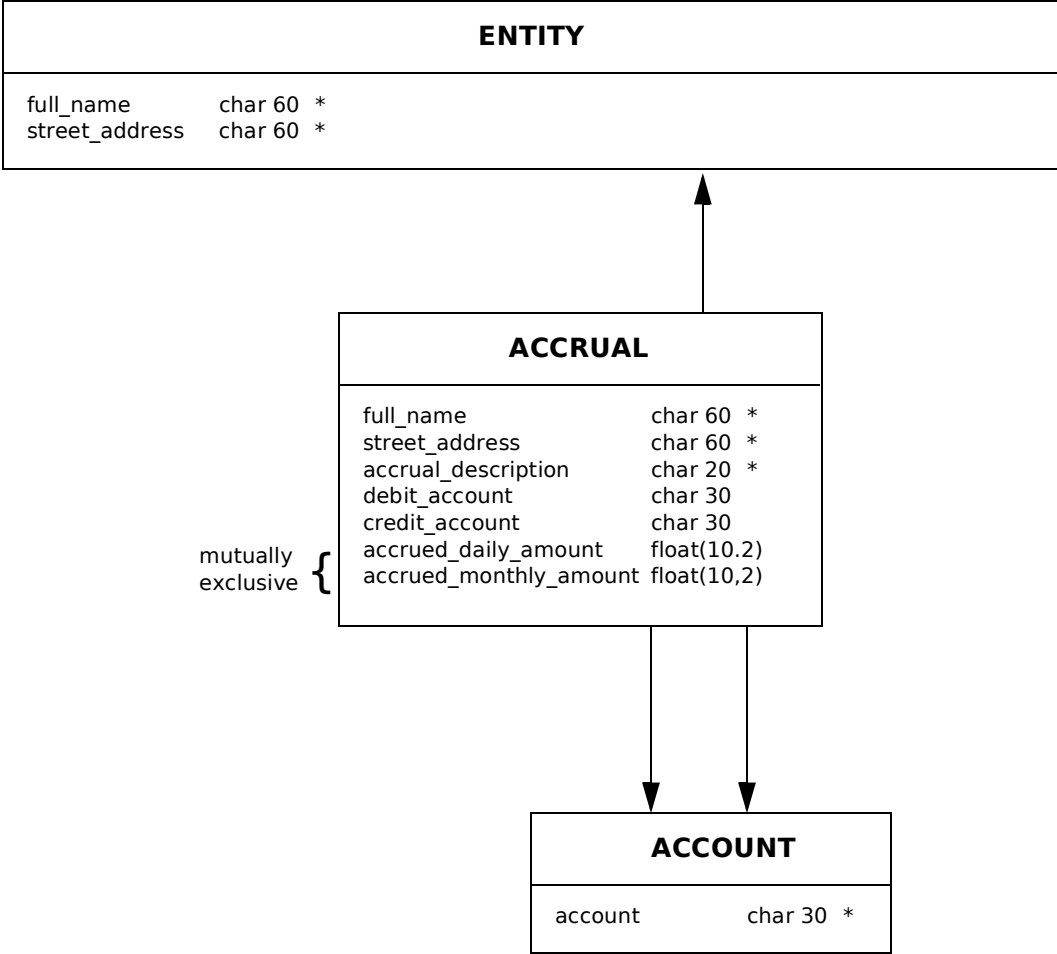
Entity Subschema (3)



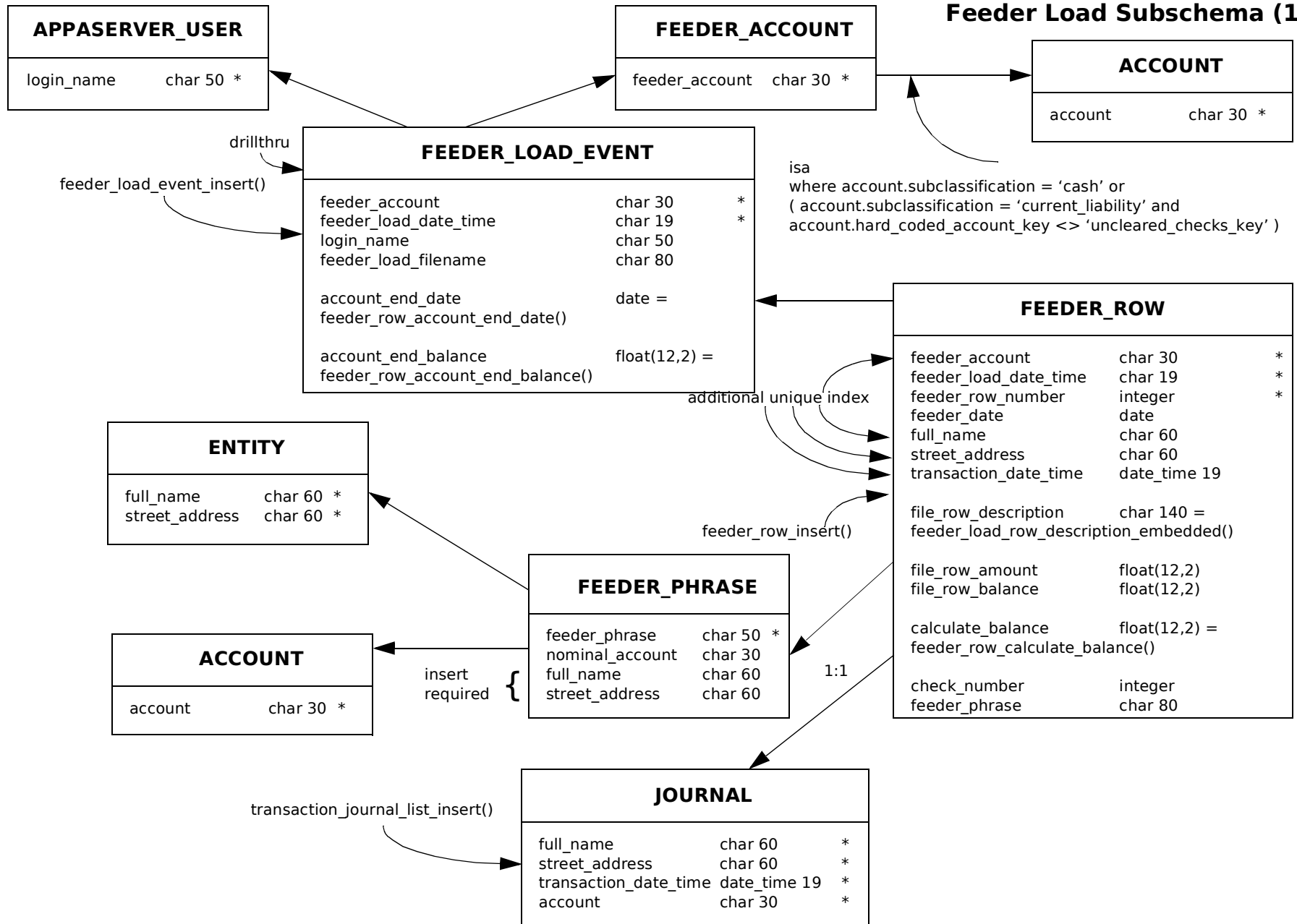
Transaction Subschema



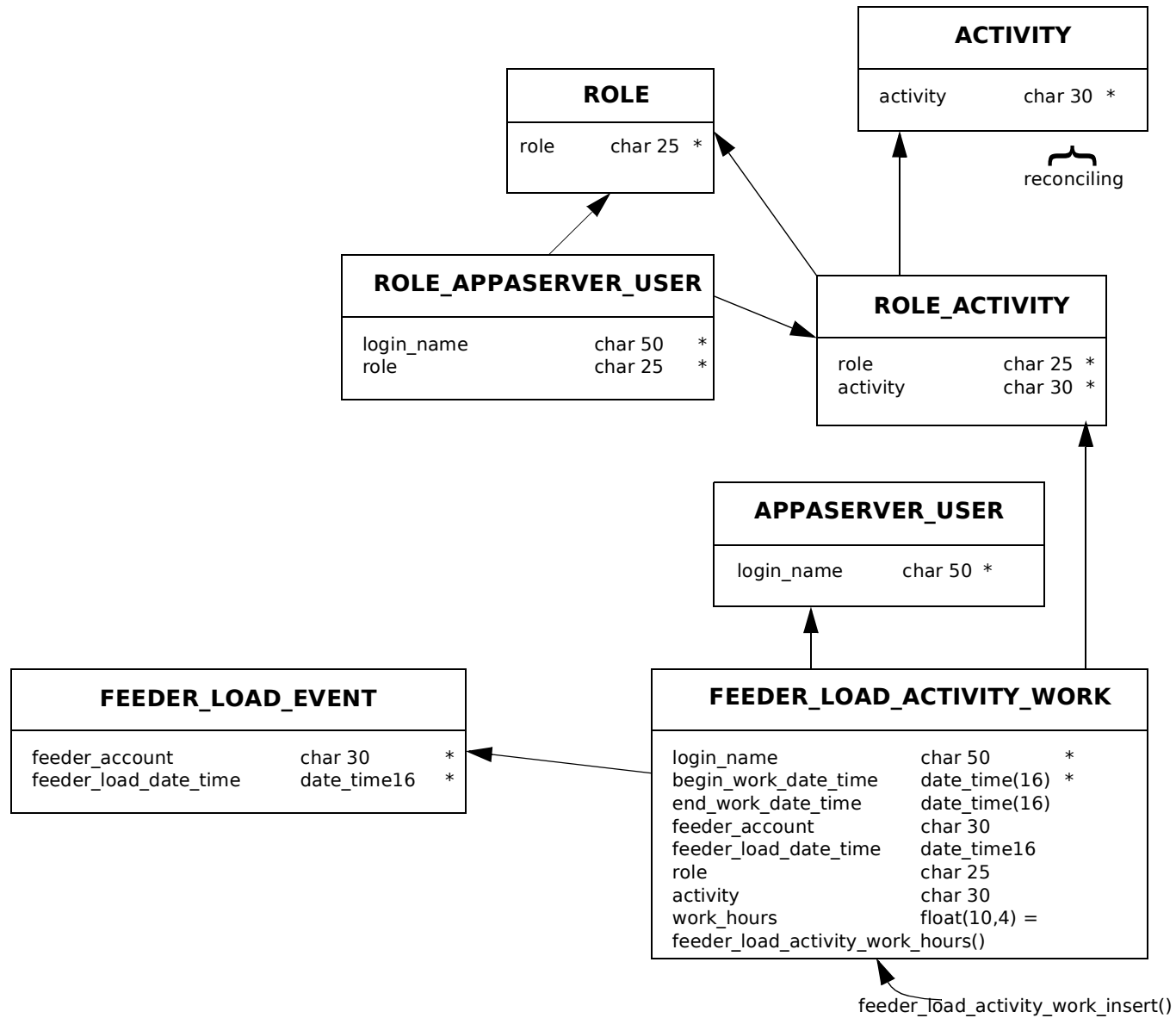
Accrual Subschema



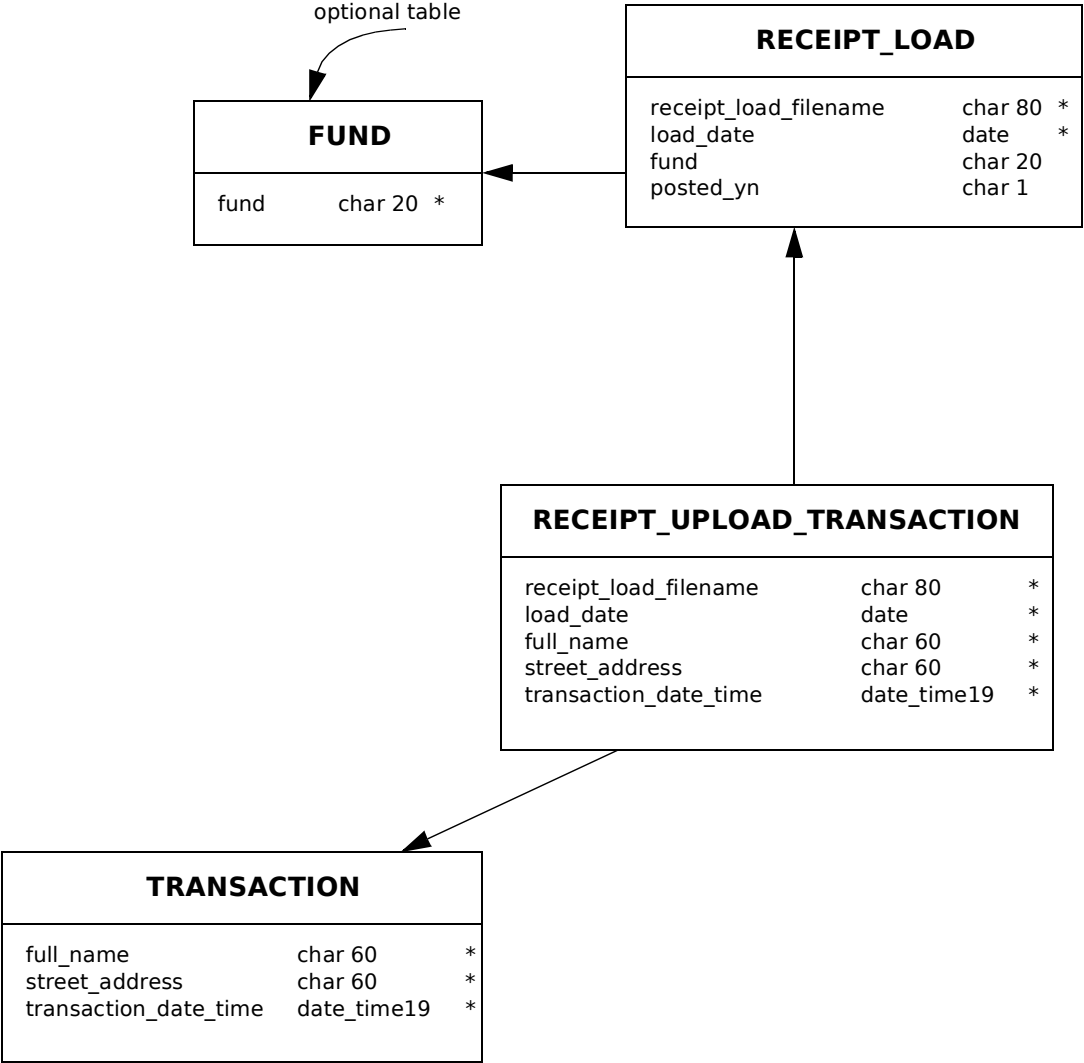
Feeder Load Subschema (1)



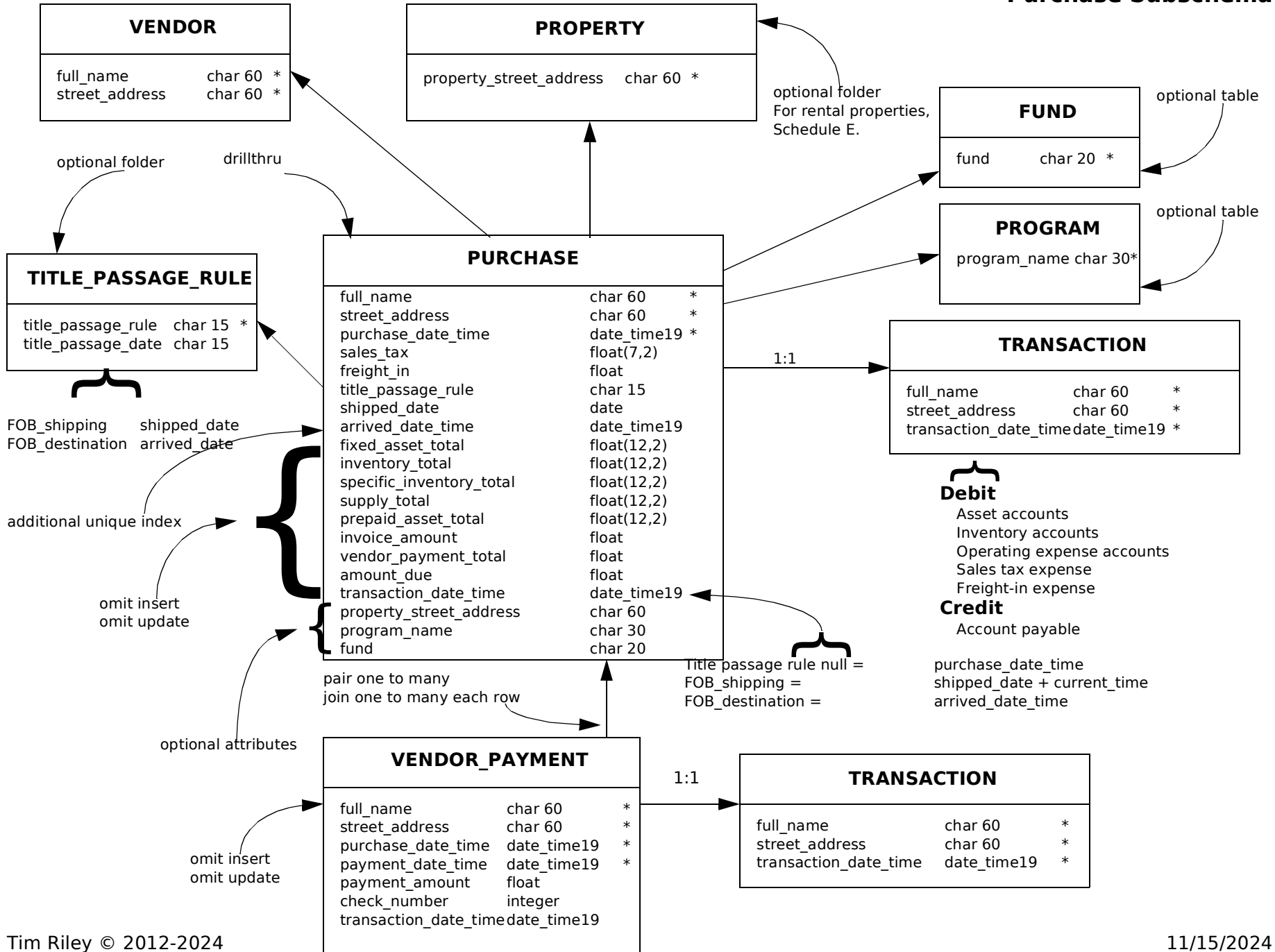
Feeder Load Subschema (3)



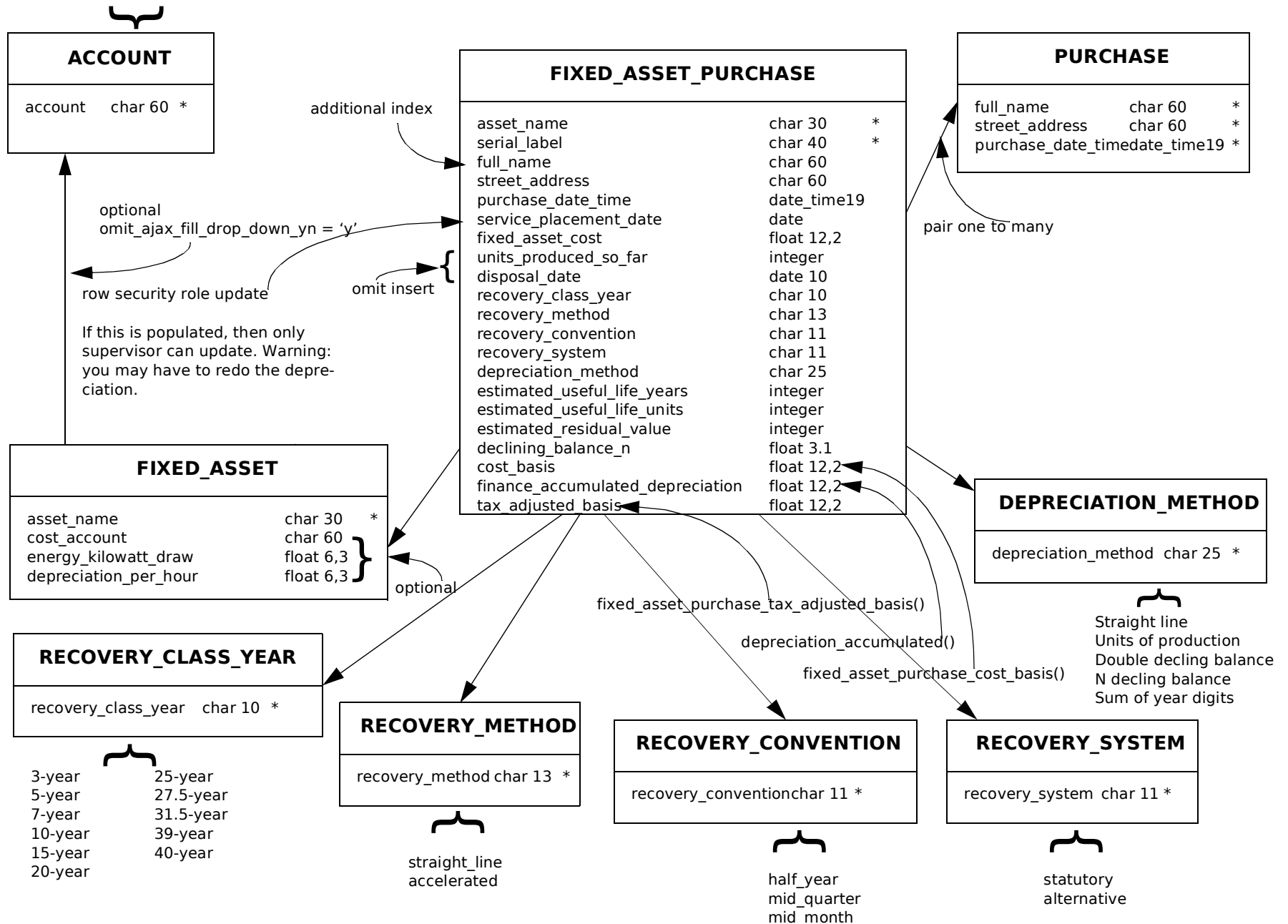
Receipt Upload Subschema

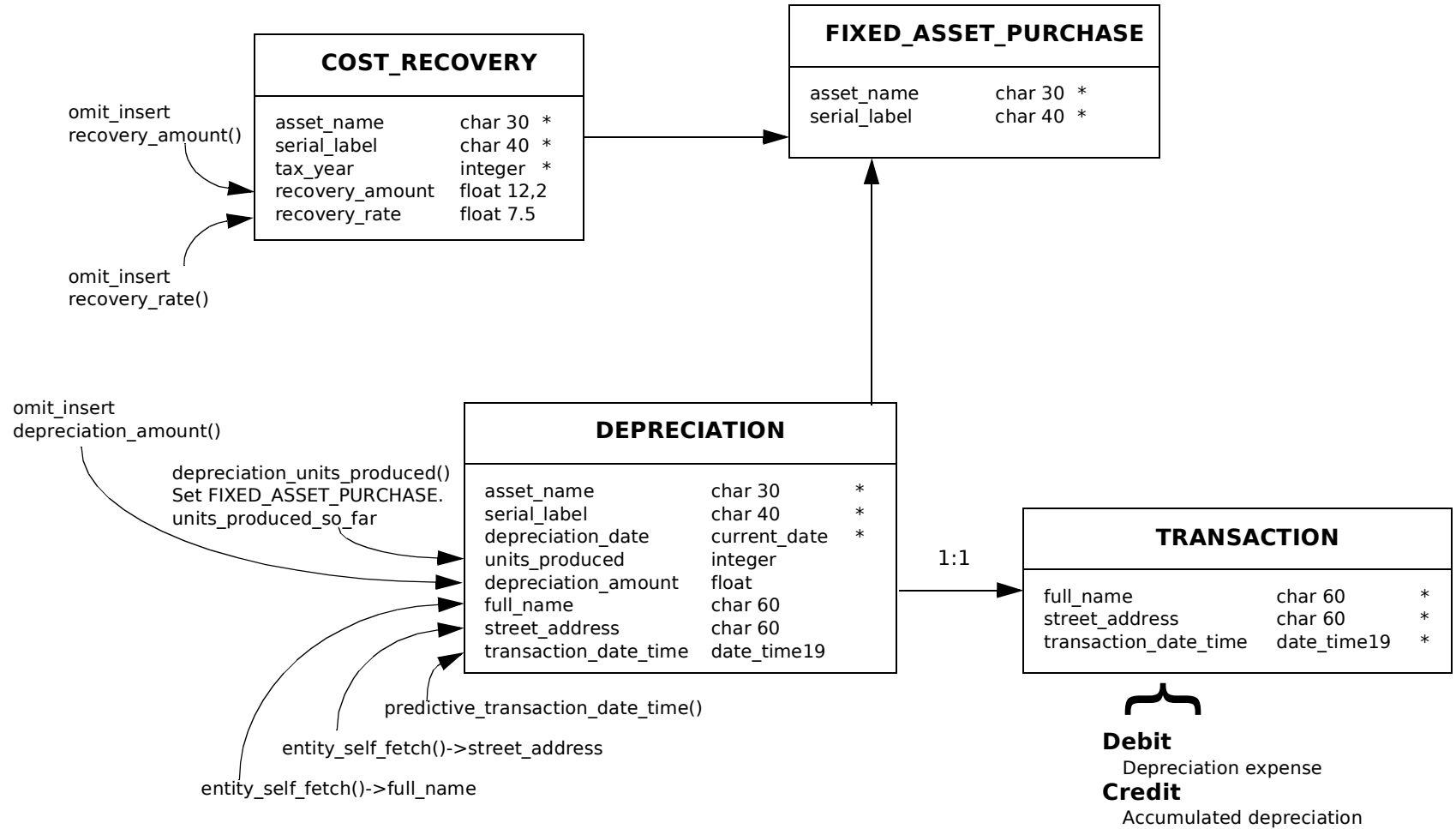


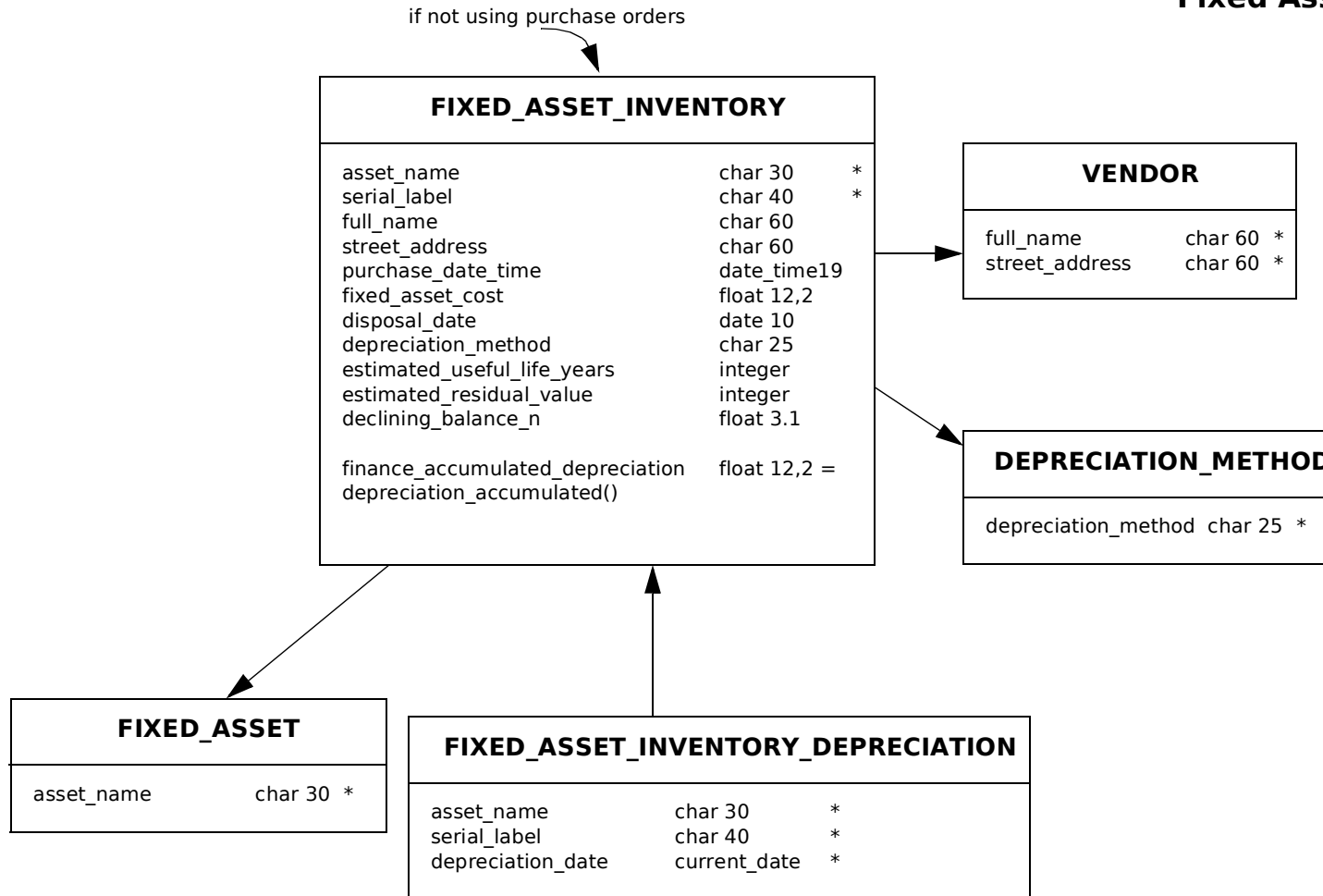
Purchase Subschema



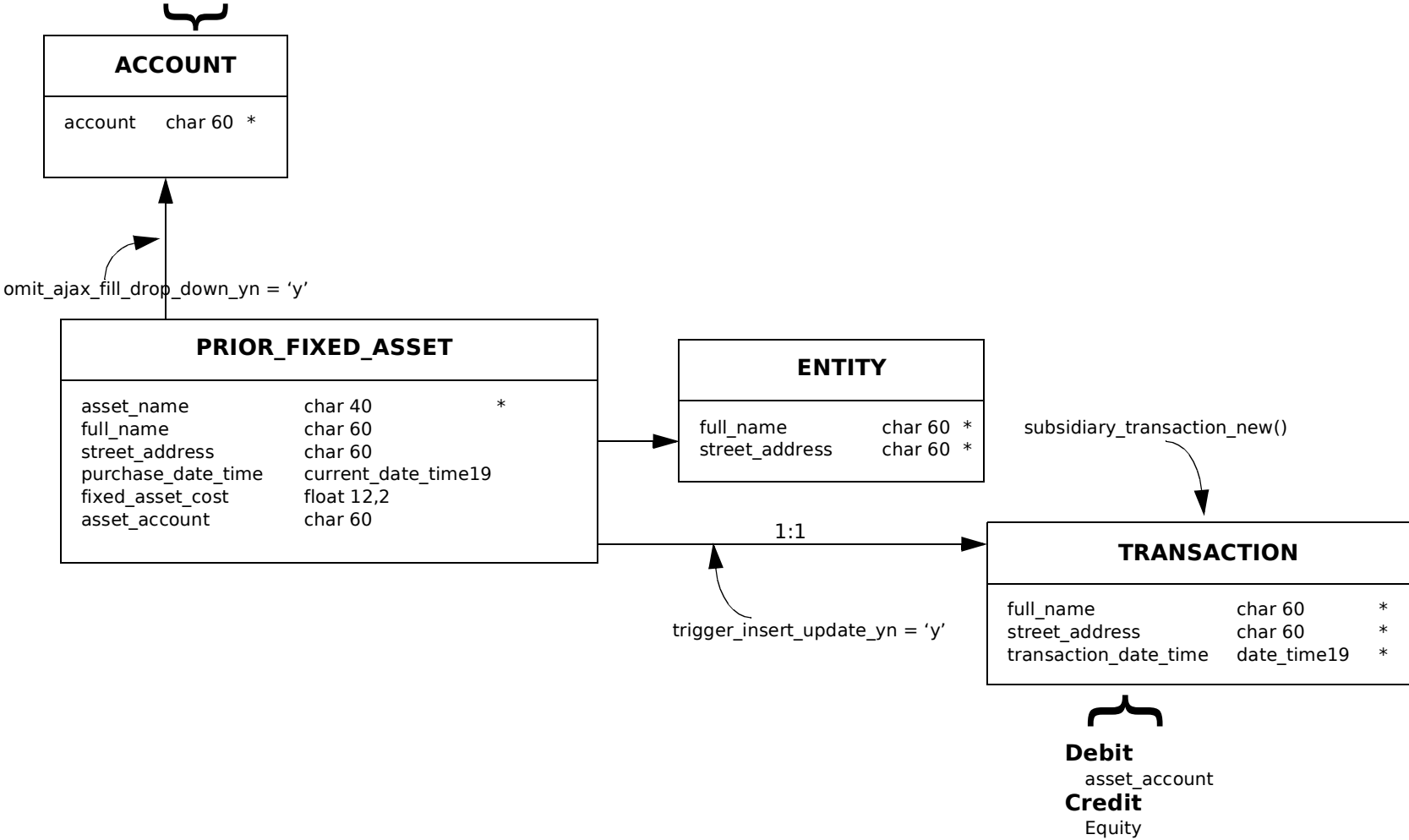
where account.subclassification = 'property_plant_equipment' or 'fixed_asset'



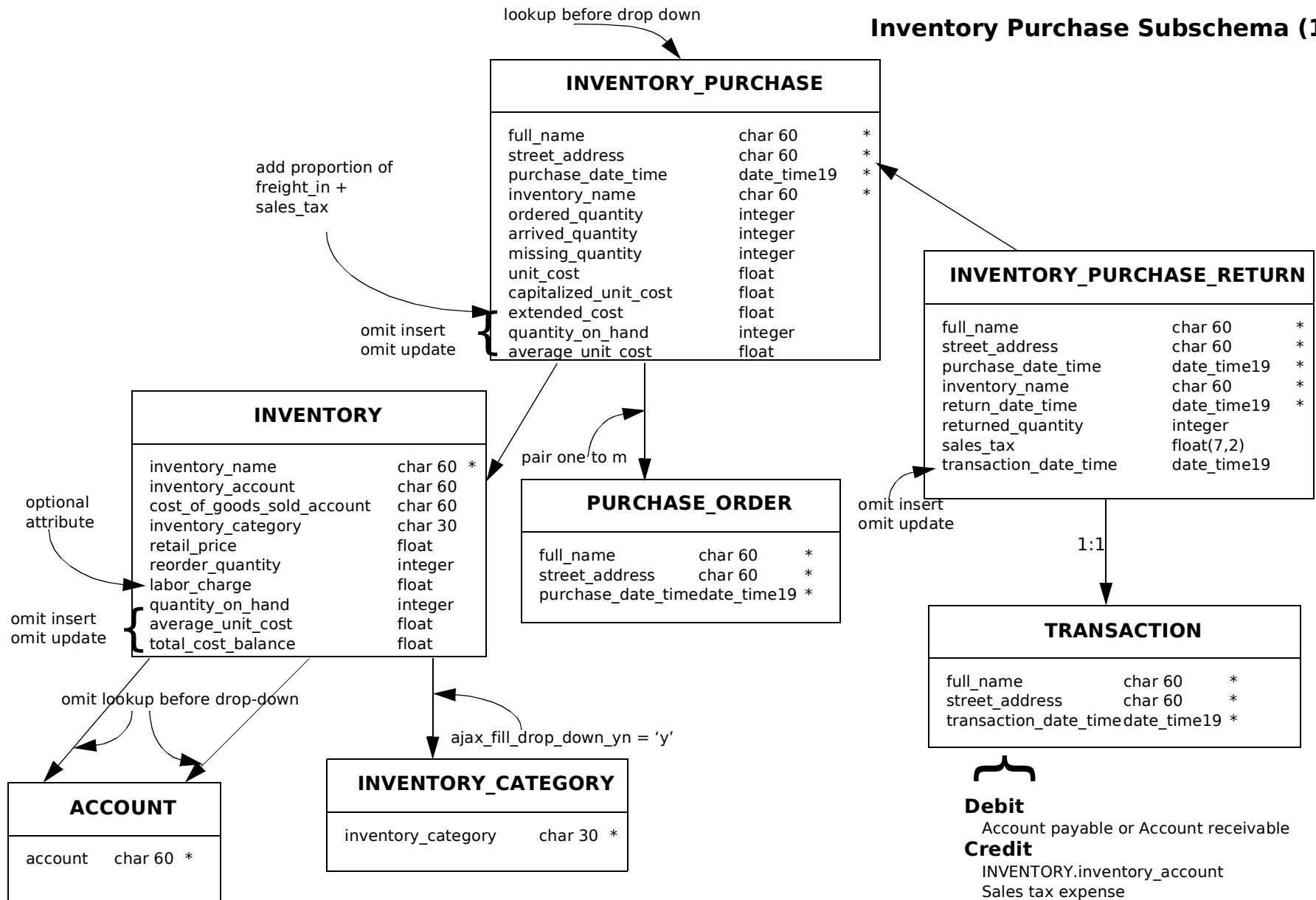




where account.subclassification = 'property_plant_equipment' or 'fixed_asset'

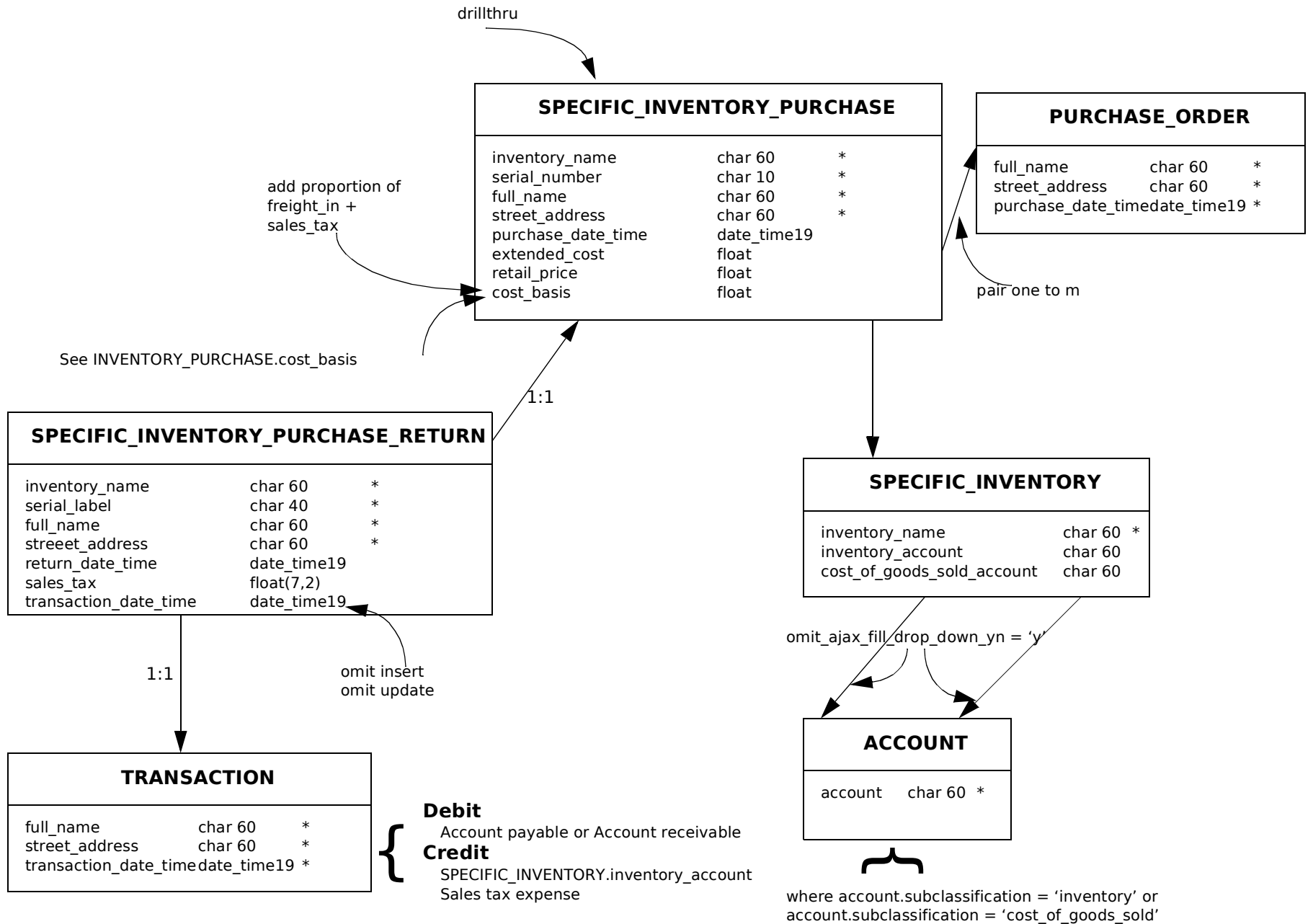


Inventory Purchase Subschema (1)

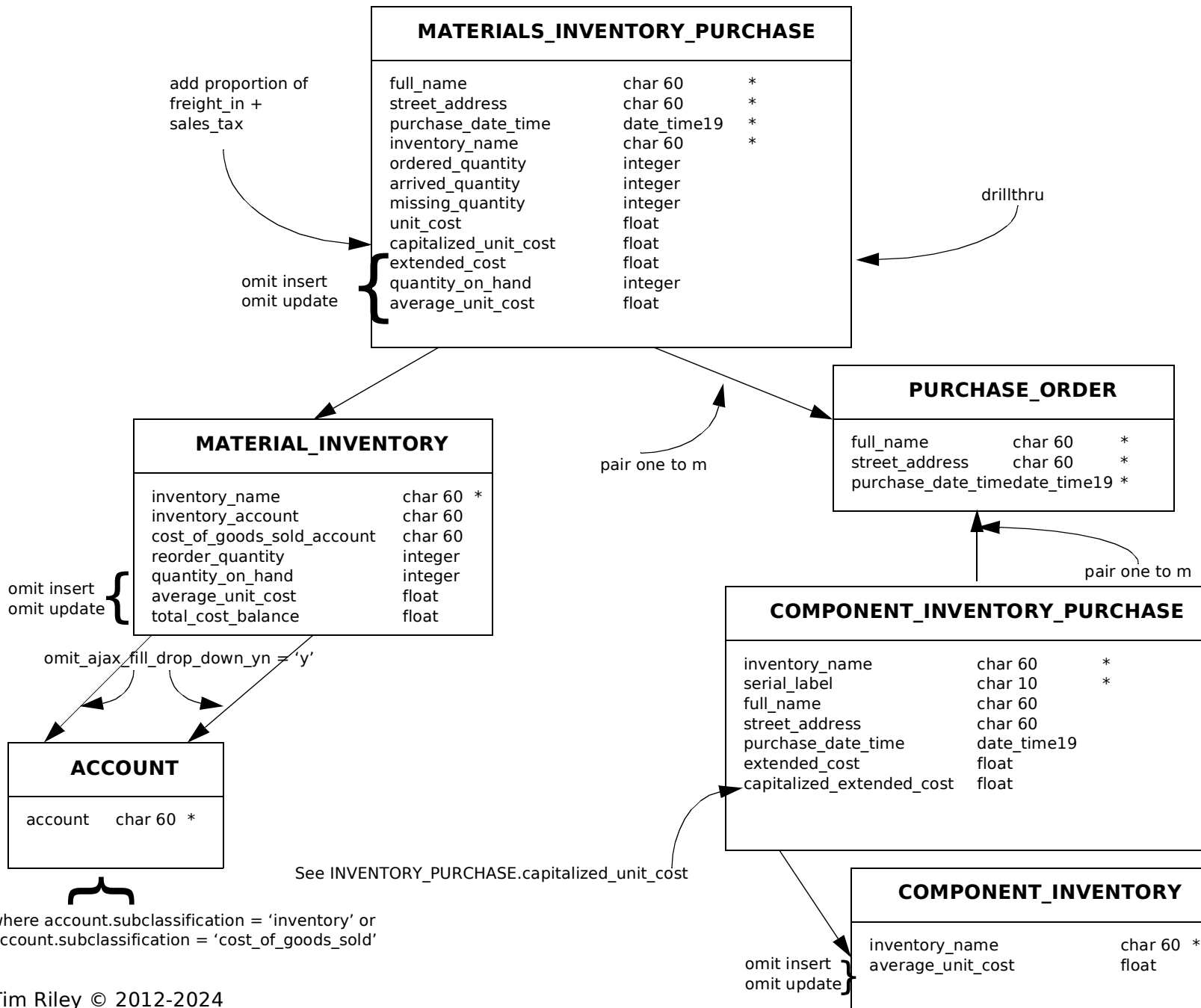


where account.subclassification = 'inventory' or
 account.subclassification = 'cost_of_goods_sold'

Inventory Purchase Subschema (2)

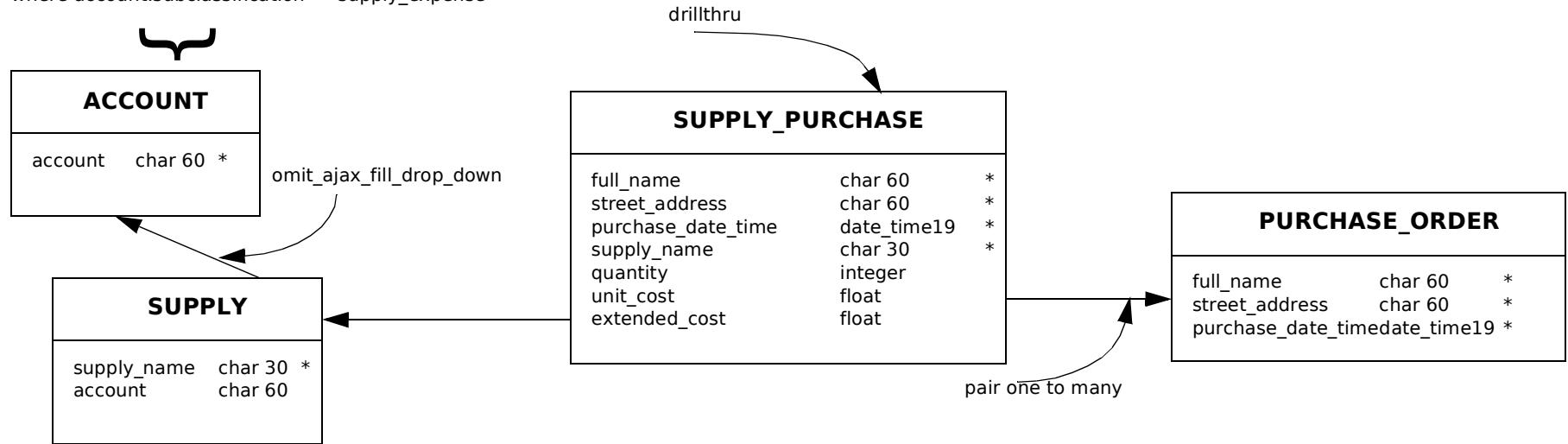


Inventory Purchase Subschema (3)

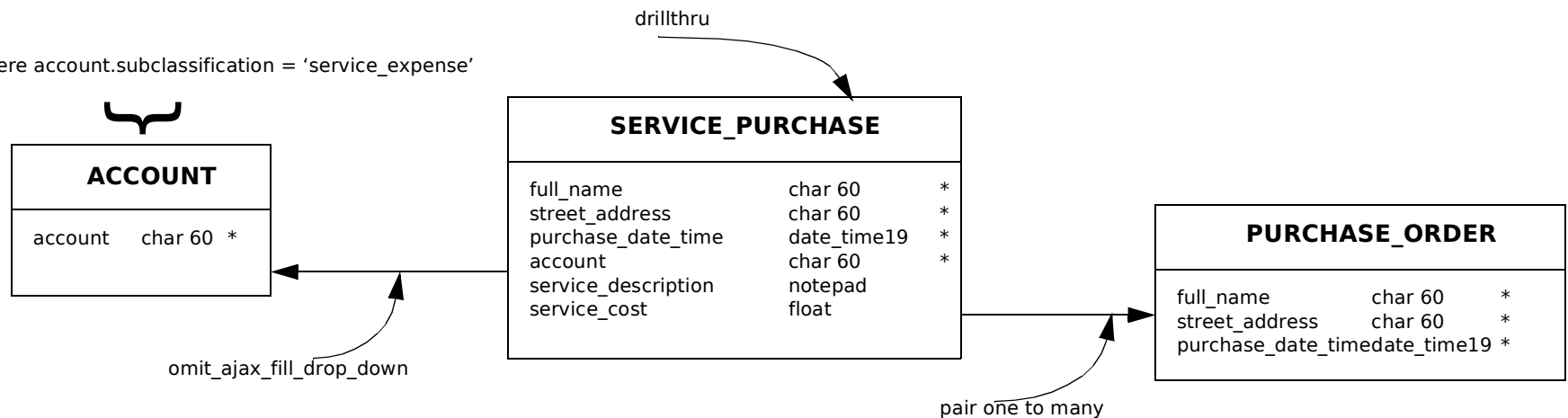


Supply/Service Purchase Subschema

where account.subclassification = 'supply_expense'

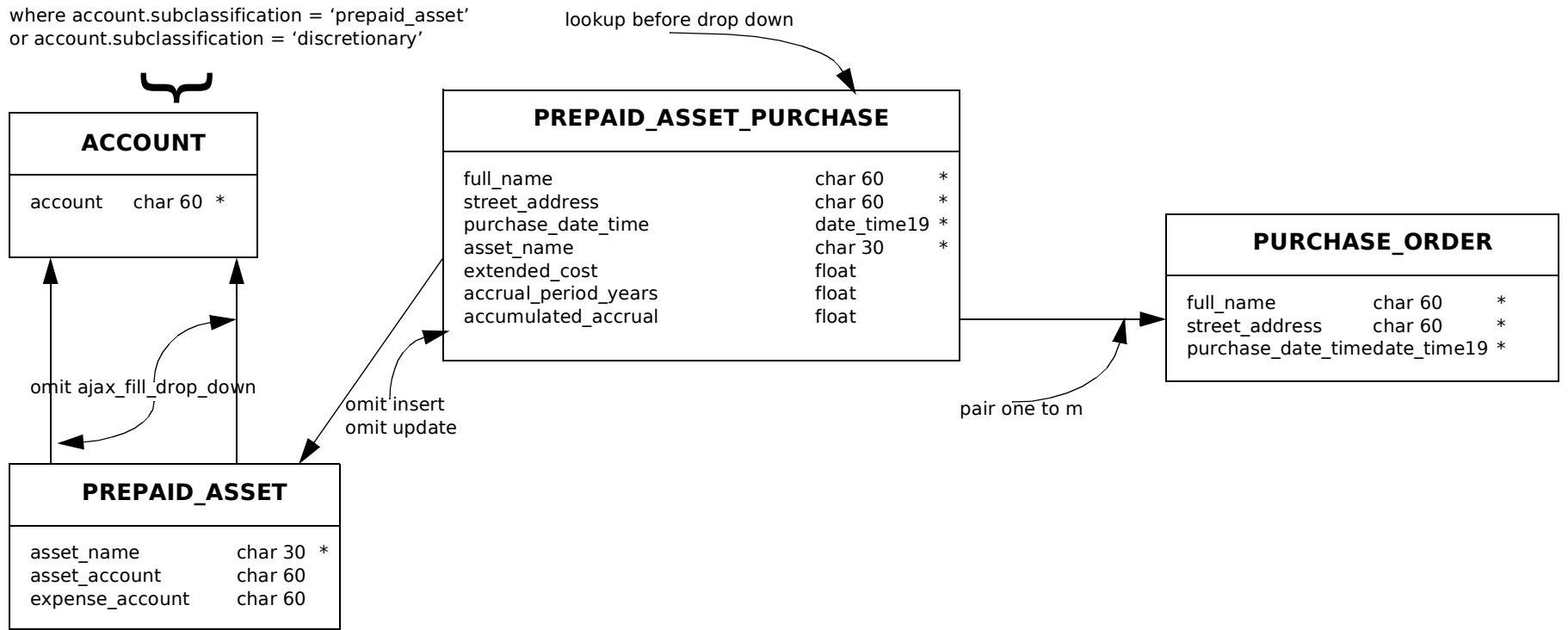


where account.subclassification = 'service_expense'

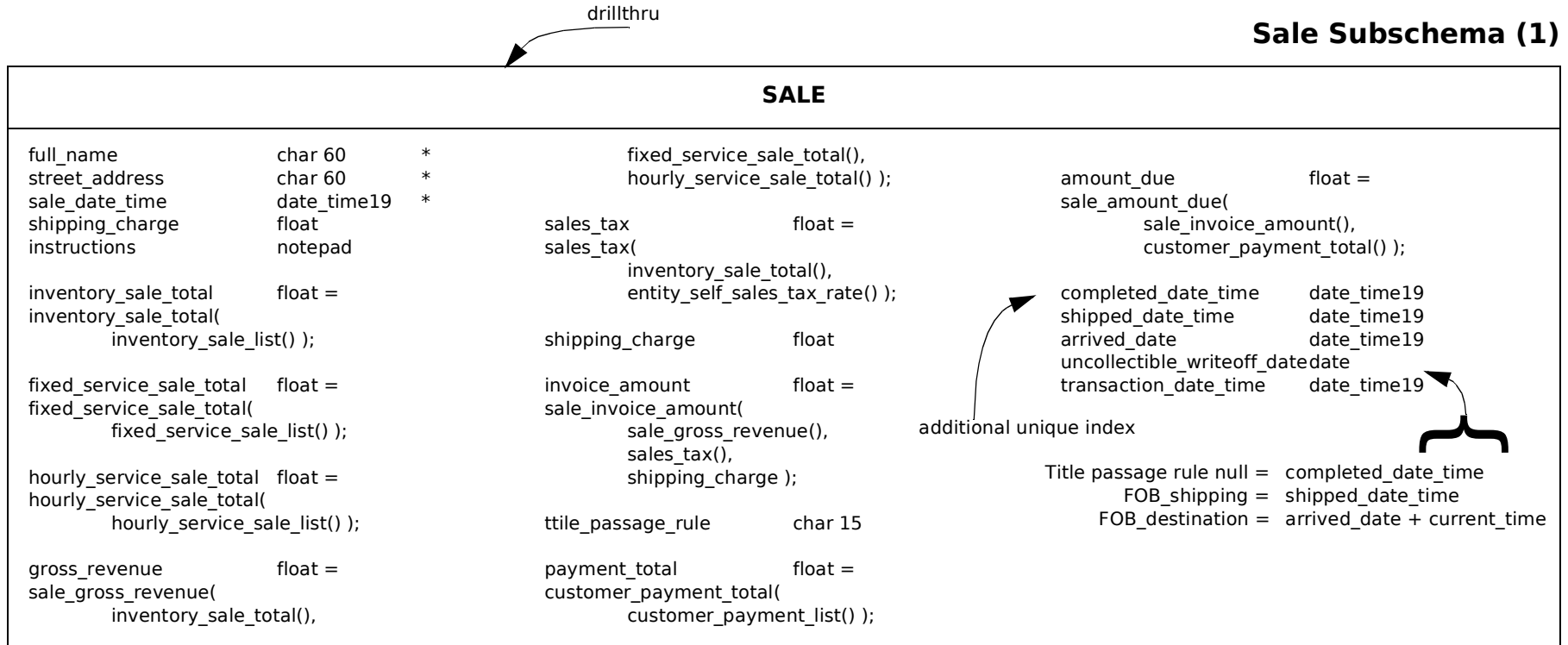


Prepaid Asset Subschema

where account.subclassification = 'prepaid_asset'
or account.subclassification = 'discretionary'

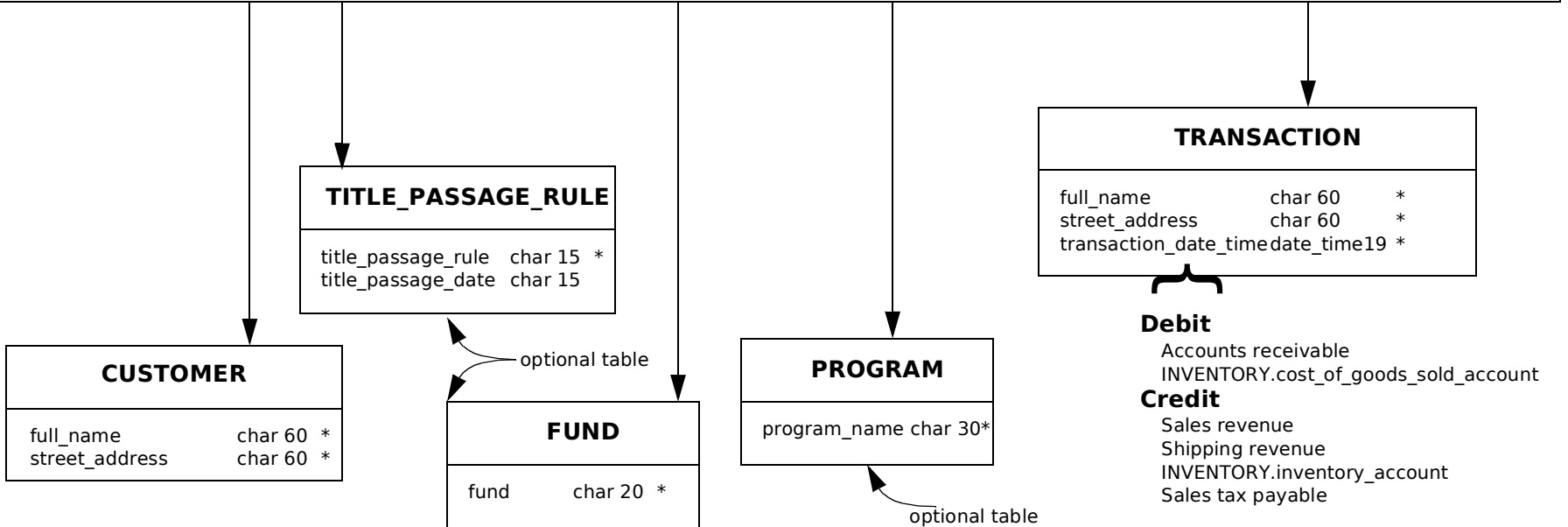


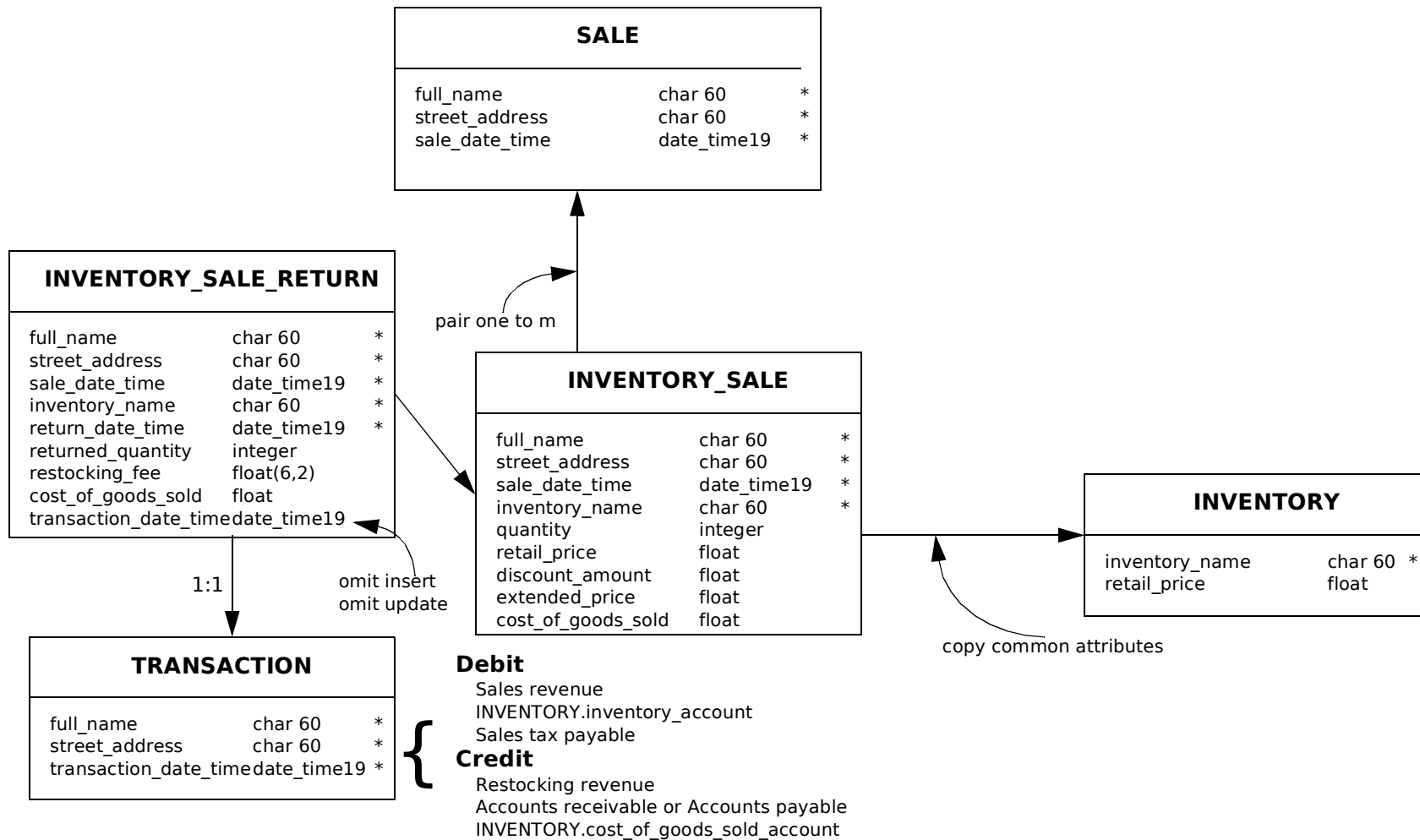
Sale Subschema (1)



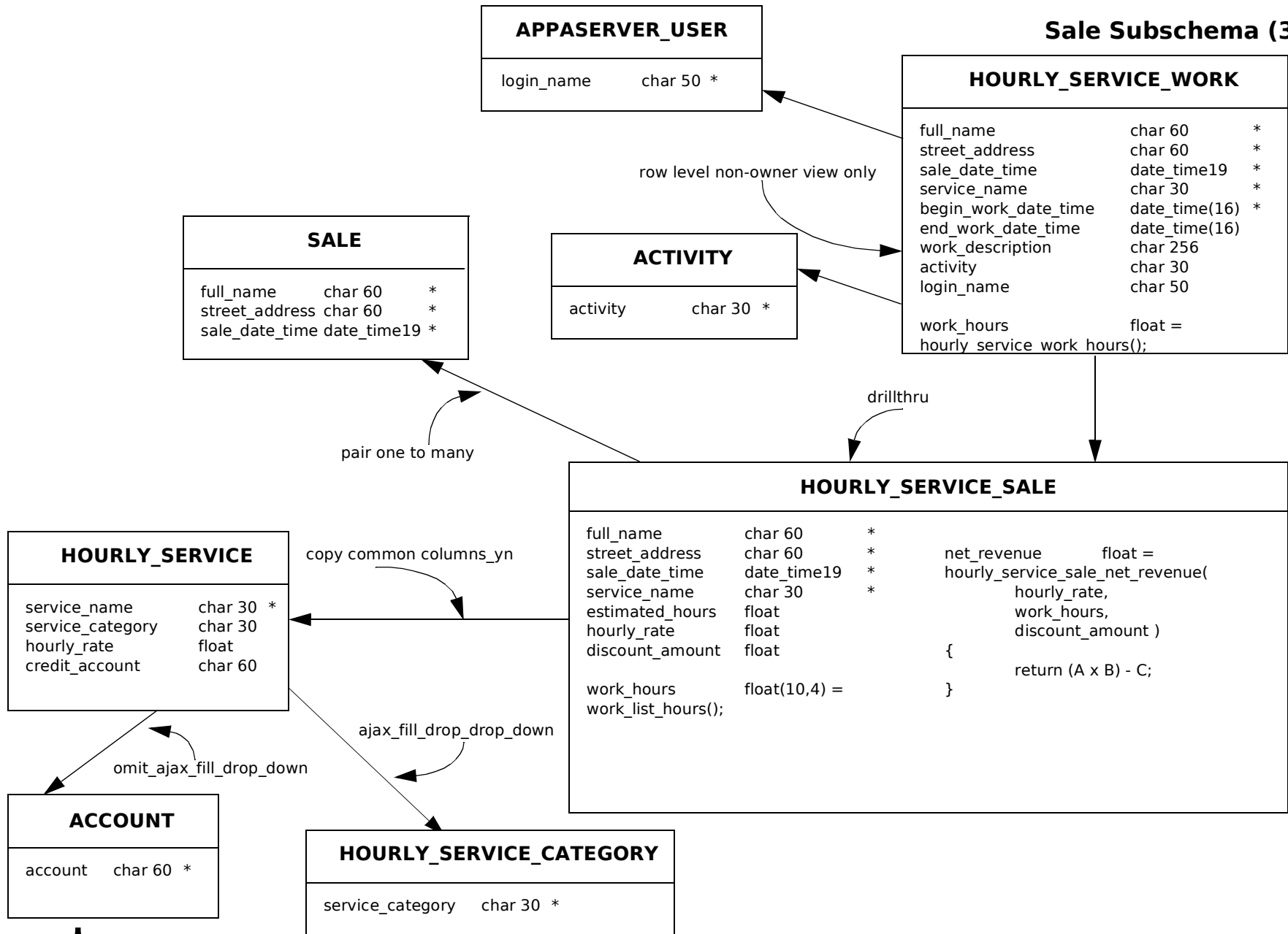
drillthru

additional unique index



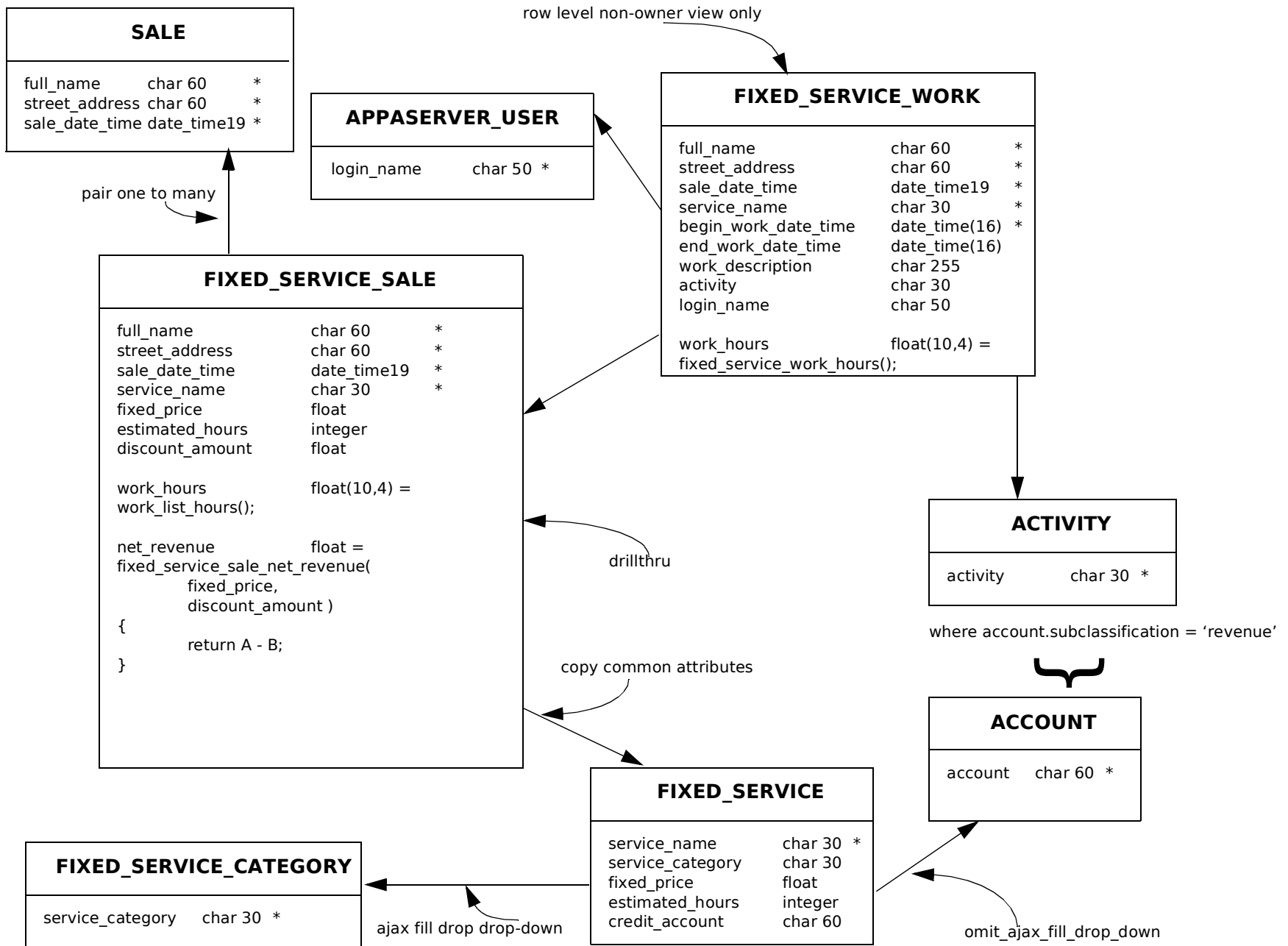


Sale Subschema (3)

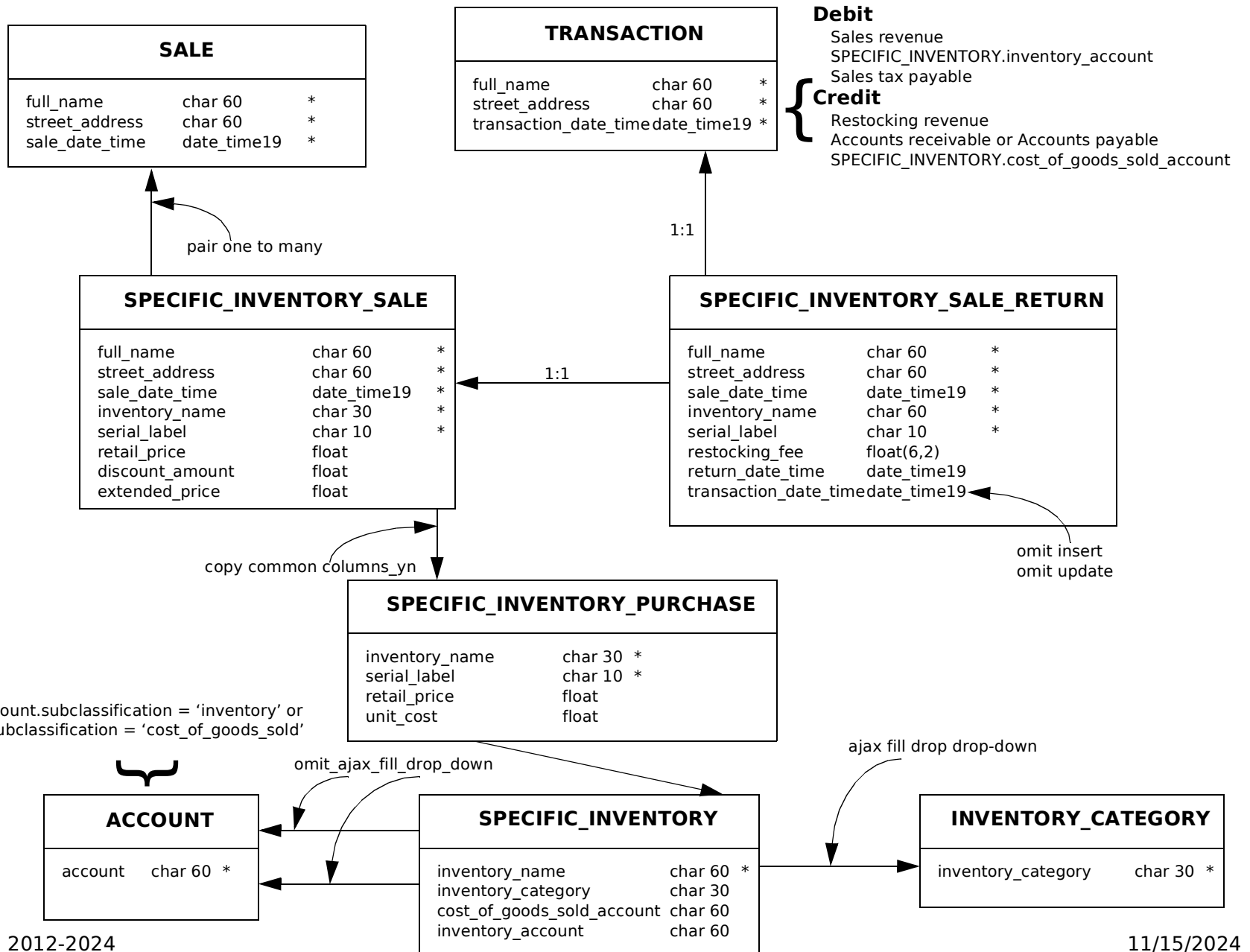


where account.subclassification = 'revenue'

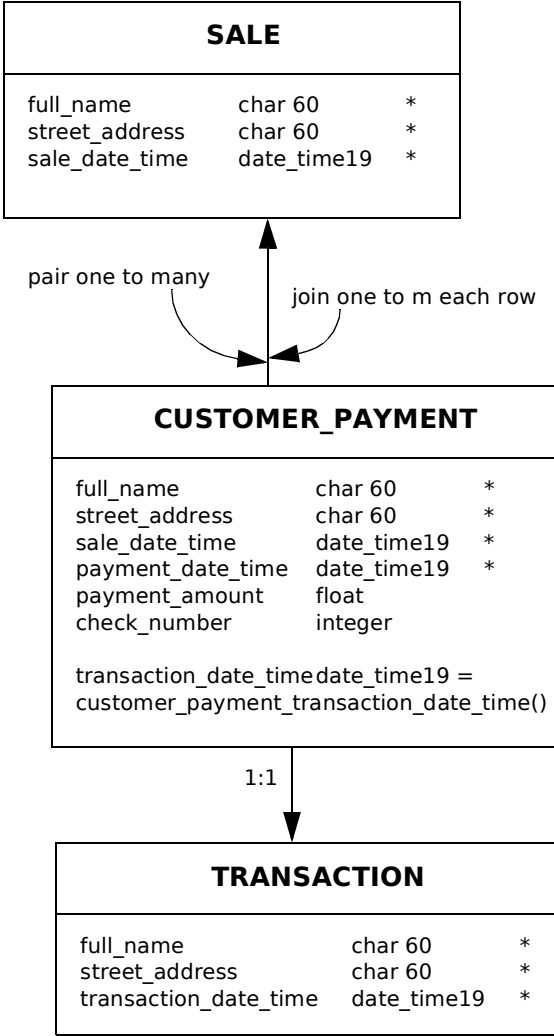
Sale Subschema (4)



Sale Subschema (5)



Customer Payment Subschema



Payroll Subschema

PAYROLL_POSTING		
payroll_year	integer	*
payroll_period_number	integer	*
posting_date_time	date_time19	
begin_work_date	date	
end_work_date	date	
regular_work_hours	float	
overtime_work_hours	float	
commission_sum_extended_price	float	
gross_pay	float	
net_pay	float	
payroll_tax_amount	float	
federal_tax_withholding_amount	float	
state_tax_withholding_amount	float	
social_security_employee_tax_amount	float	
social_security_employer_tax_amount	float	
medicare_employee_tax_amount	float	
medicare_employer_tax_amount	float	
retirement_contribution_plan_employee_amount	integer	
retirement_contribution_plan_employer_amount	integer	
health_insurance_employee_amount	integer	
health_insurance_employer_amount	integer	
federal_unemployment_tax_amount	float	
state_unemployment_tax_amount	float	
union_dues_amount	integer	

EMPLOYEE_WORK_PERIOD		
full_name	char 60	*
street_address	char 60	*
payroll_year	integer	*
payroll_period_number	integer	*
begin_work_date	date	
end_work_date	date	
regular_work_hours	float	
overtime_work_hours	float	
commission_sum_extended_price	float	
gross_pay	float	
net_pay	float	
payroll_tax_amount	float	
federal_tax_withholding_amount	float	
state_tax_withholding_amount	float	
social_security_employee_tax_amount	float	
social_security_employer_tax_amount	float	
medicare_employee_tax_amount	float	
medicare_employer_tax_amount	float	
retirement_contribution_plan_employee_amount	integer	
retirement_contribution_plan_employer_amount	integer	
health_insurance_employee_amount	integer	
health_insurance_employer_amount	integer	
federal_unemployment_tax_amount	float	
state_unemployment_tax_amount	float	
union_dues_amount	integer	
transaction_date_time	date_time19	

EMPLOYEE		
full_name	char 60	*
street_address	char 40	*

EMPLOYEE_WORK_DAY		
full_name	char 60	*
street_address	char 60	*
begin_work_date_time	current_date_time16	*
end_work_date_time	date_time16	
employee_work_hours	float	
overtime_work_day_yn	char 1	

TRANSACTION		
full_name	char 60	*
street_address	char 60	*
transaction_date_time	date_time19	*

omit insert
omit update
omit delete

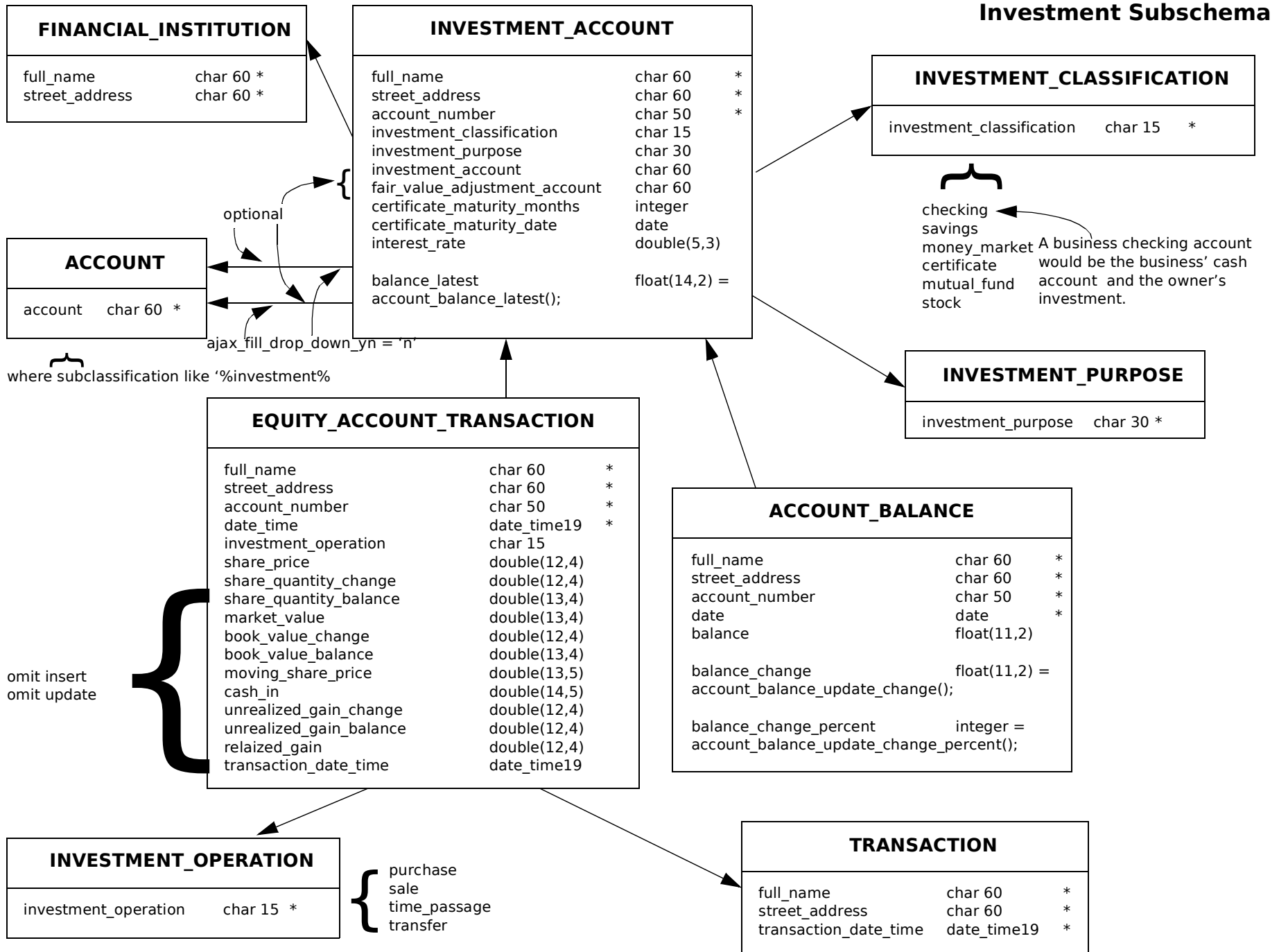
omit insert
omit update }

1:1

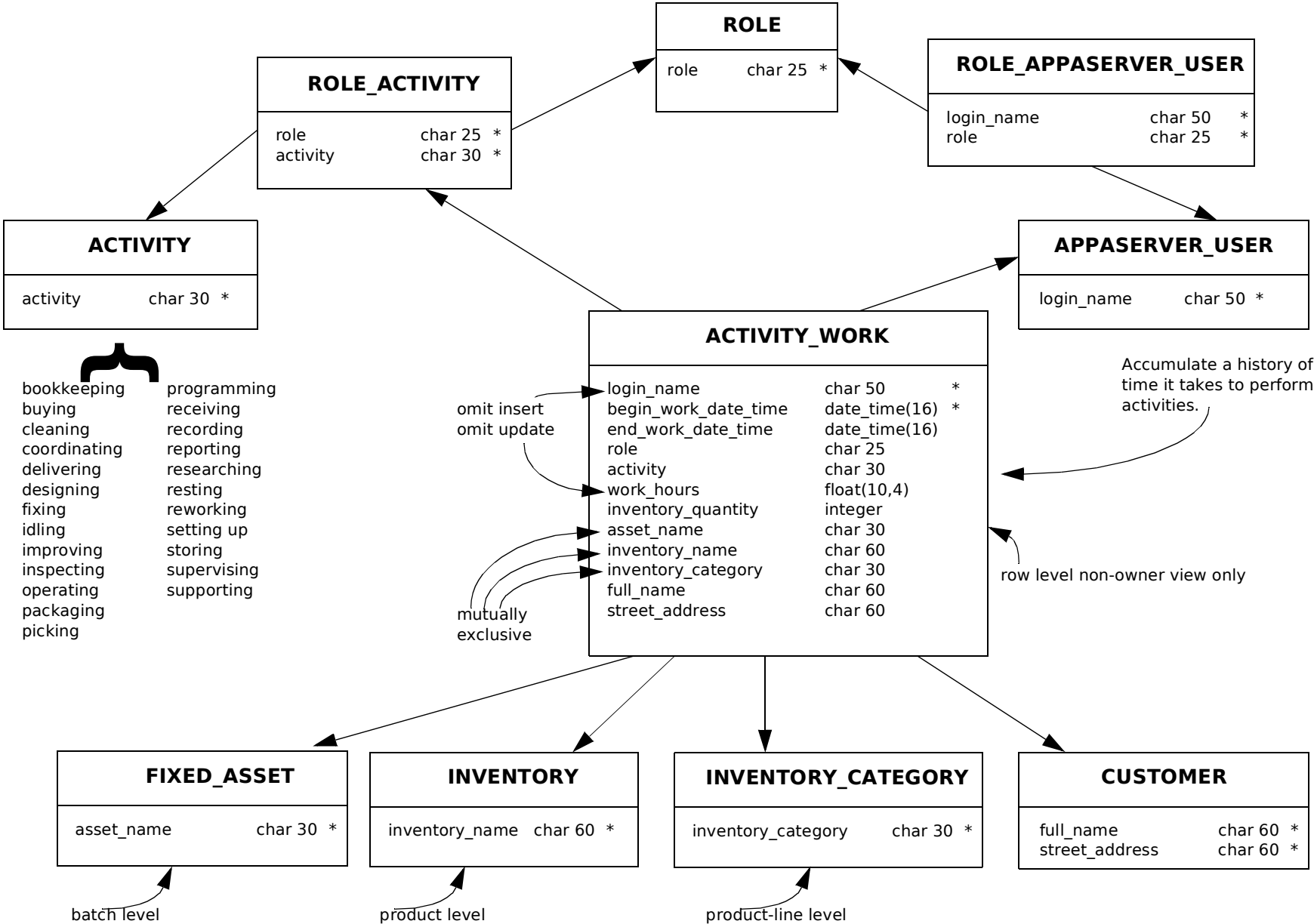
row level non-owner forbid

omit insert

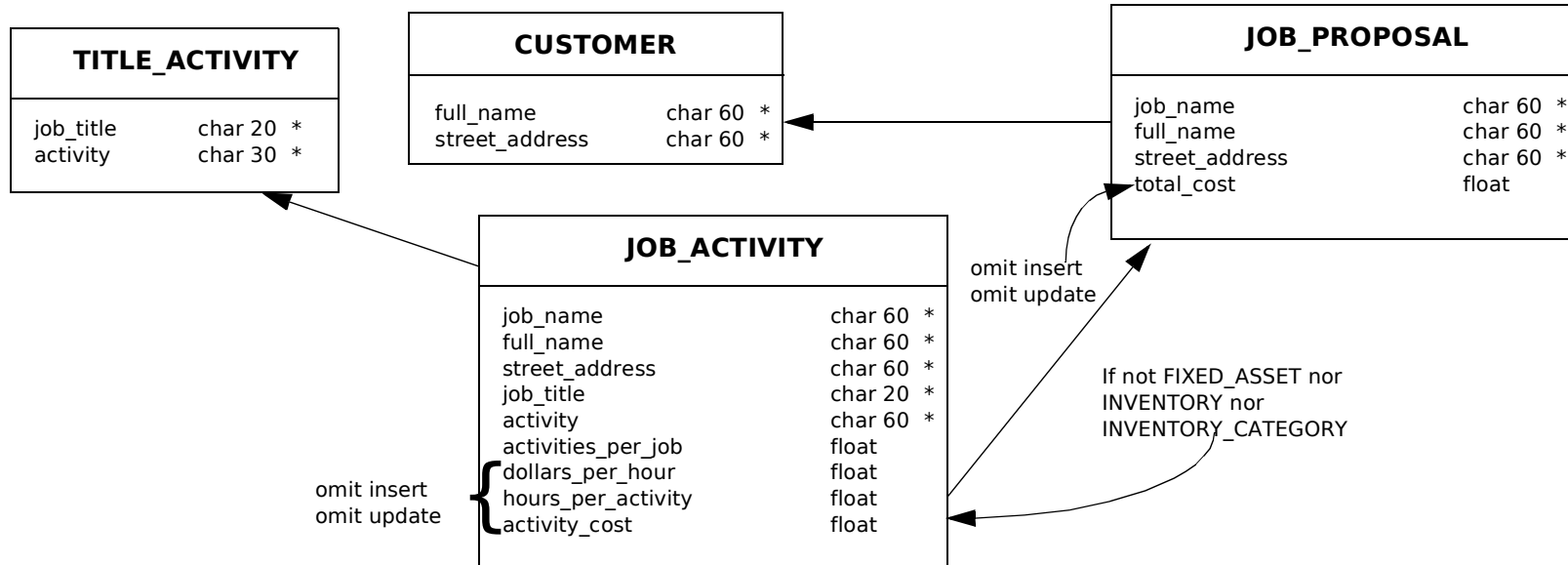
omit insert
omit update }



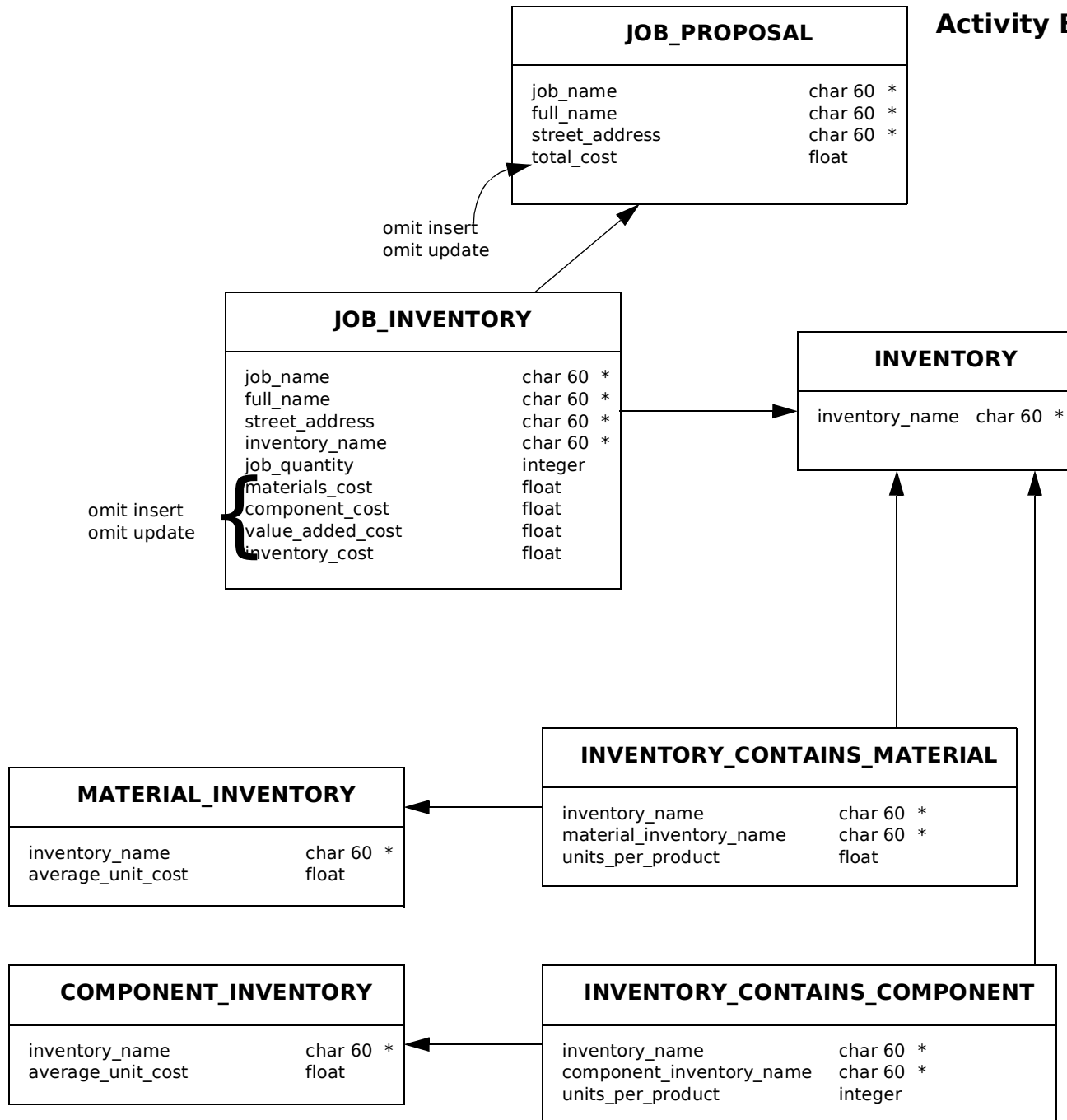
Activity Based Costs Subschema (1)



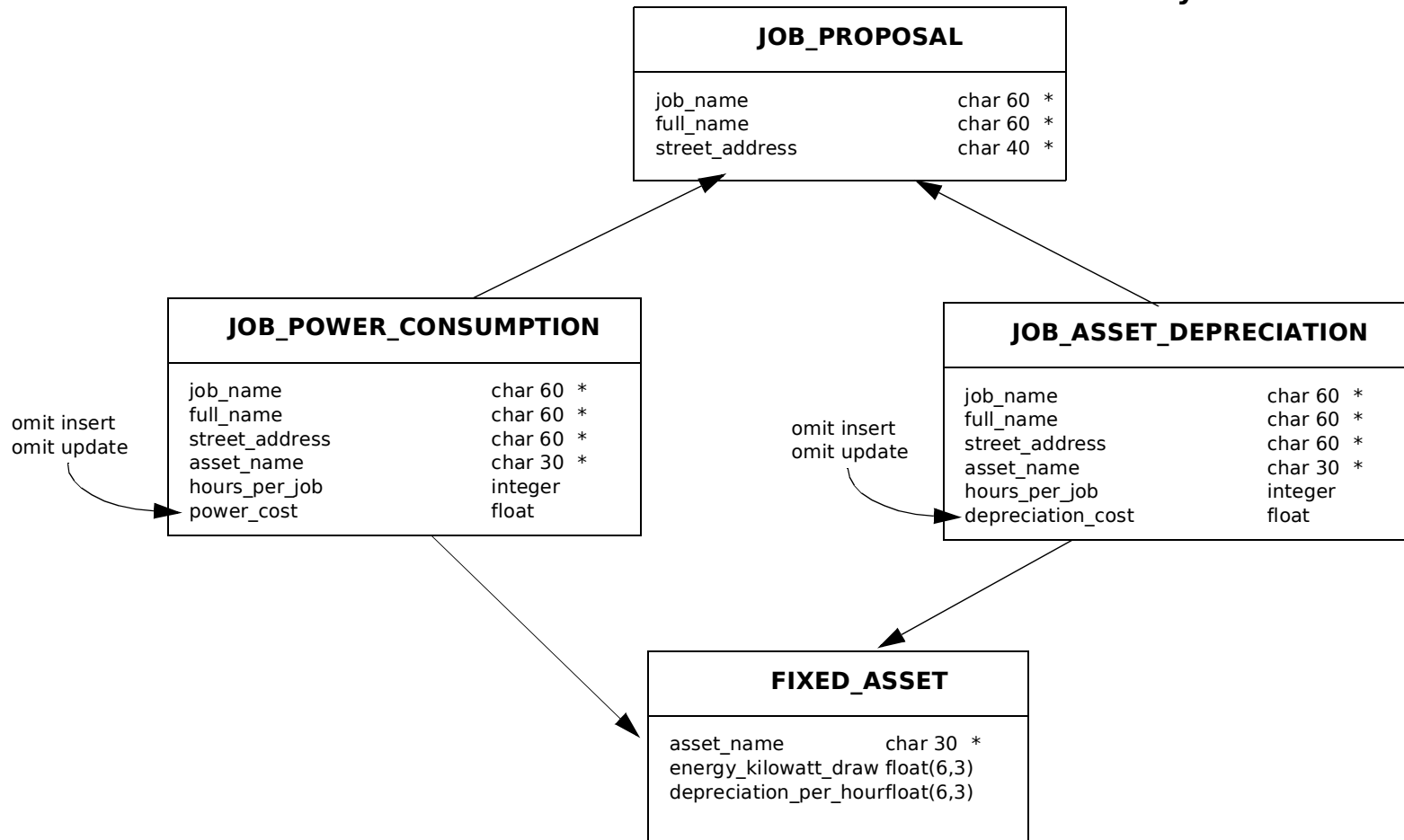
Activity Based Costs Subschema (2)



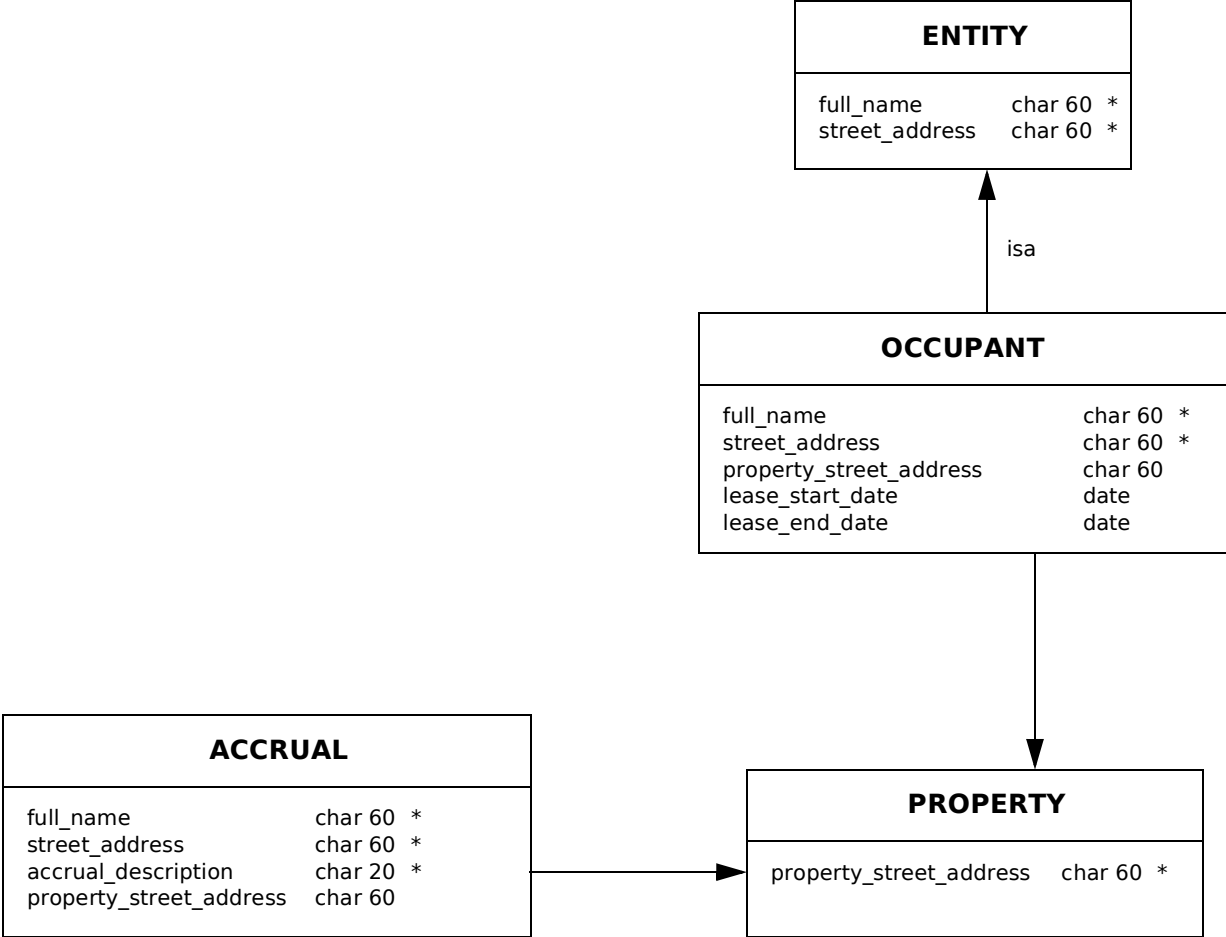
Activity Based Costs Subschema (3)



Activity Based Costs Subschema (4)



Rental Property Subschema



Spreadsheet Subschema

