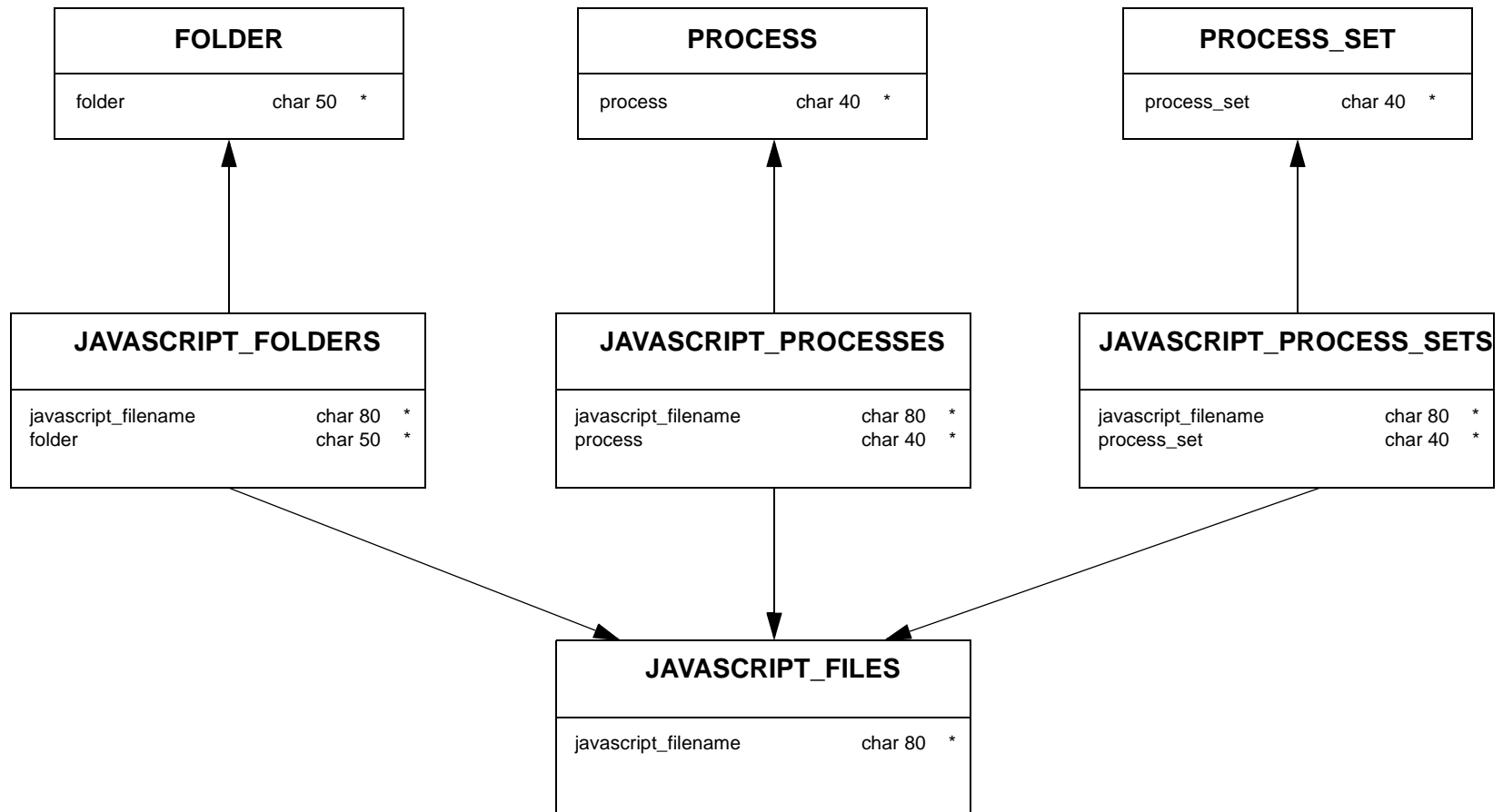
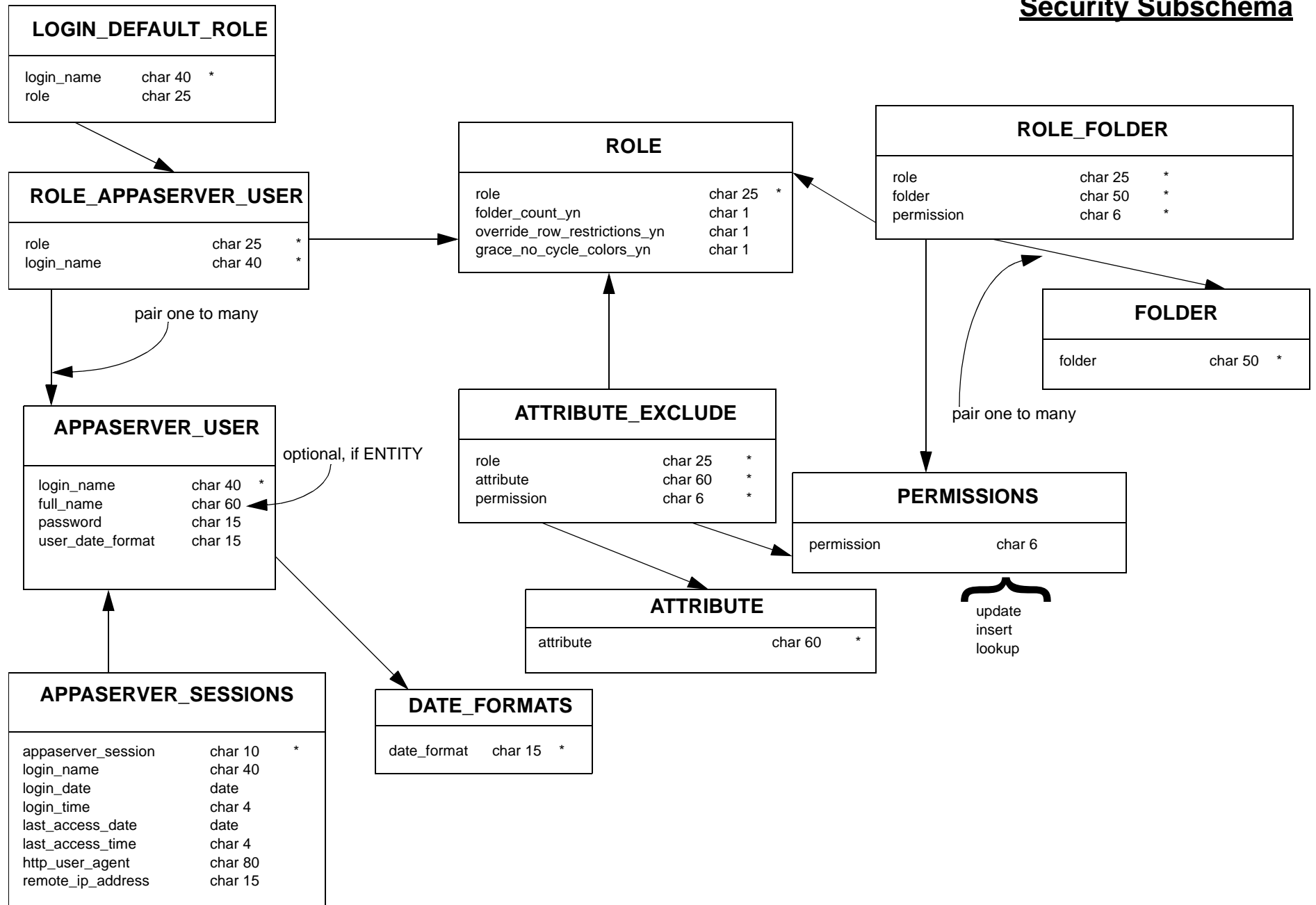


Javascript Subschema

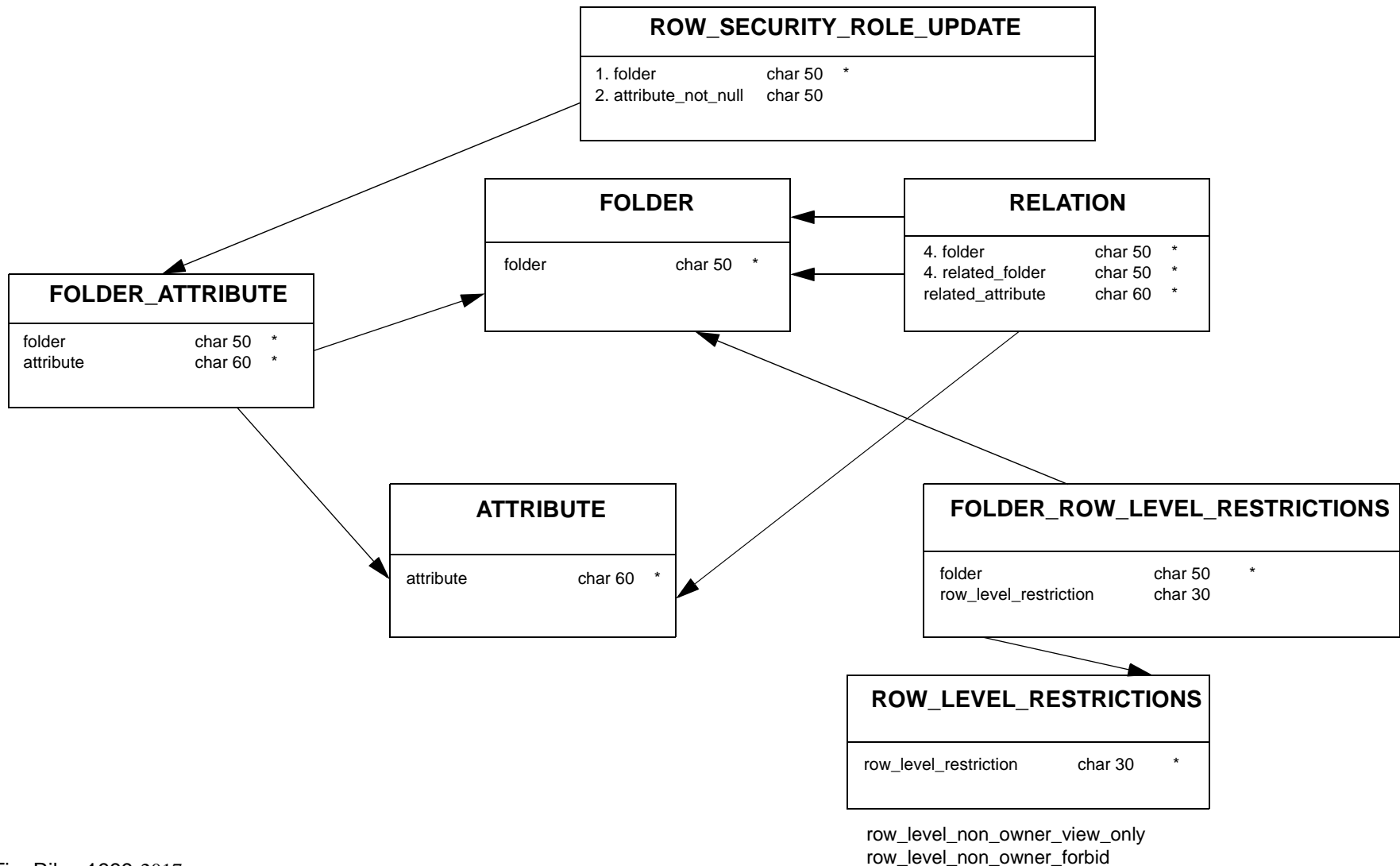


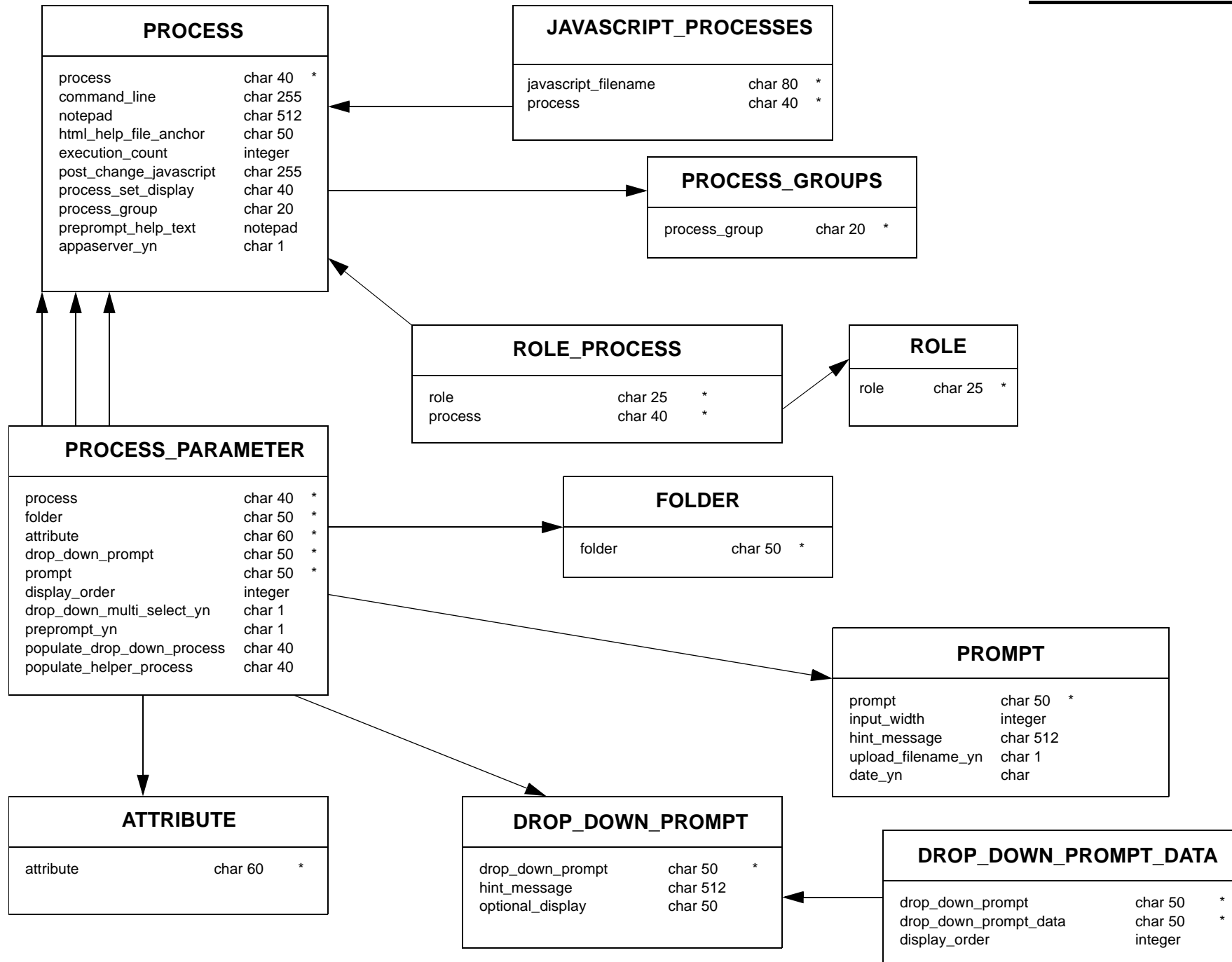
Security Subschema



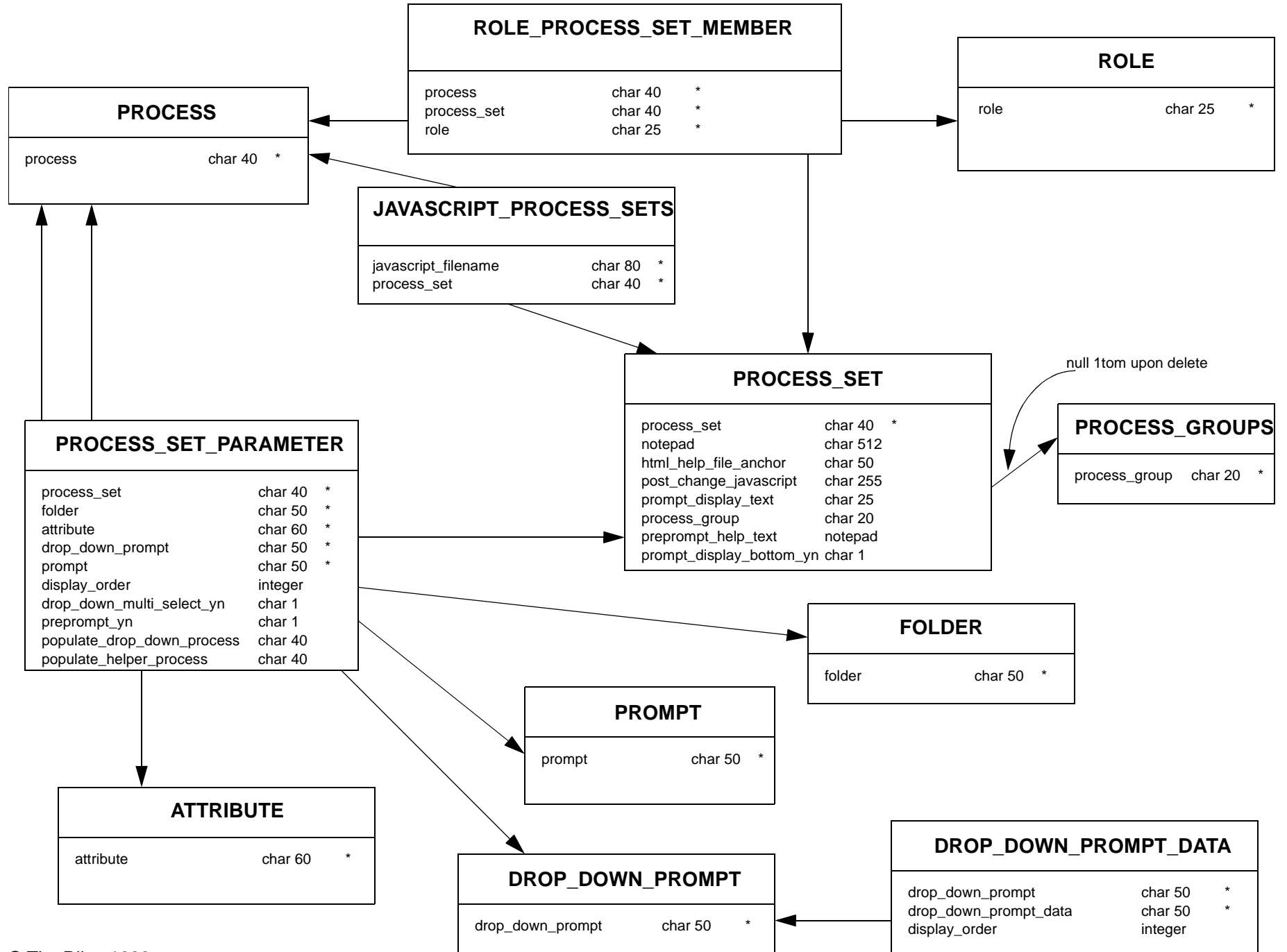
Security Subschema

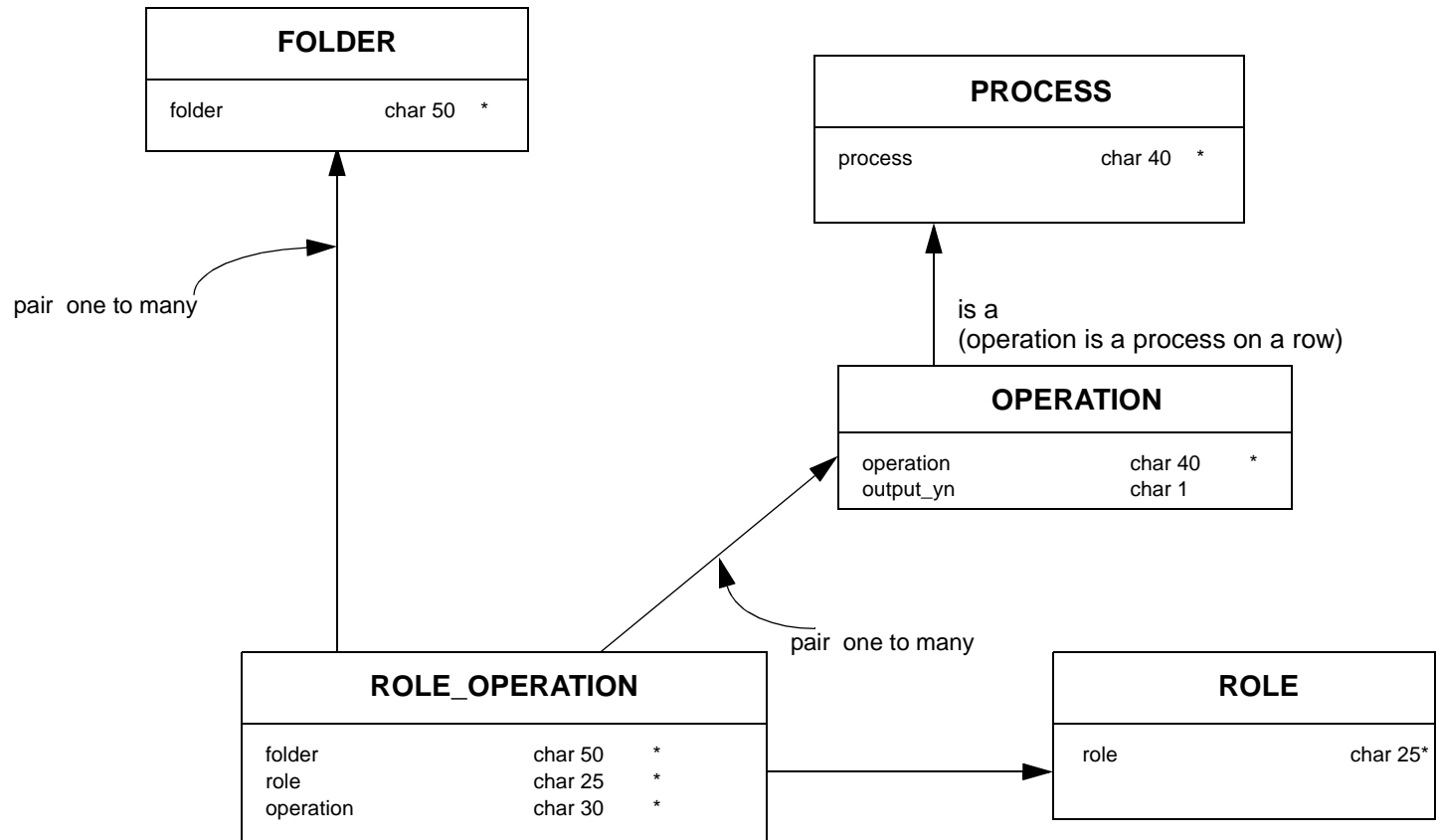
1. For every row in a participating folder ...
2. If attribute_not_null is not null, then ...
3. Only allow ROLE.override_row_restrictions_yn update permissions. All other roles get view-only.
4. View-only permissions also for all rows in recursive 1:m related folders.
See hydrology: MEASUREMENT <-- MEASUREMENT_BACKUP.



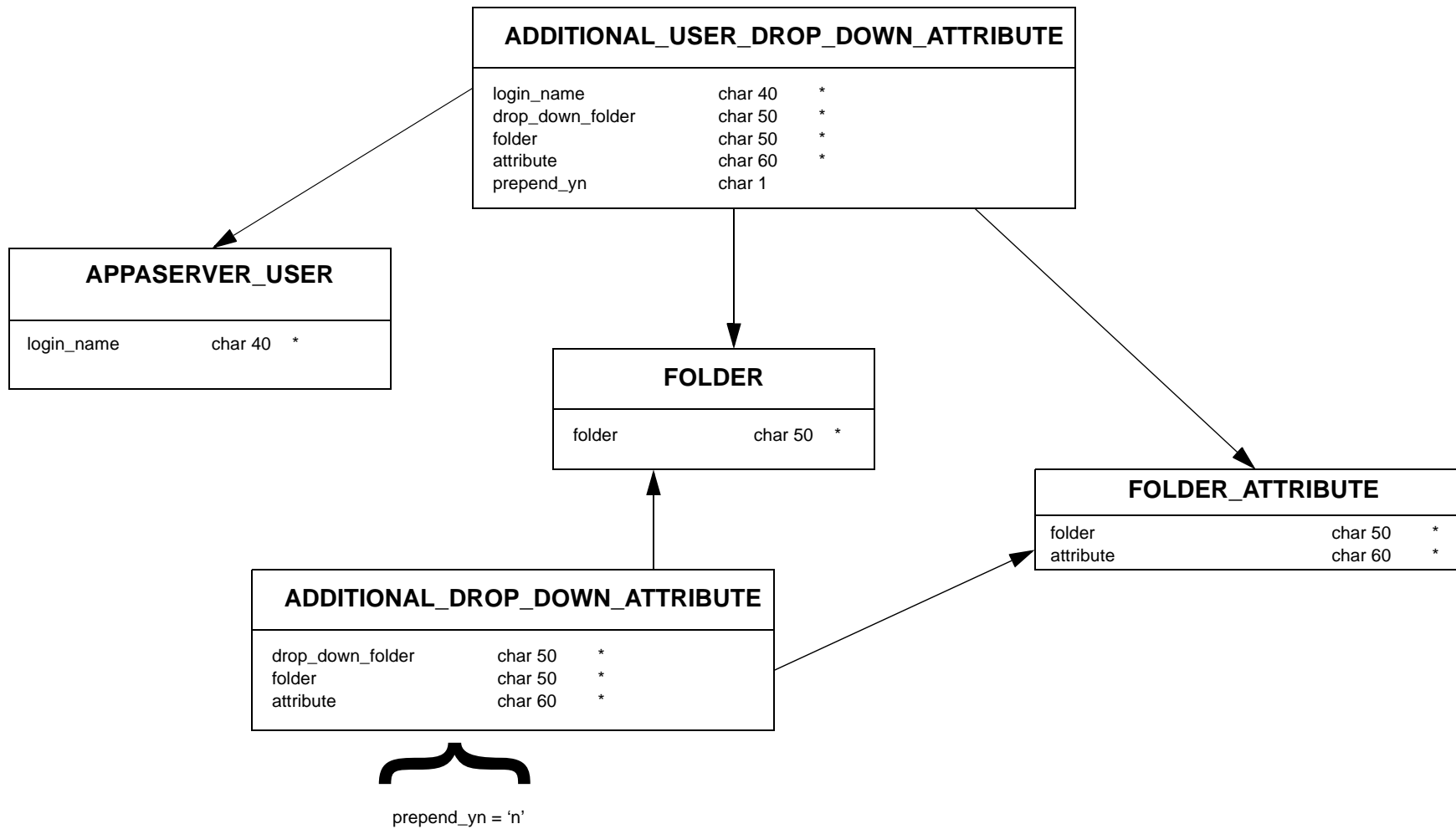


Process Set Subschema





Additional Drop Down Attribute Subschema



Process Generic Output Subschema

