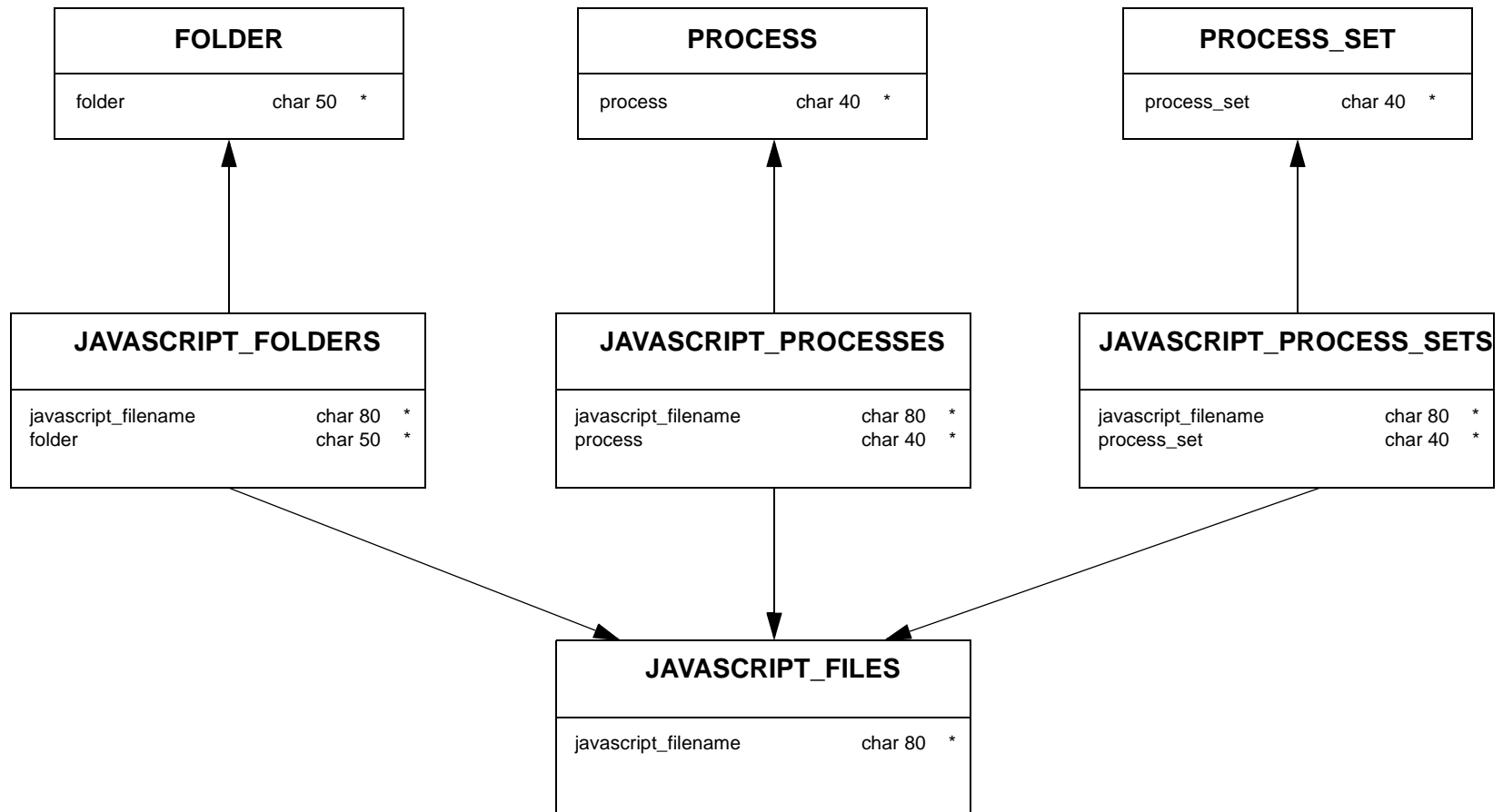
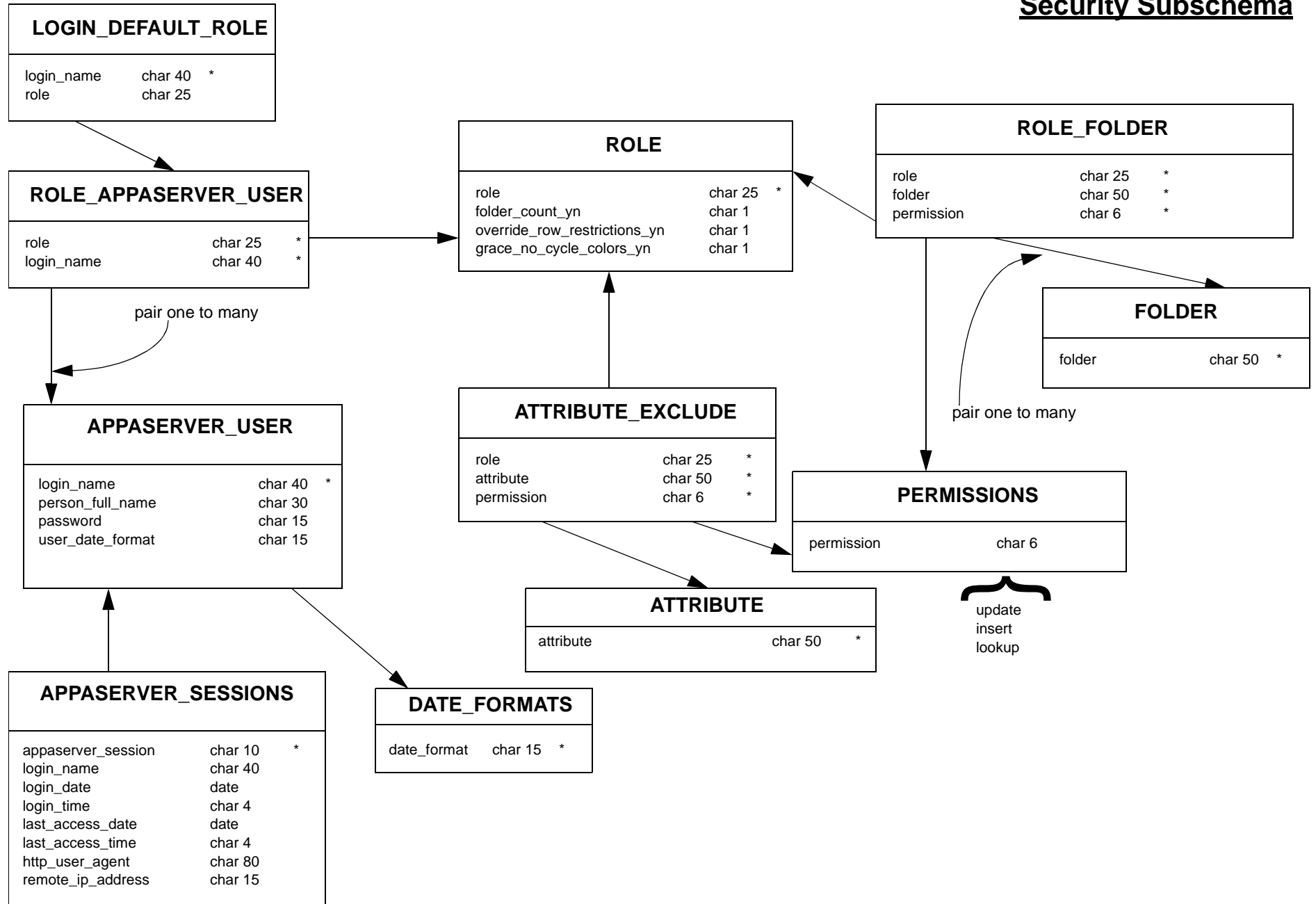


## Javascript Subschema

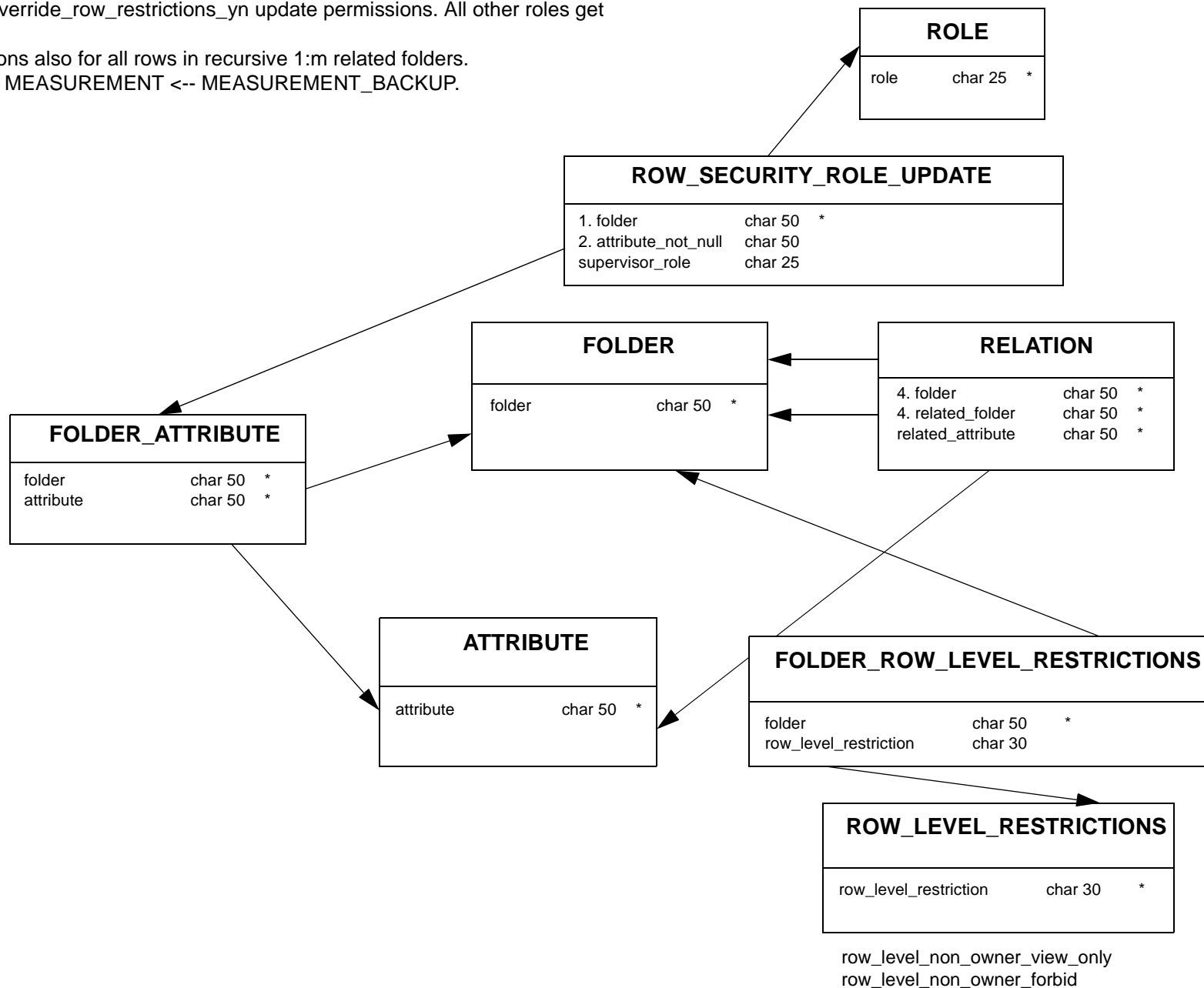


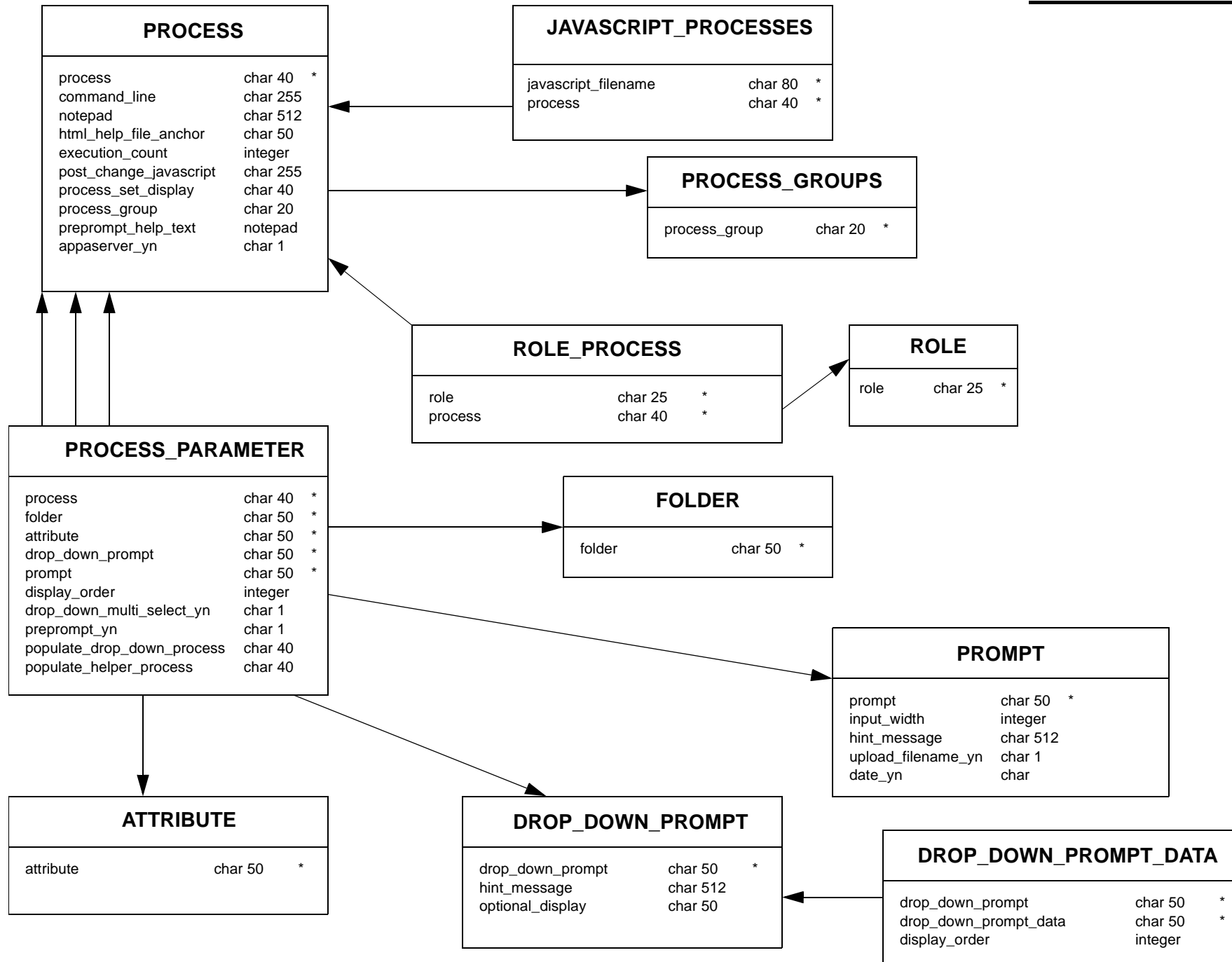
## Security Subschema



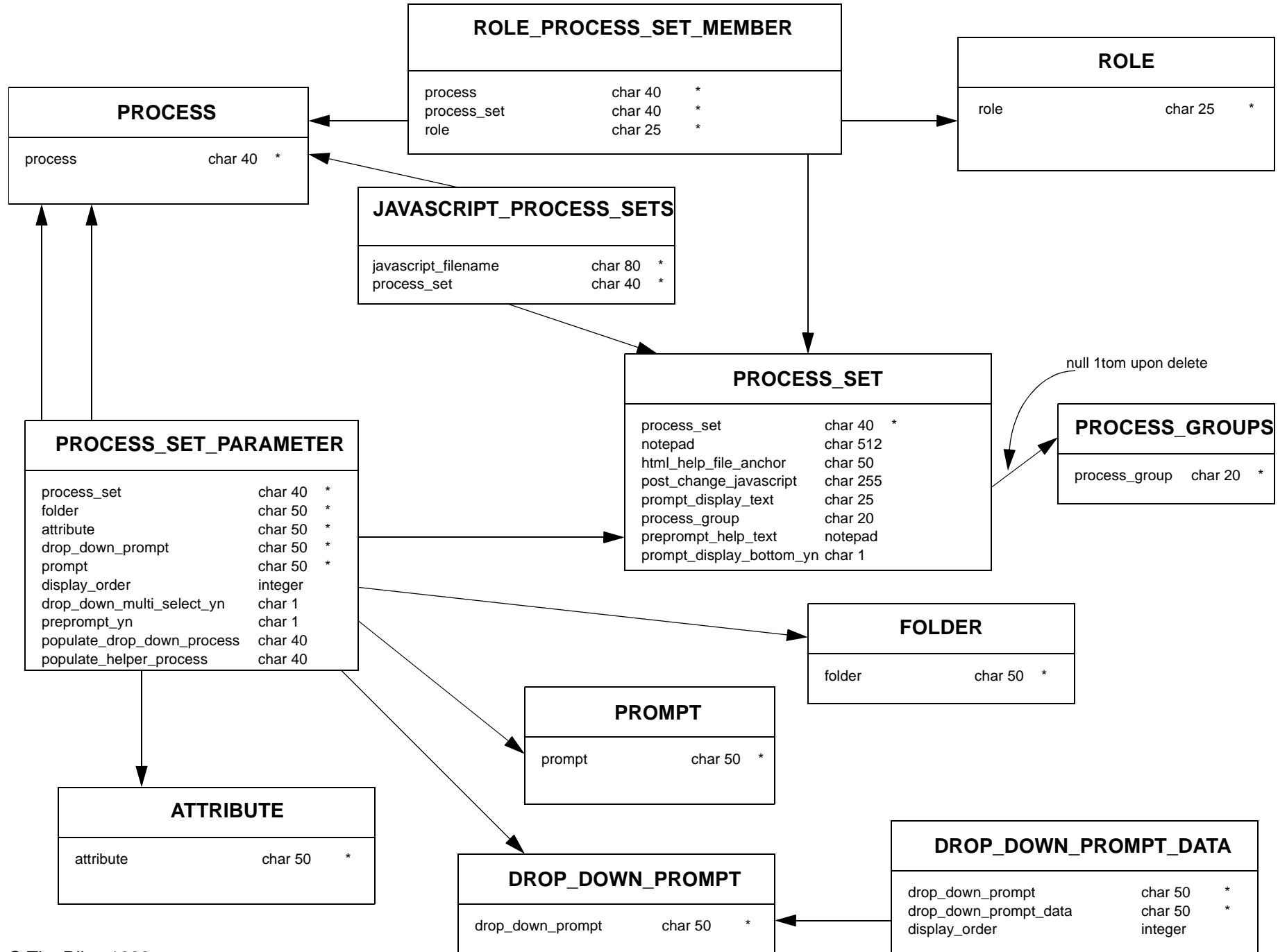
## Security Subschema

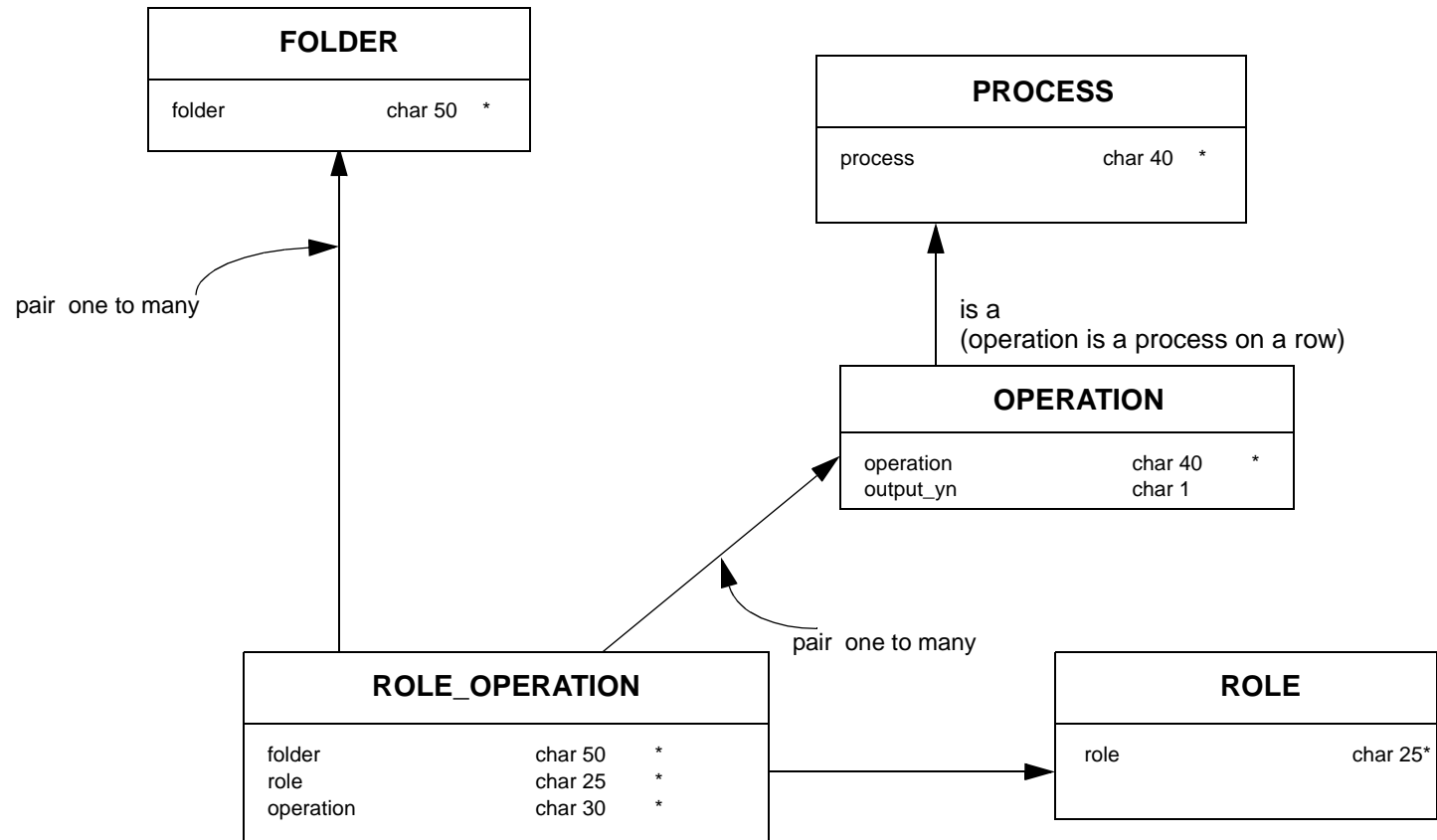
1. For every row in a participating folder ...
2. If attribute\_not\_null is not null, then ...
3. Only allow ROLE.override\_row\_restrictions\_yn update permissions. All other roles get view-only.
4. View-only permissions also for all rows in recursive 1:m related folders.  
See hydrology: MEASUREMENT <-- MEASUREMENT\_BACKUP.





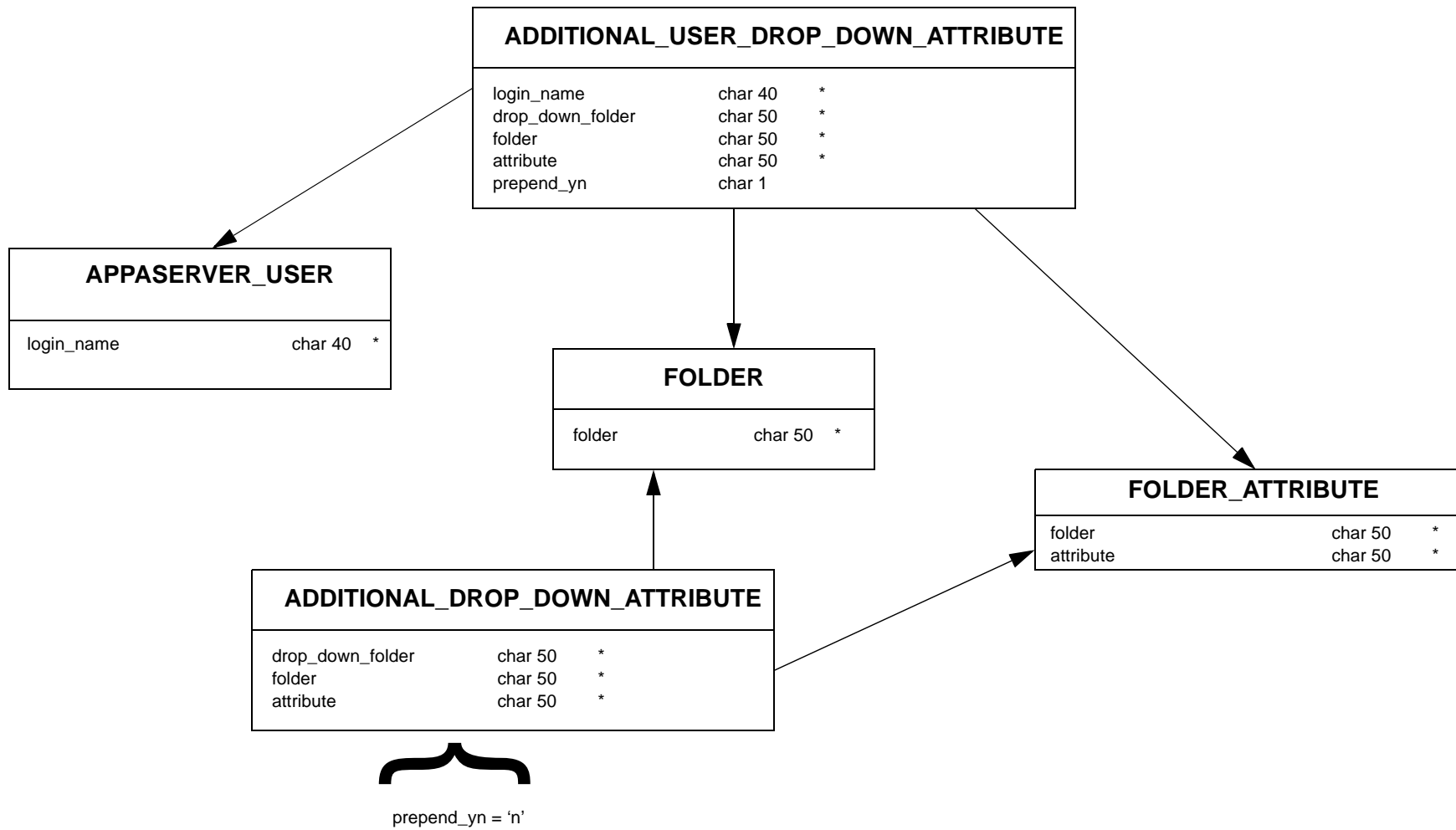
Process Set Subschema







## Additional Drop Down Attribute Subschema



**Process Generic Output Subschema**

